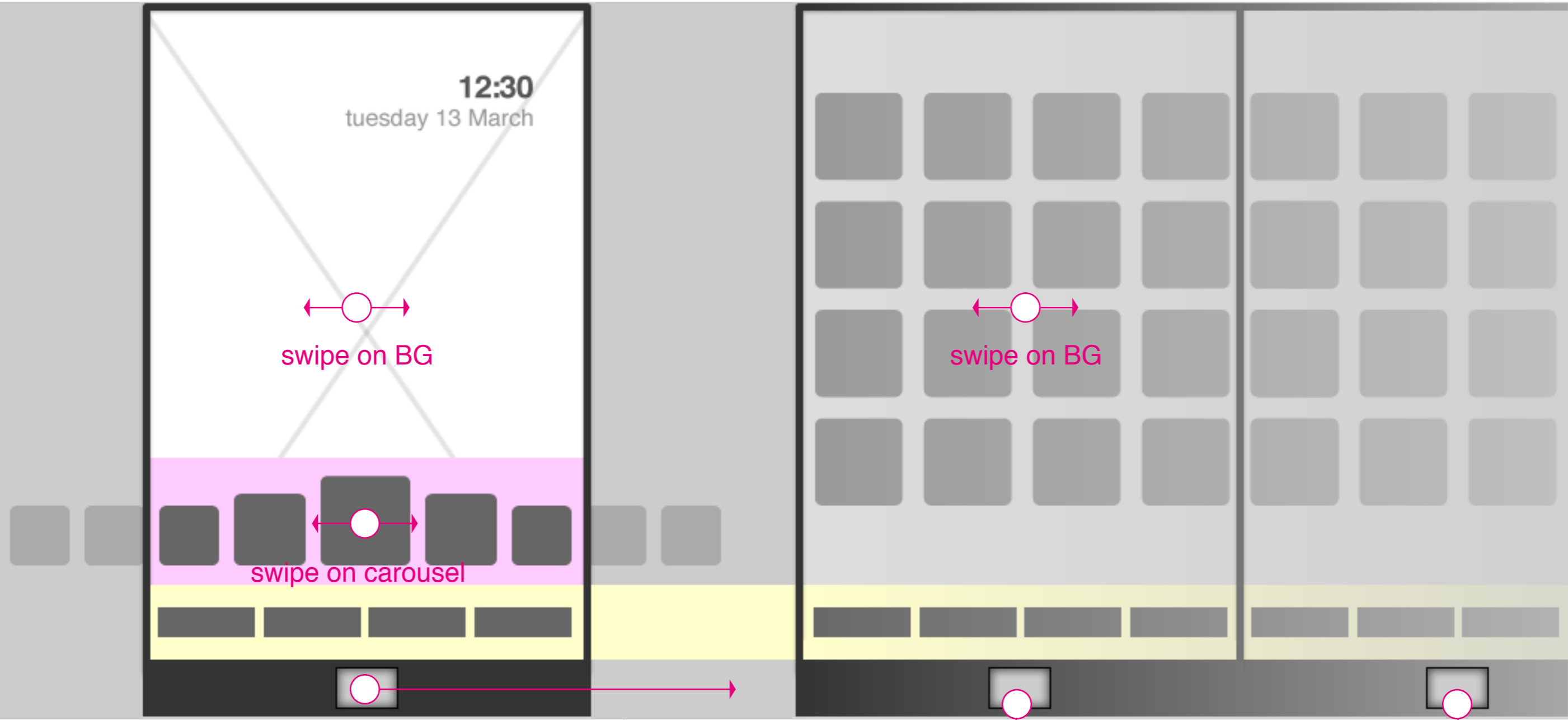


# Home: TF Carousel component

# Home screen

## Horizontal carousel with dock



**Home**  
The hardware home button toggles to the first page of the application grid

**App launcher**  
The hardware home button toggles to the Home screen.

# Home screen

## Carousel: application types and appearance



### Homescreen: carousel

Whenever an app is in middle state, an interactive title tool tip will appear after 3/4 seconds

### Carousel apps

The carousel will be pre-loaded with five key applications, all providing an elaborated and beneficial preview for the user. Suggested pre-loaded Telefonica apps are: Email, Calendar and Browser.

Pre-loaded special partner apps are “.....” and “.....”. With the possibility of having a total of 9 applications in the carousel, the user will have four empty slots before starting carousel customization. Customizing the carousel, the user can add any of the four application types (presented on previous page), although 3rd party applications might not be the ones that utilizing the preview to the fullest.

The pre-loaded apps should not interfere with the purpose of the four apps in the bottom dock, they should work alongside them.

## Carousel: Time out to activate title tool tip



### Homescreen: carousel unfocused

Whenever an app is in middle state, an interactive title tool tip will appear after 3/4 seconds



### Homescreen: carousel focused

With the title tool tip visible, the user can tap it (and swipe it upwards) in order to view the preview state of the app.

## Description

### Unfocused carousel:

Tap any app icon to open it in full app mode.

### Focused carousel:

Title tool tip remains visible until user scrolls carousel.

Tap any application in carousel to open it in full app mode.

Swipe upwards or tap tooltip to reveal preview.

**Note** that whenever a carousel application doesn't have a preview, its tooltip title will have a different texture in order to indicate that it cannot be tapped/swiped.

# Home screen

## Carousel: navigation



Homescreen: carousel

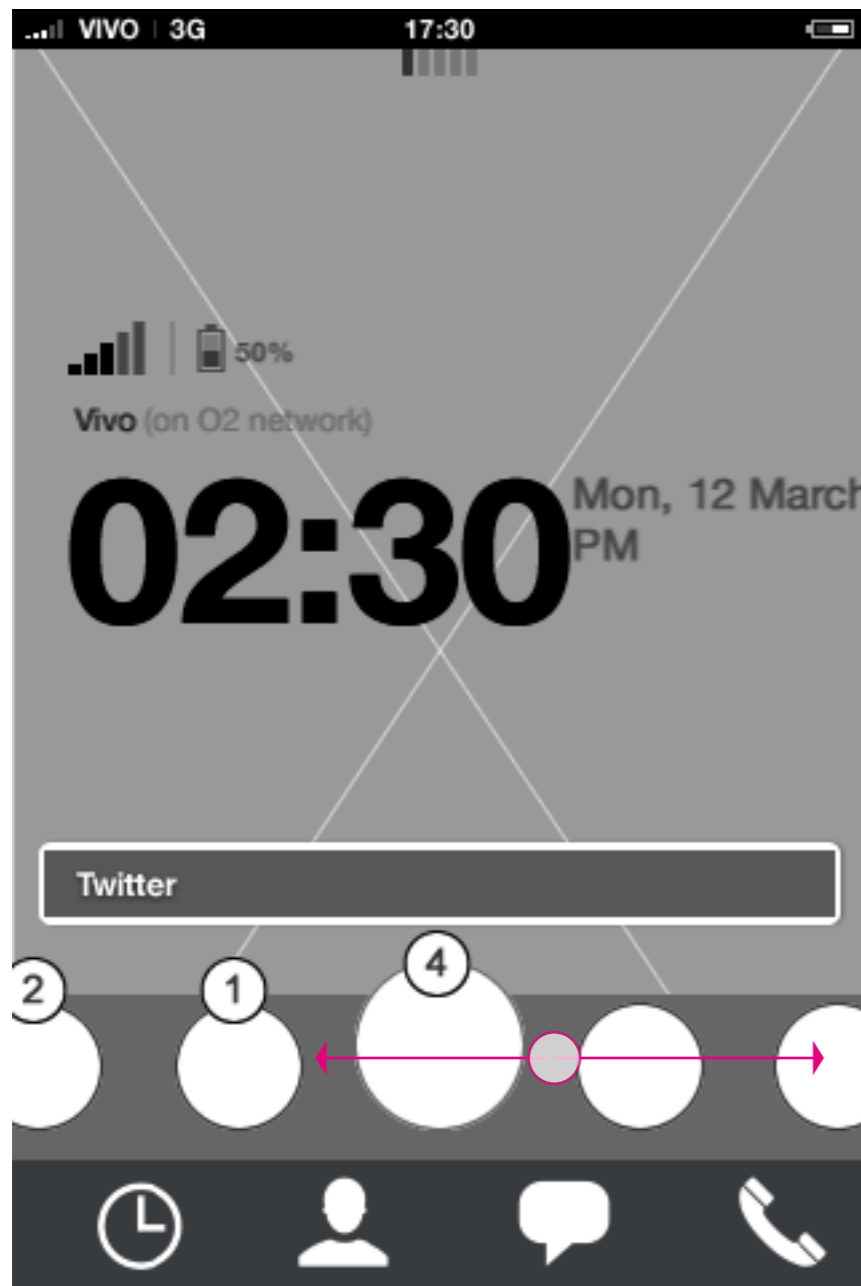
## Carousel

The carousel persists, which means that whatever horizontal position it had, it will remain next time the user access home. The tooltip title will however appear first after 3/4 seconds.

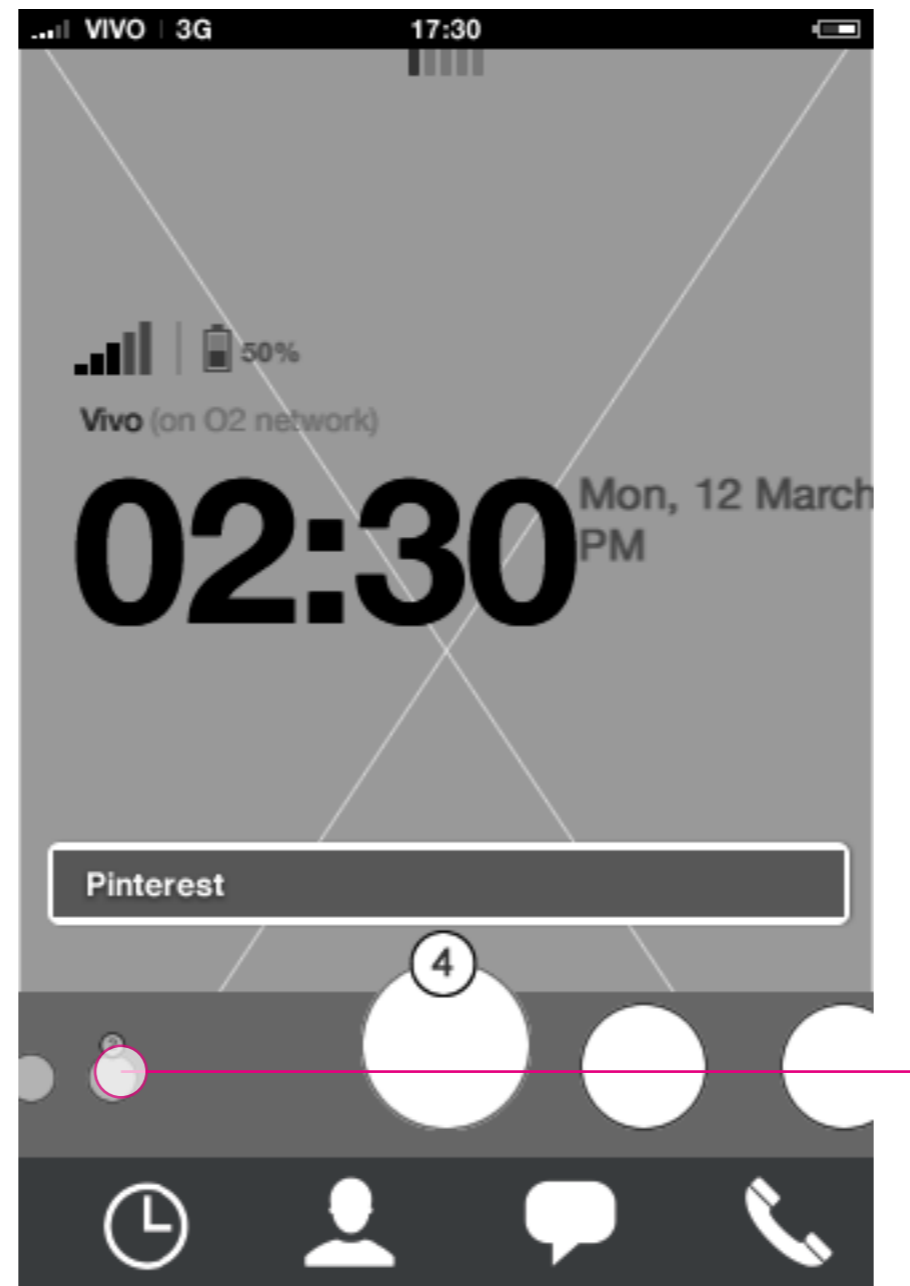
The carousel doesn't wrap. This means that scrolling horizontally to the very left or right end will put the last carousel item in the middle position. When reaching the very end of the carousel, it will bounce providing affordance that end has been reached.

# Home screen

## Carousel: Reaching carousel end



**Homescreen: carousel scroll**  
User can scroll horizontally in carousel

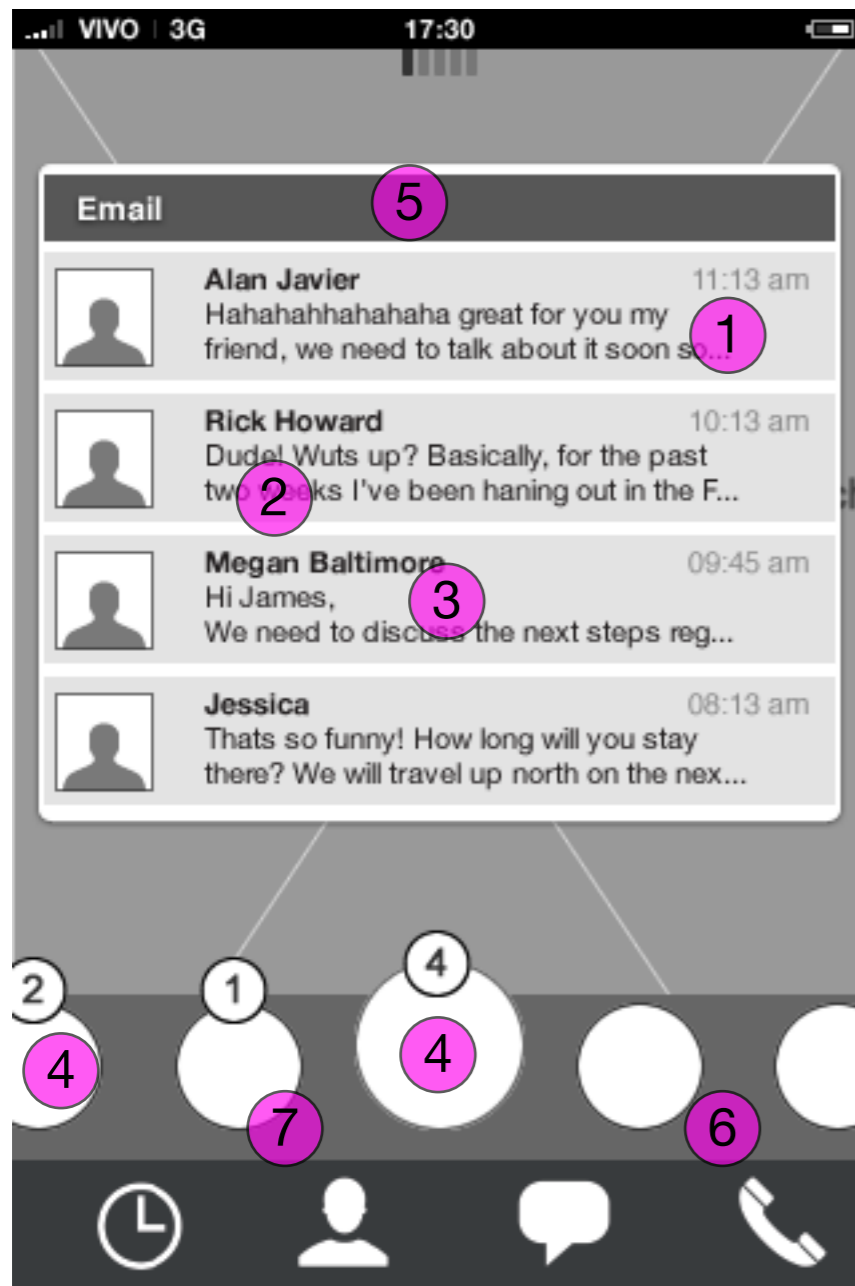


**Homescreen: carousel scroll**  
When reaching the end of the carousel it bounces to give end-of-carousel affordance. In the very end of the carousel the far right side will appear as “far away”. Tapping that area, the user will snap to the very far right side of the carousel



**Homescreen: carousel scroll**  
When reaching the very far right side of the carousel, the user can snap back in the same way to the very far left.

# Home screen Preview



Homescreen: Carousel open

## Preview

When preview is open the following actions can take place:

1. Swipe horizontally on preview bubble: Moves focus to next/previous preview with focused carousel app in the middle.
2. Tap preview content: Opens full app with selected content.
3. Scroll preview downwards: Close preview. (Scrolling upwards holds no action, hence the preview should gently bounce upwards giving this affordance).
4. Tap (other) app icon: opens full app.
5. Tap title: close preview
6. Swipe horizontally on carousel: closes preview.
7. Long press anywhere on carousel: Enters edit mode.

Note that the size of the preview is fixed and the content is not scrollable. This means that content needs to adapt to the size of the preview.

# Home screen

## Carousel: Open animation



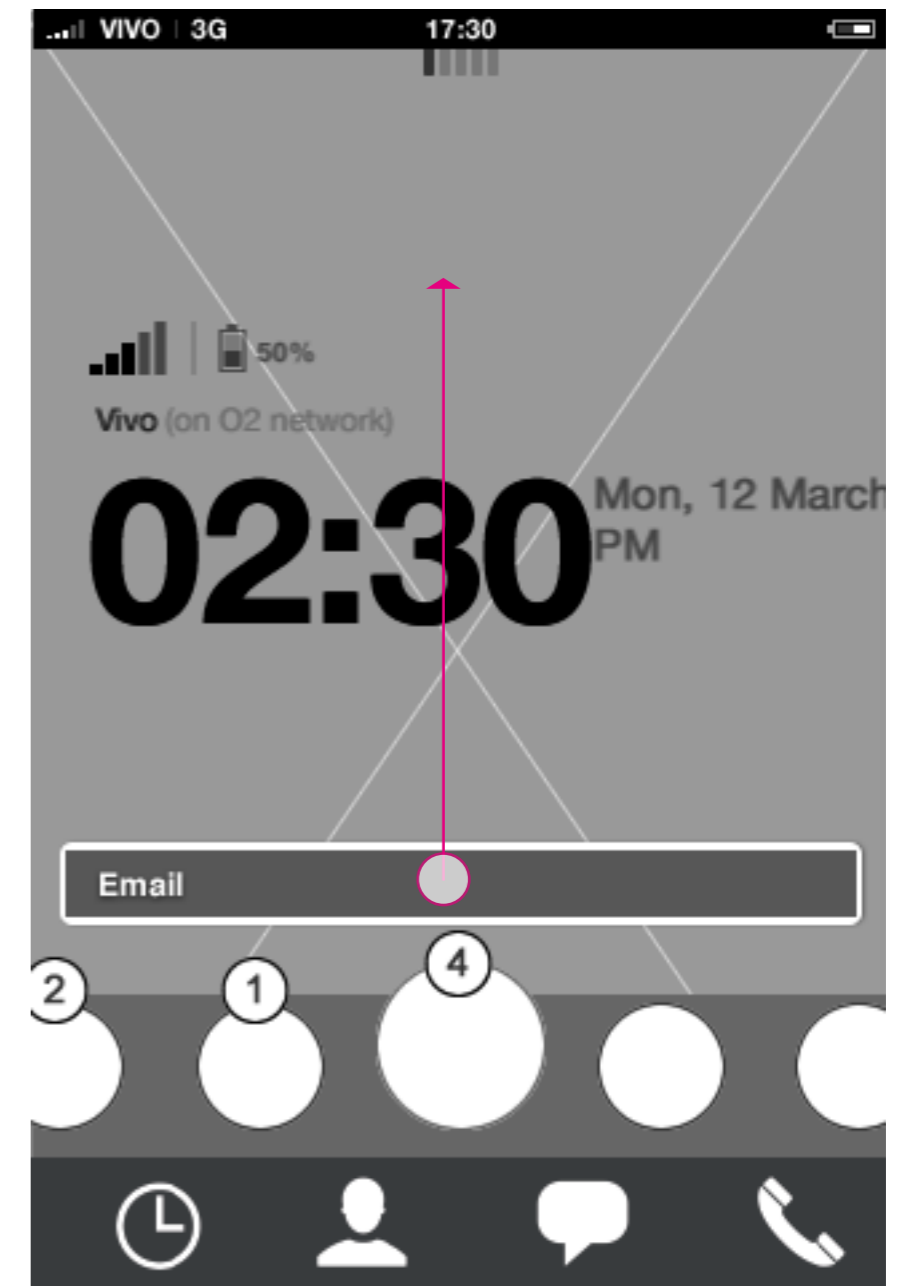
### Homescreen: unfocused carousel

The user can scroll horizontally to put an application in focus.



### Homescreen: carousel animation

When an application is in middle focus, a title tooltip will animate in after 3/4 sec.



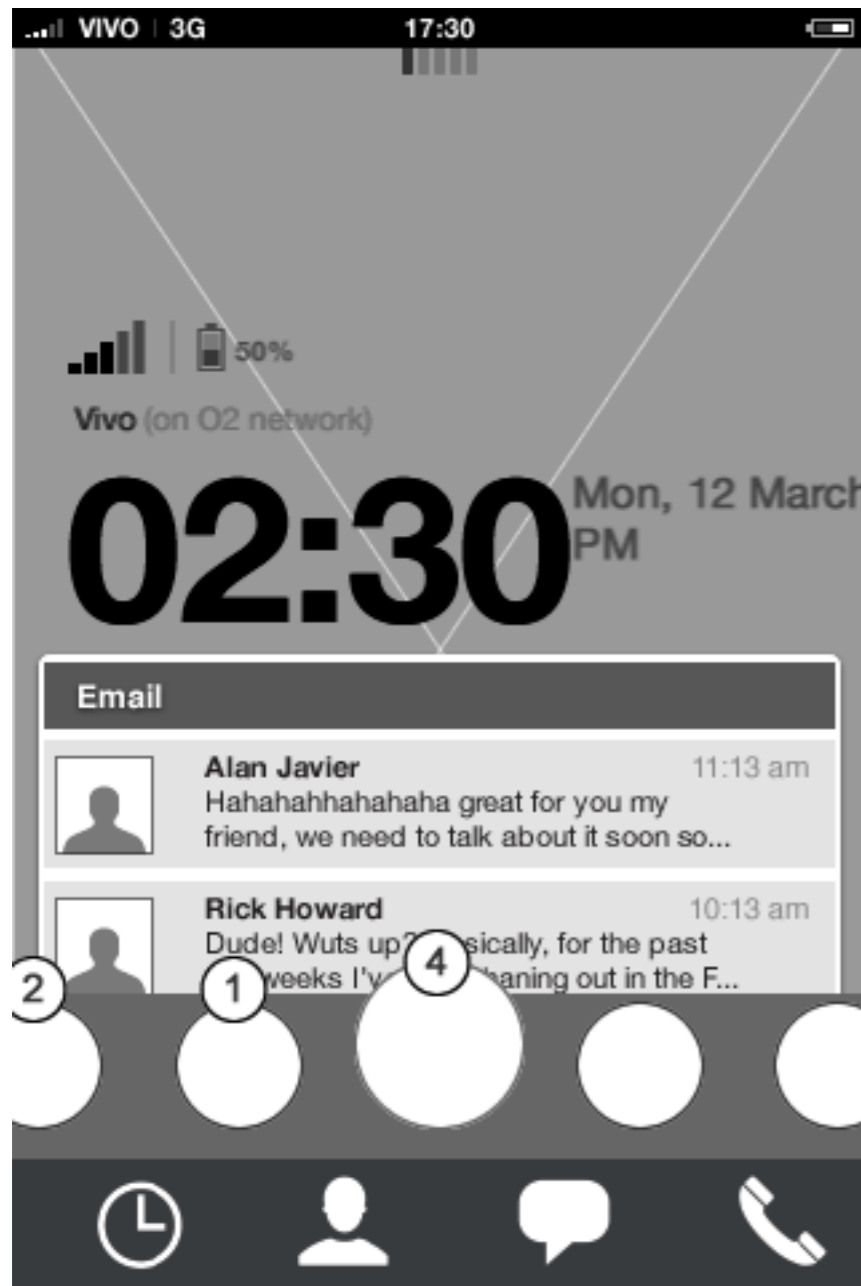
### Homescreen: carousel animation

With the tooltip visible, the user can tap it to expand its preview. Note that carousel apps with no preview will have a different tool tip, which indicates its not interactive.

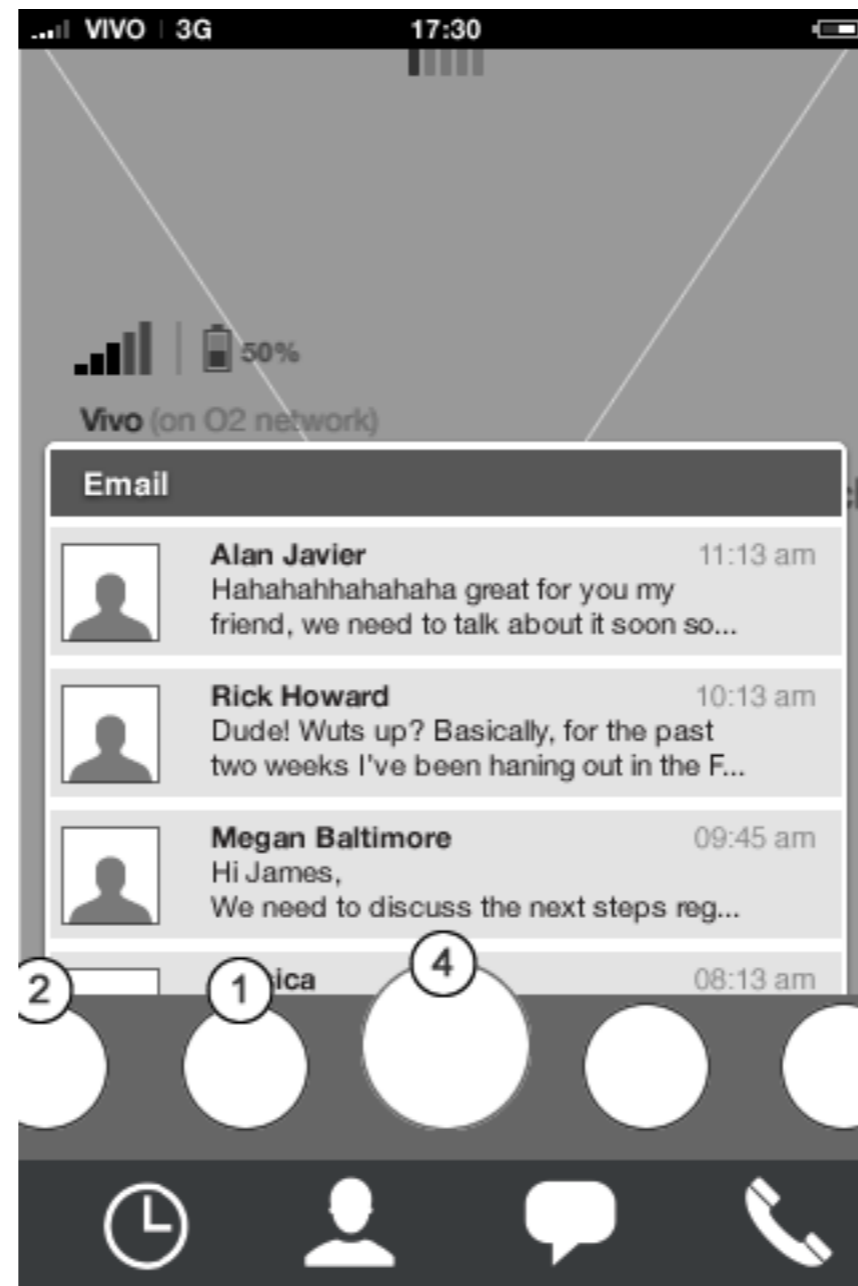


# Home screen

## Carousel: Open animation



Homescreen: carousel animation



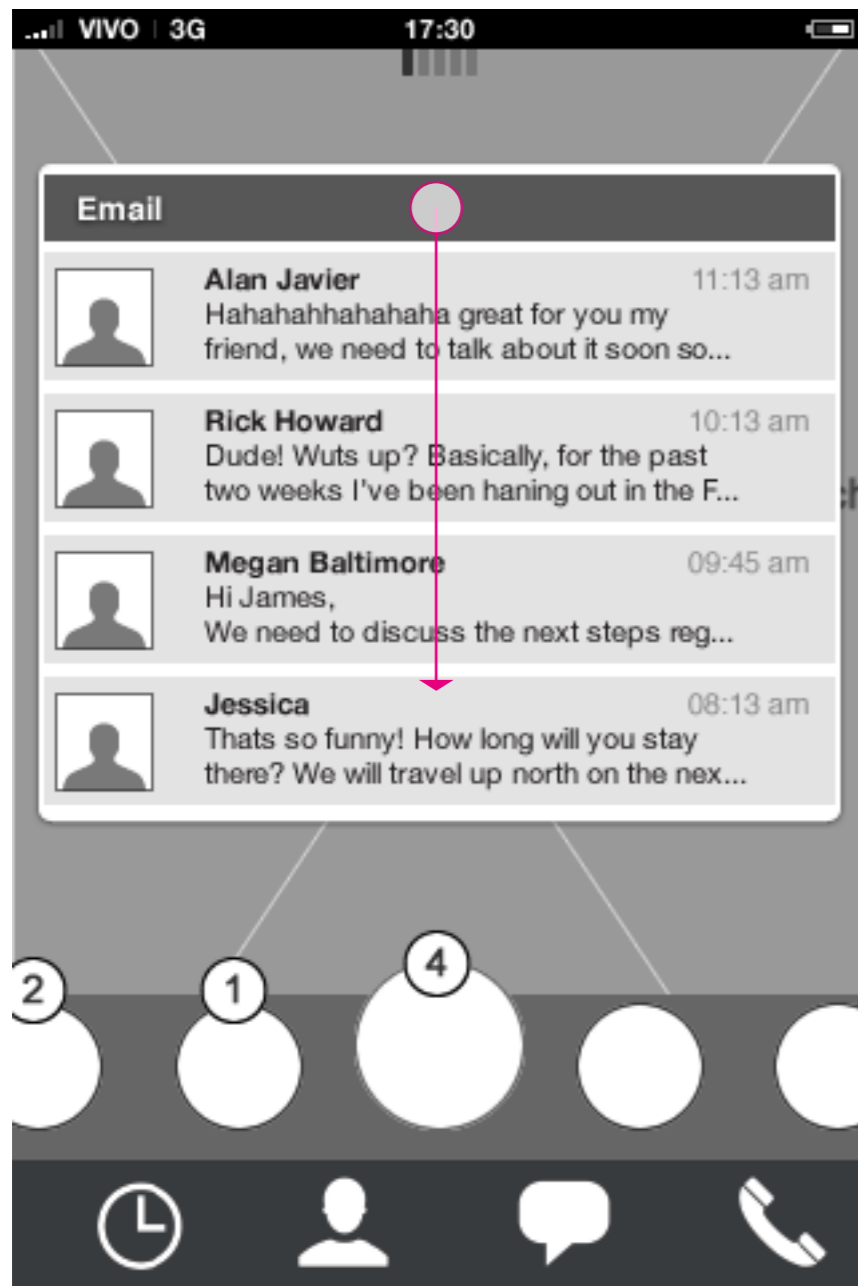
Homescreen: carousel animation



Homescreen: carousel animation  
Preview is fully expanded.

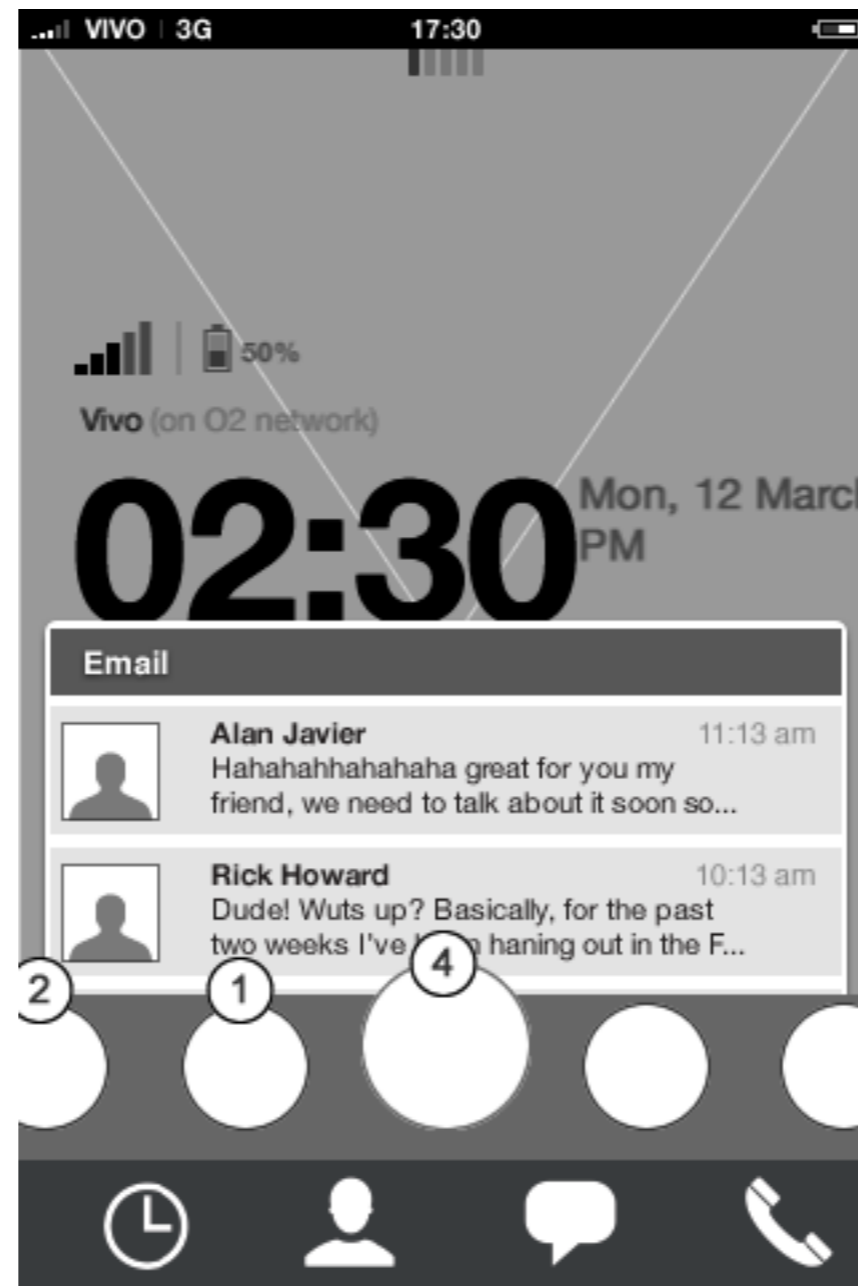
# Home screen

## Carousel: Close Animation



### Homescreen: carousel animation

Tapping, swiping or flicking the title, the preview closes and animates downwards.



### Homescreen: carousel animation

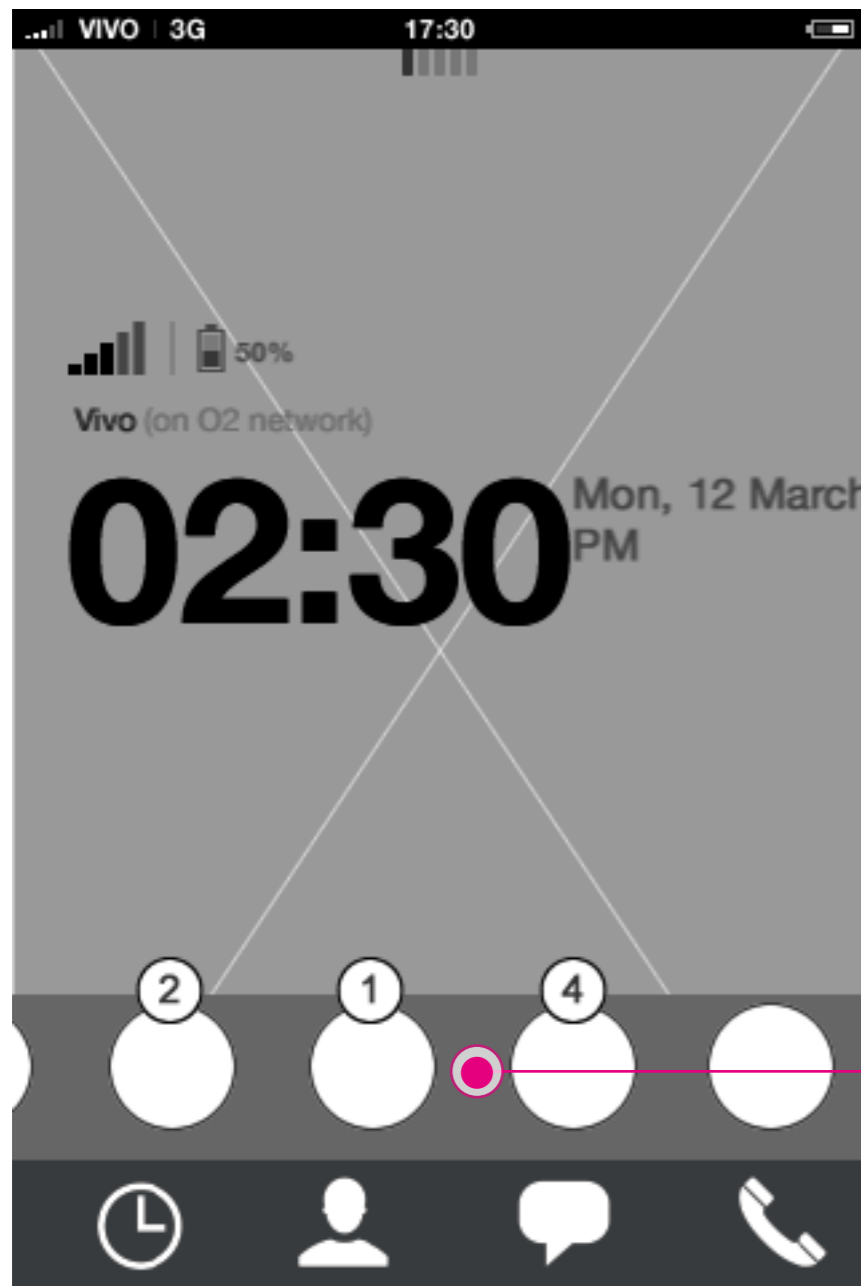


### Homescreen: carousel animation

Preview is fully closed and but tool tip title stays. Badge notification stays until user enters the full app.

# Home screen

## Edit carousel: re-arrange apps



### Homescreen

Long press on the carousel starts edit mode



### Homescreen: carousel edit mode

In edit mode the four key apps cannot be modified. Applications can be re-arranged and edit mode menu for each application can be accessed below each app icon.

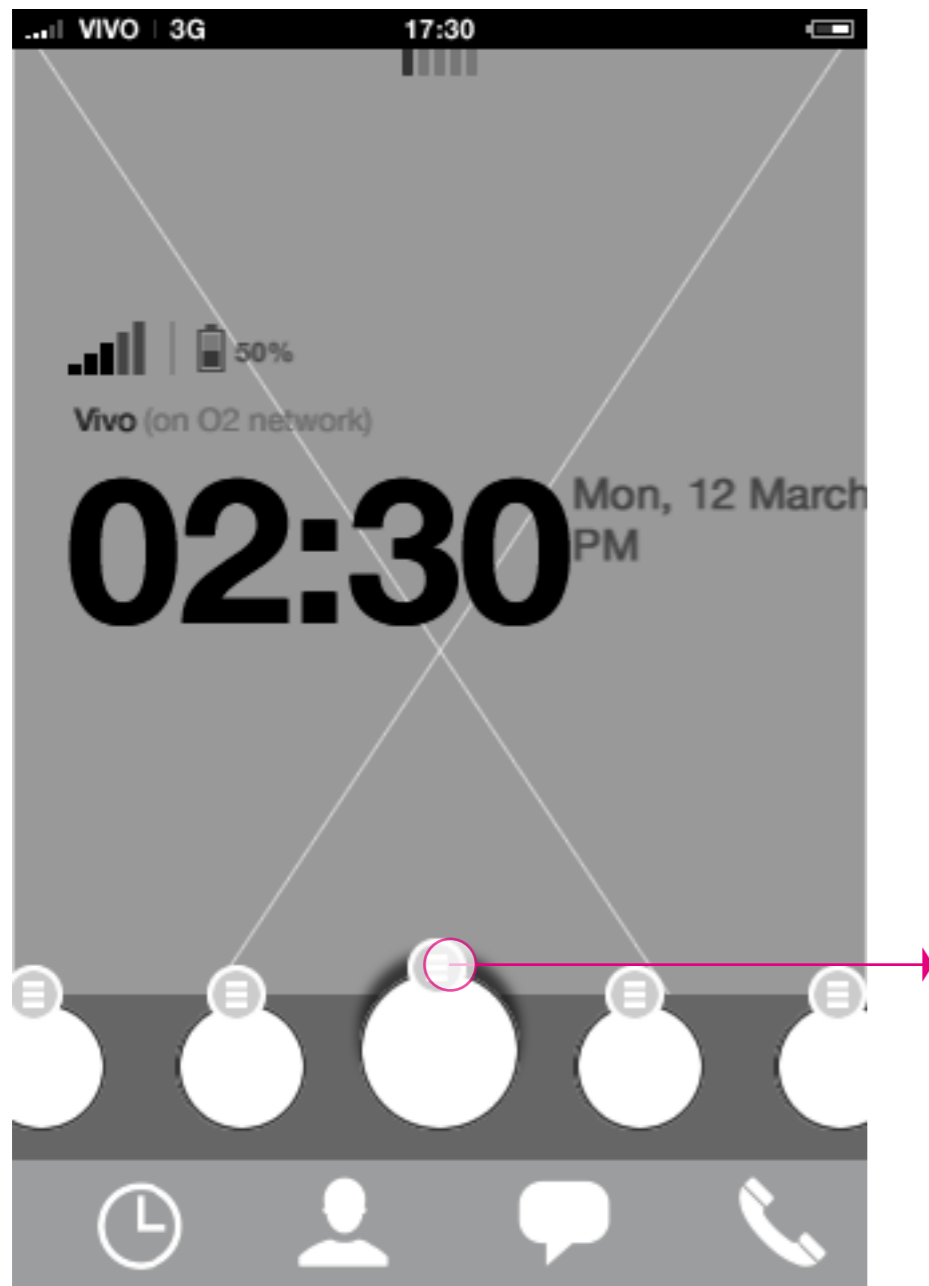


### Homescreen: carousel edit mode

Re-arranging the order of carousel apps is done through drag and drop. (For more details see edit mode document)

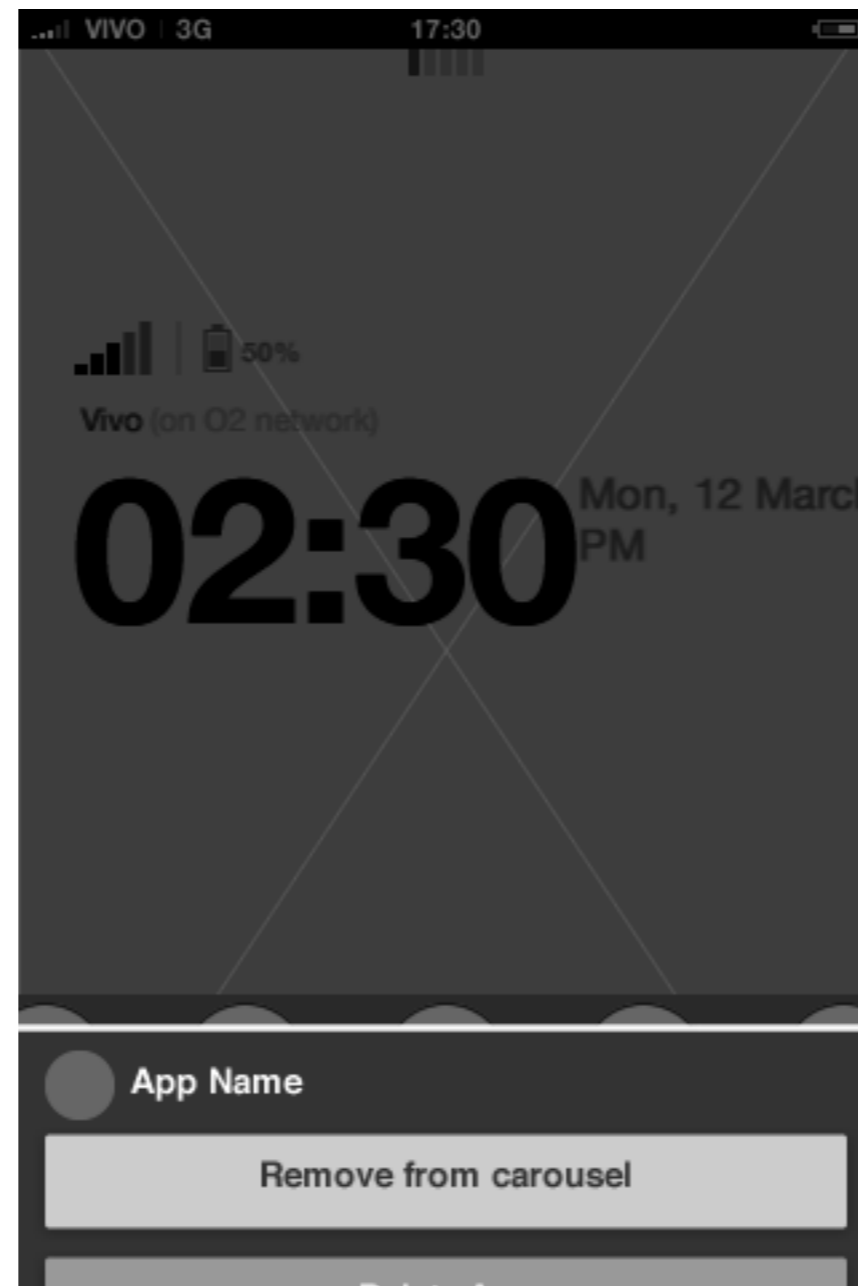
# Home screen

## Edit carousel: menu



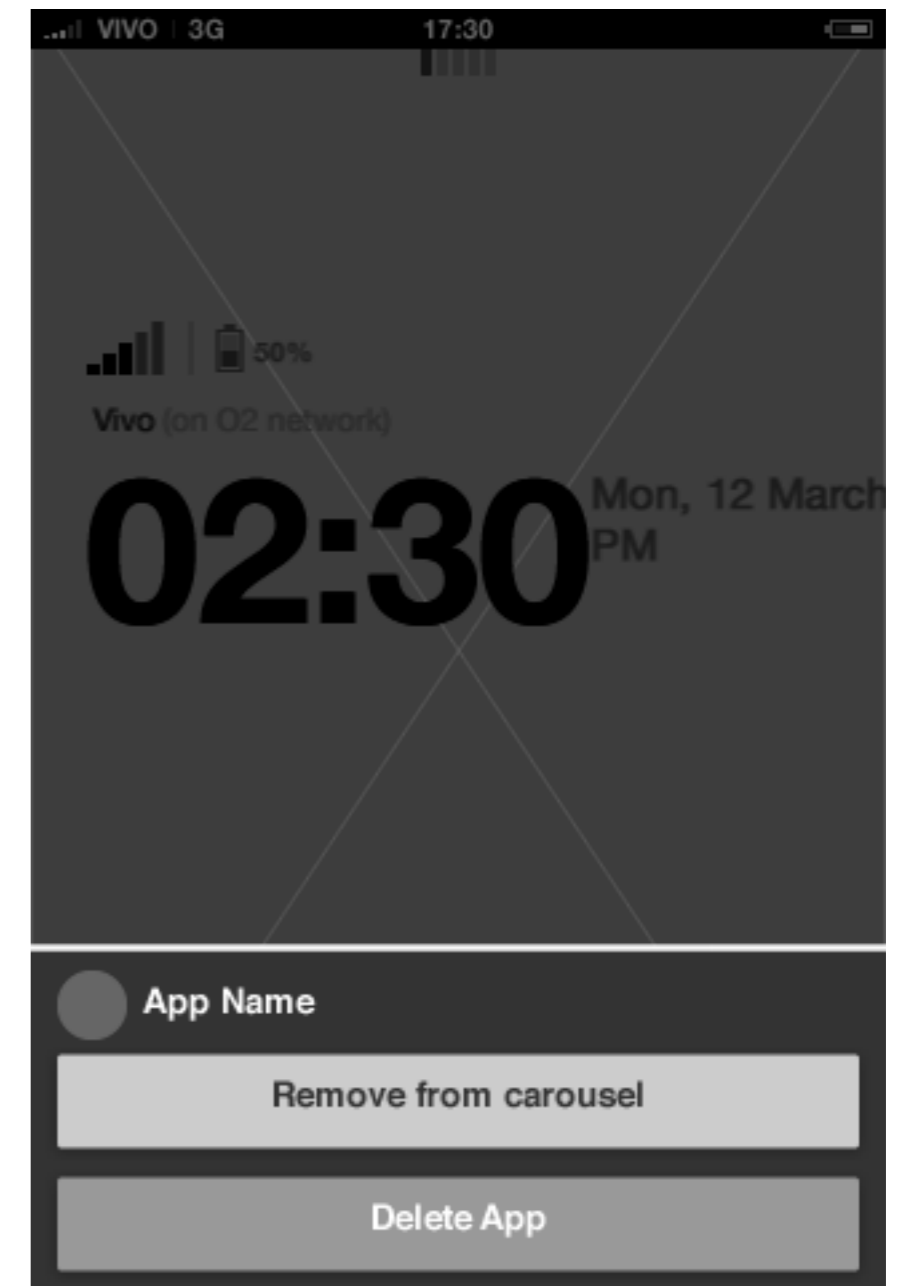
### Homescreen: carousel edit mode

Tapping the menu edit icon brings out additional app specific actions.



### Homescreen: carousel edit mode

The app specific actions animates up from the bottom of the screen.

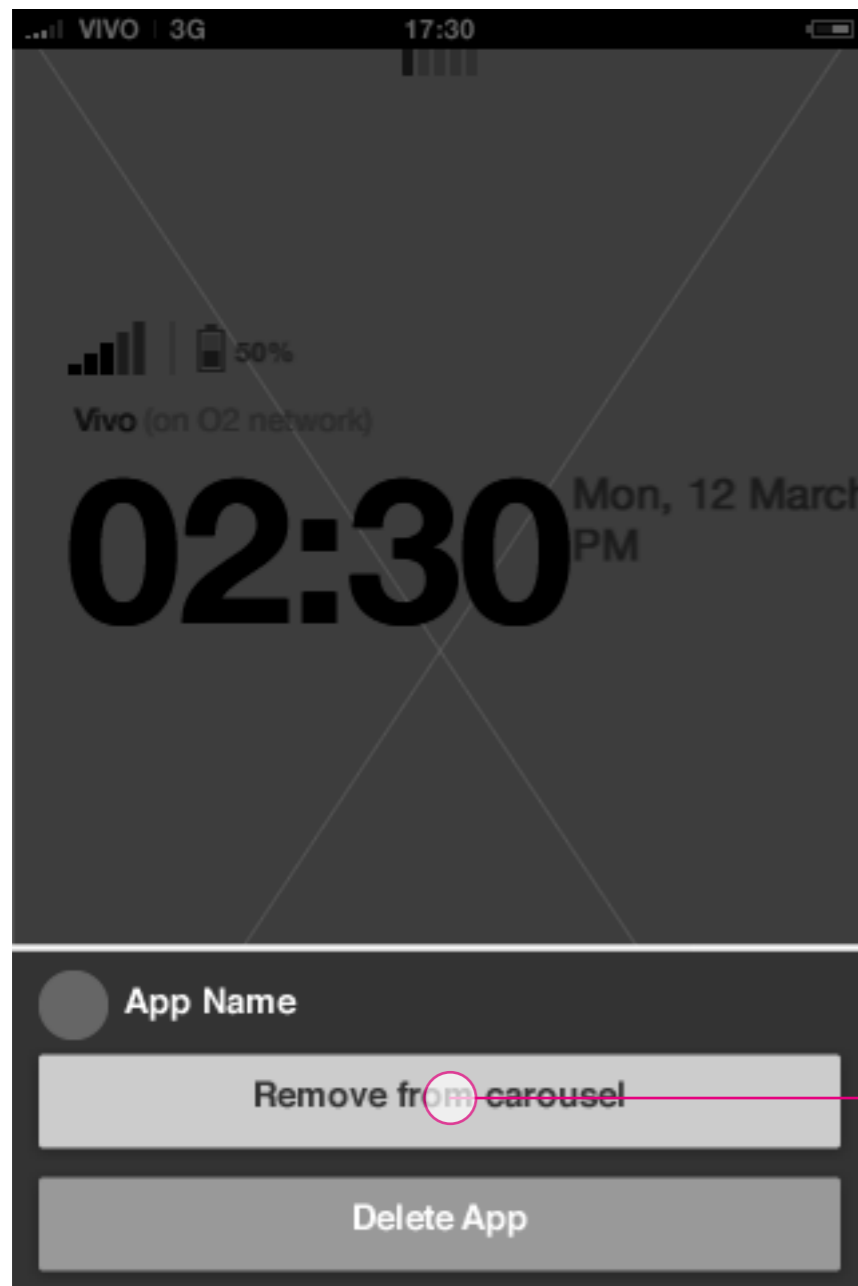


### Homescreen: carousel edit mode

The menu can hold multiple application specific edit actions, and is closed by tapping outside the menu.

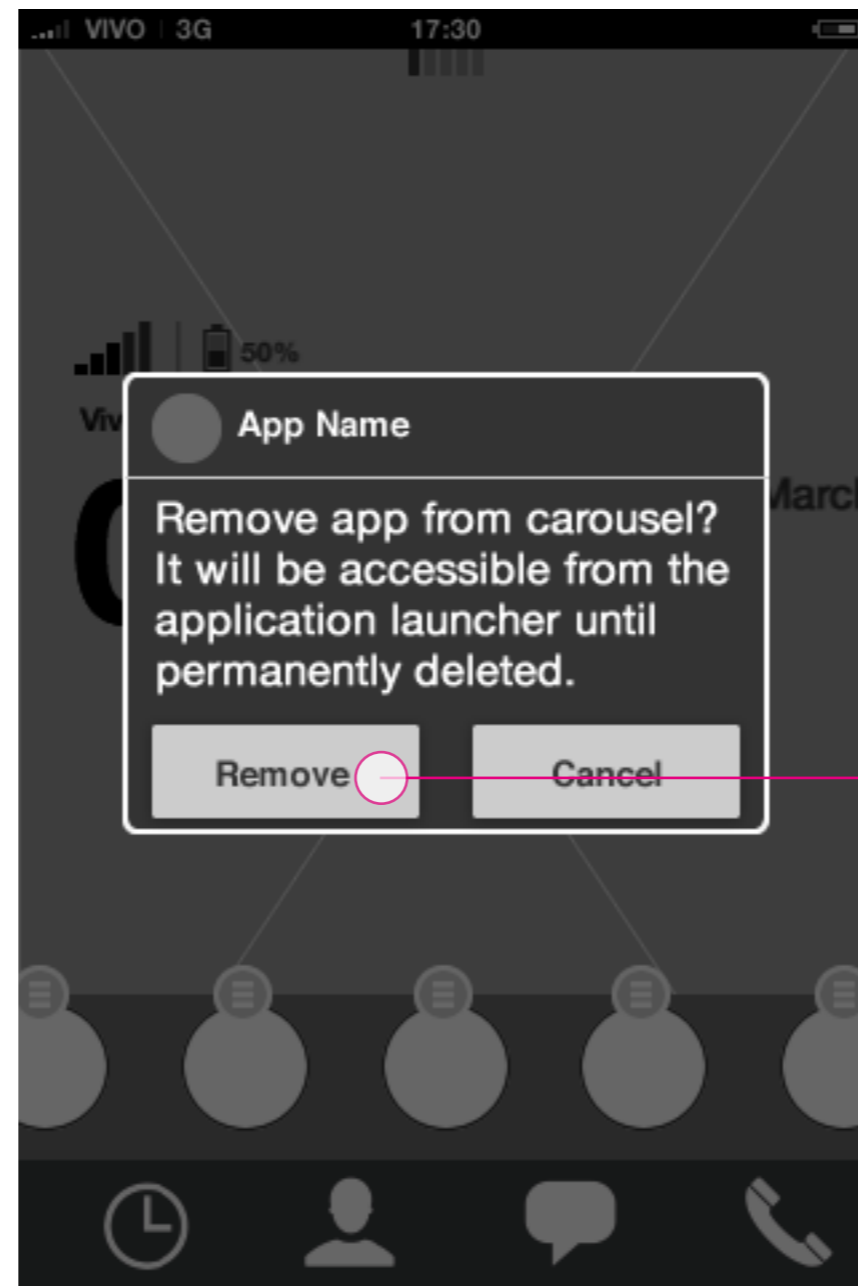
# Home screen

## Edit carousel: remove from carousel



### Homescreen: carousel edit mode

Tapping remove from carousel button brings out a confirmation dialogue.



### Homescreen: carousel edit mode

The confirmation dialogue is used for the user to confirm

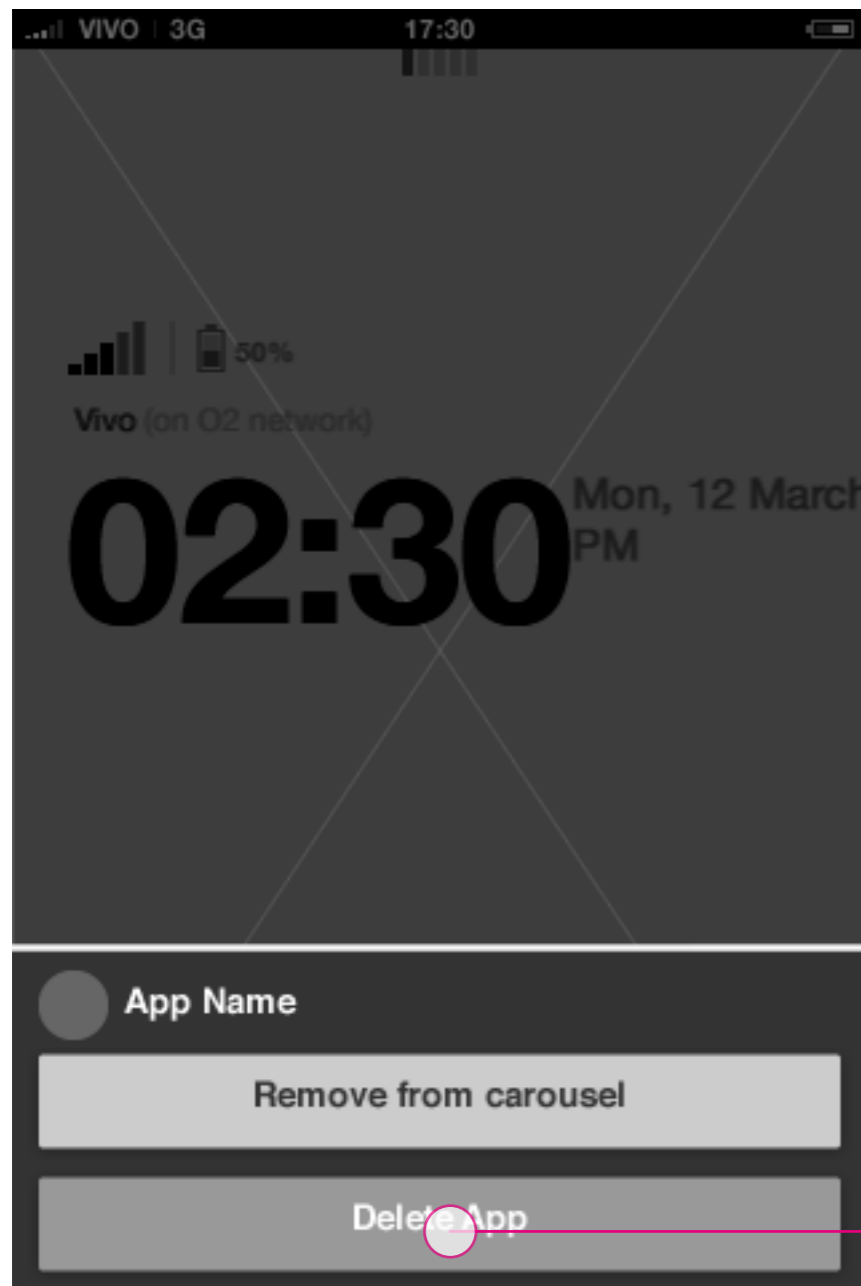


### Homescreen: carousel edit mode

After confirming the action, the carousel animates away the removed app and fills out the empty application slot with apps to the right. The removed app will get the first empty slot in the application launcher.

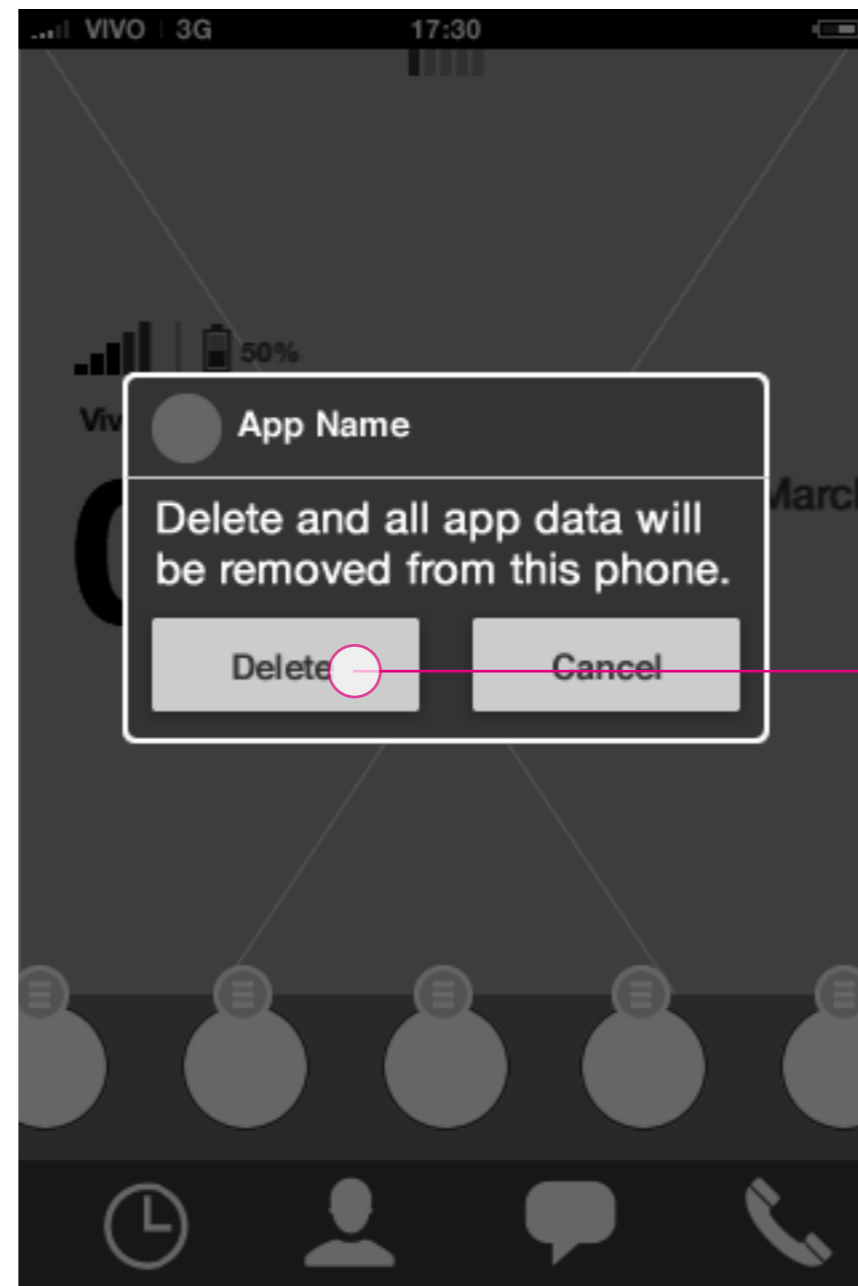
# Home screen

## Edit carousel: delete app



### Homescreen: carousel edit mode

Tapping delete app button brings out a confirmation dialogue.



### Homescreen: carousel edit mode

The confirmation dialogue is used for the user to confirm



### Homescreen: carousel edit mode

After confirming the action, the carousel animates away the deleted app and fills out the empty application slot with apps to the right.

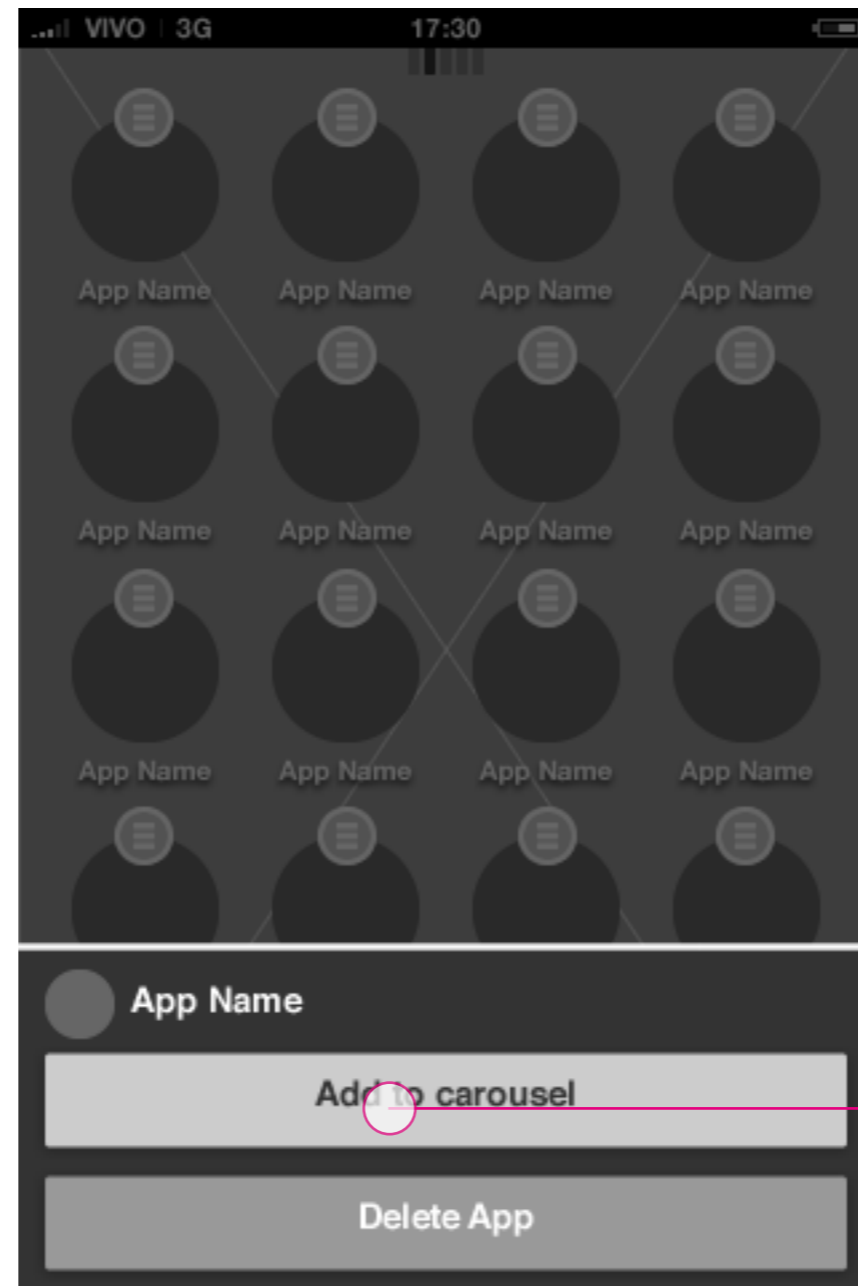
# Home screen

## App launcher: edit mode - add to carousel

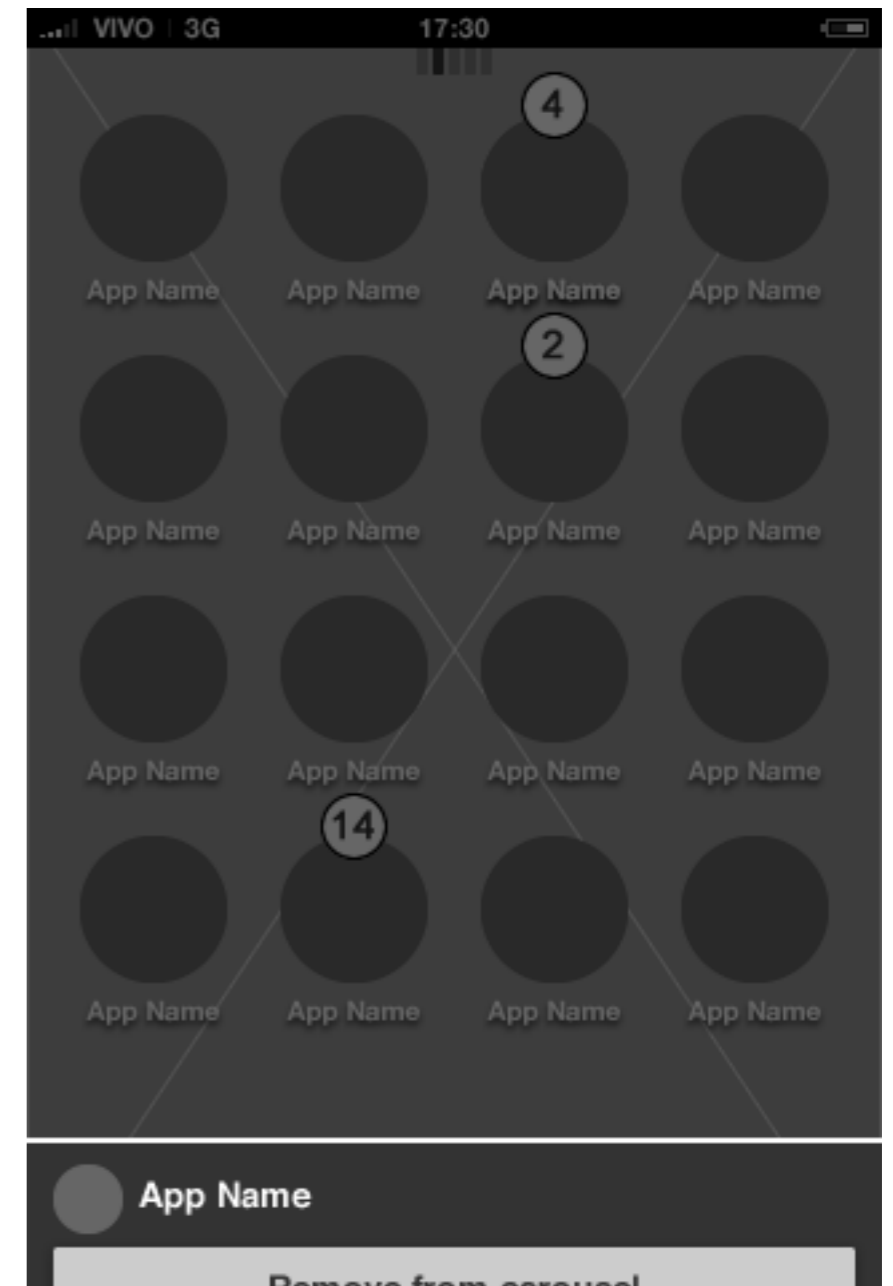


**App launcher: edit mode**

Tap edit menu for a specific app to take application actions.



**App launcher: edit mode menu**

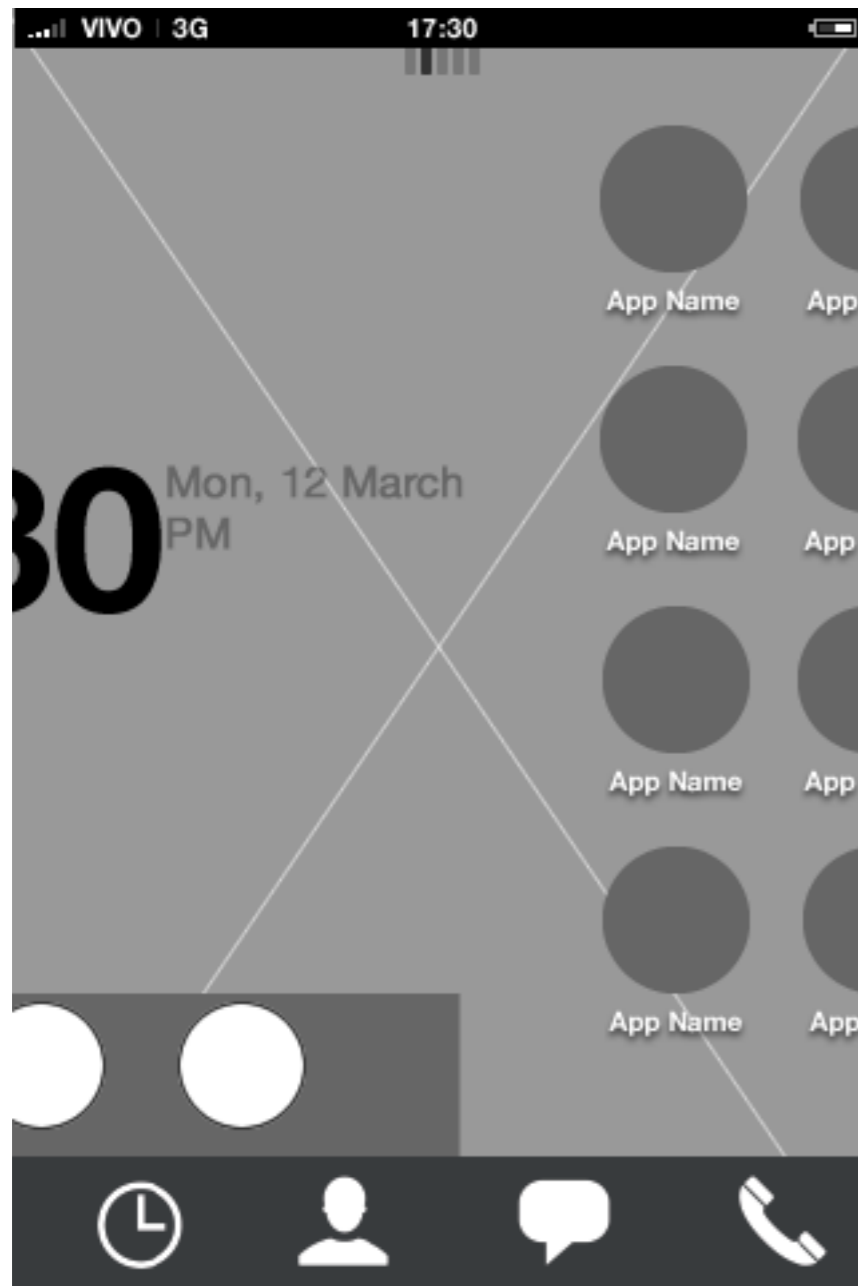


**App launcher: edit mode - add to carousel animation**

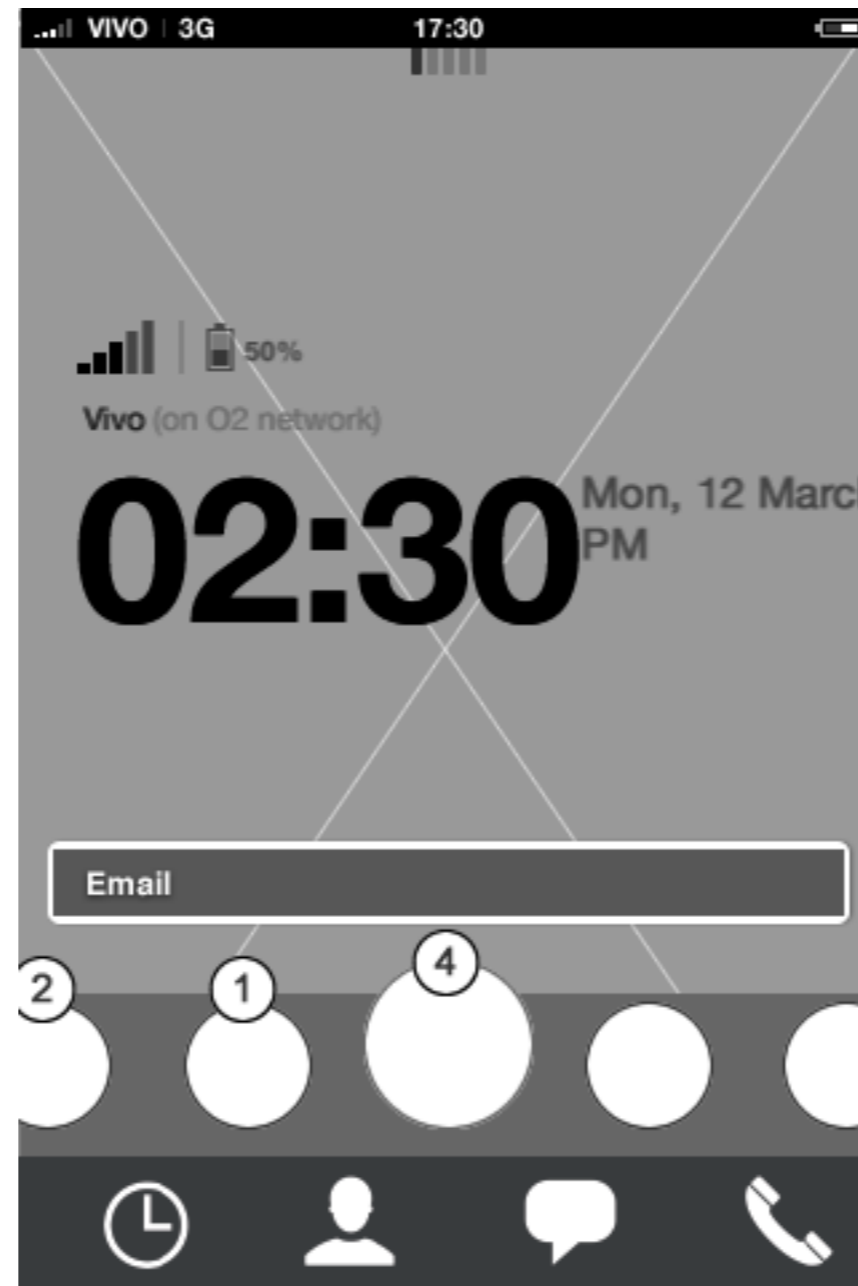
Add to carousel animation started

# Home screen

## App launcher: edit mode - add to carousel



App launcher: edit mode - add to carousel animation



App launcher: edit mode - add to carousel animation



App launcher: edit mode - add to carousel animation

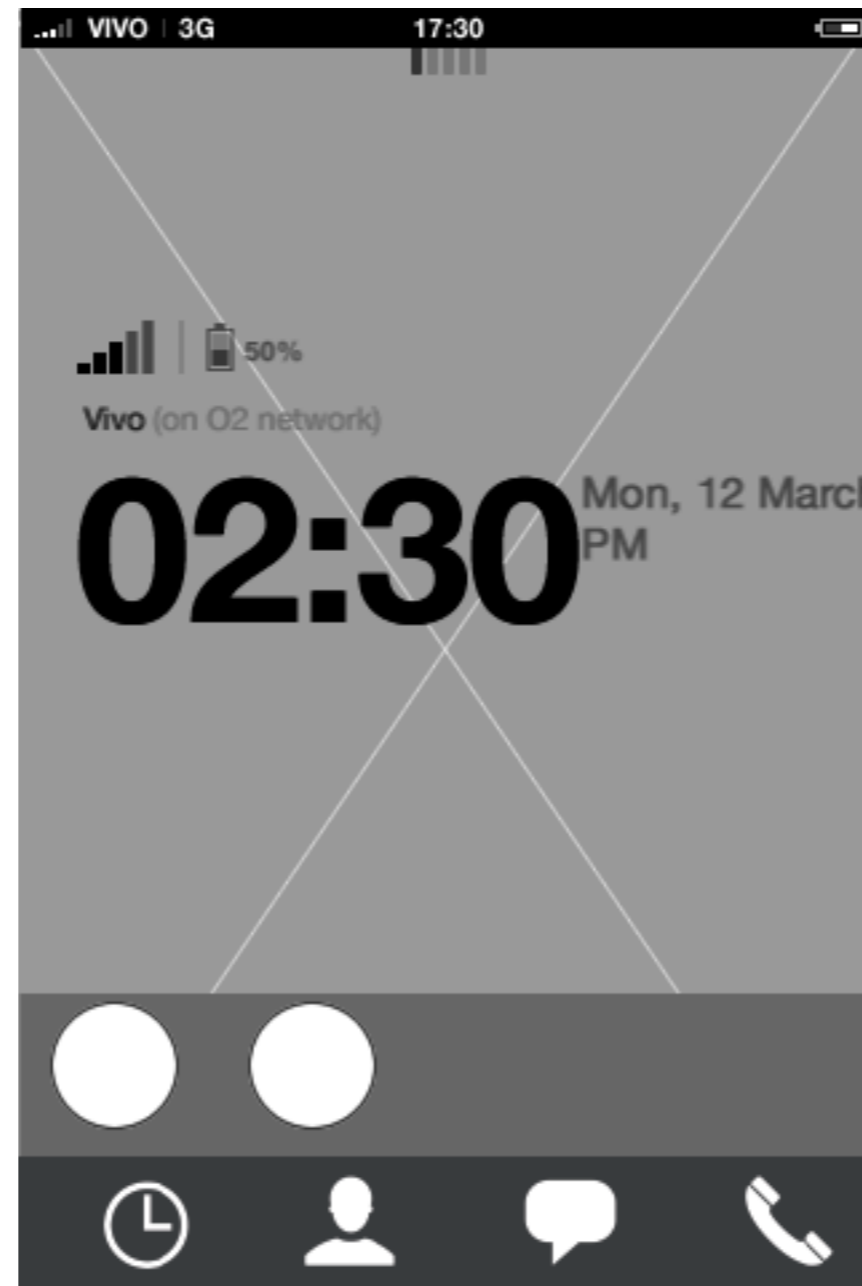


# Home screen

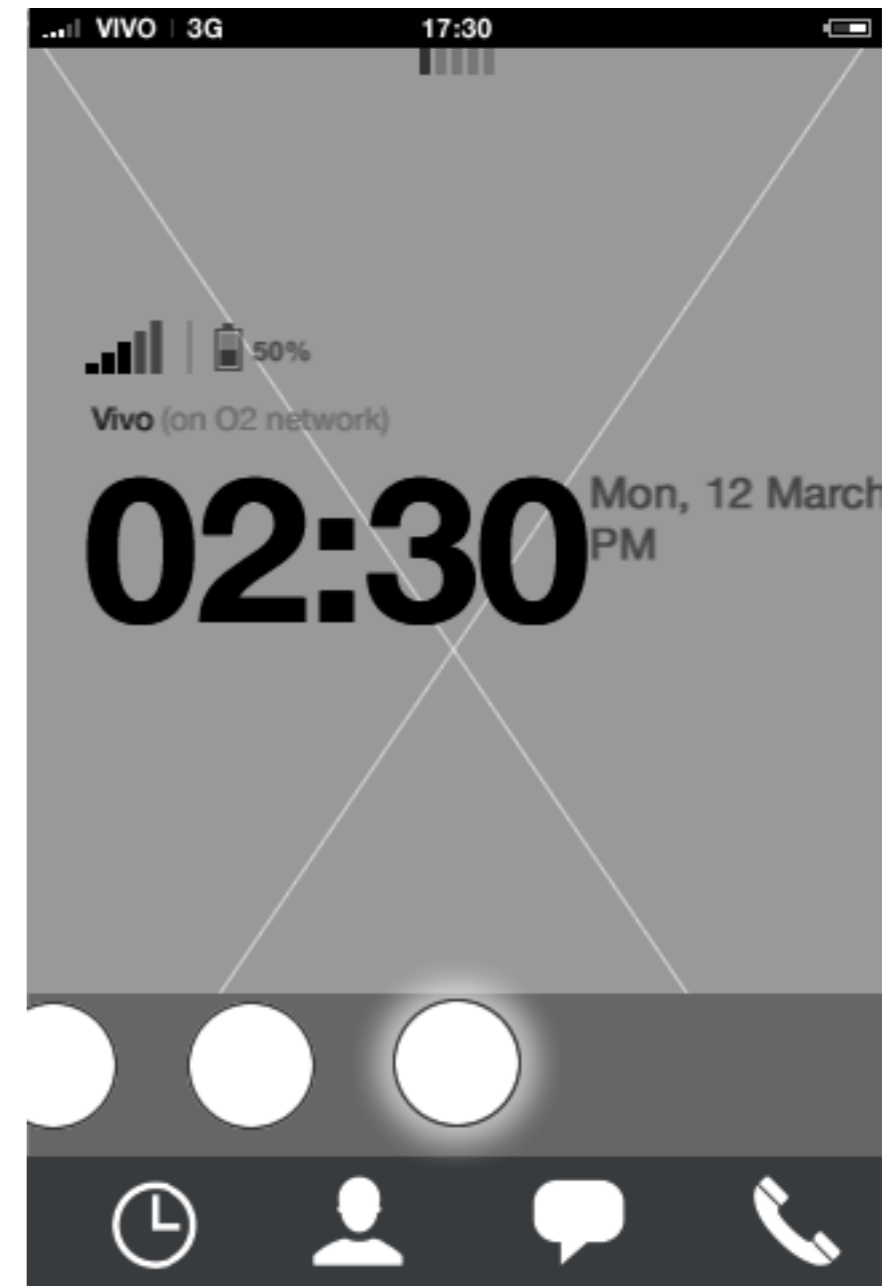
## App launcher: edit mode - add to carousel



App launcher: edit mode - add to carousel animation



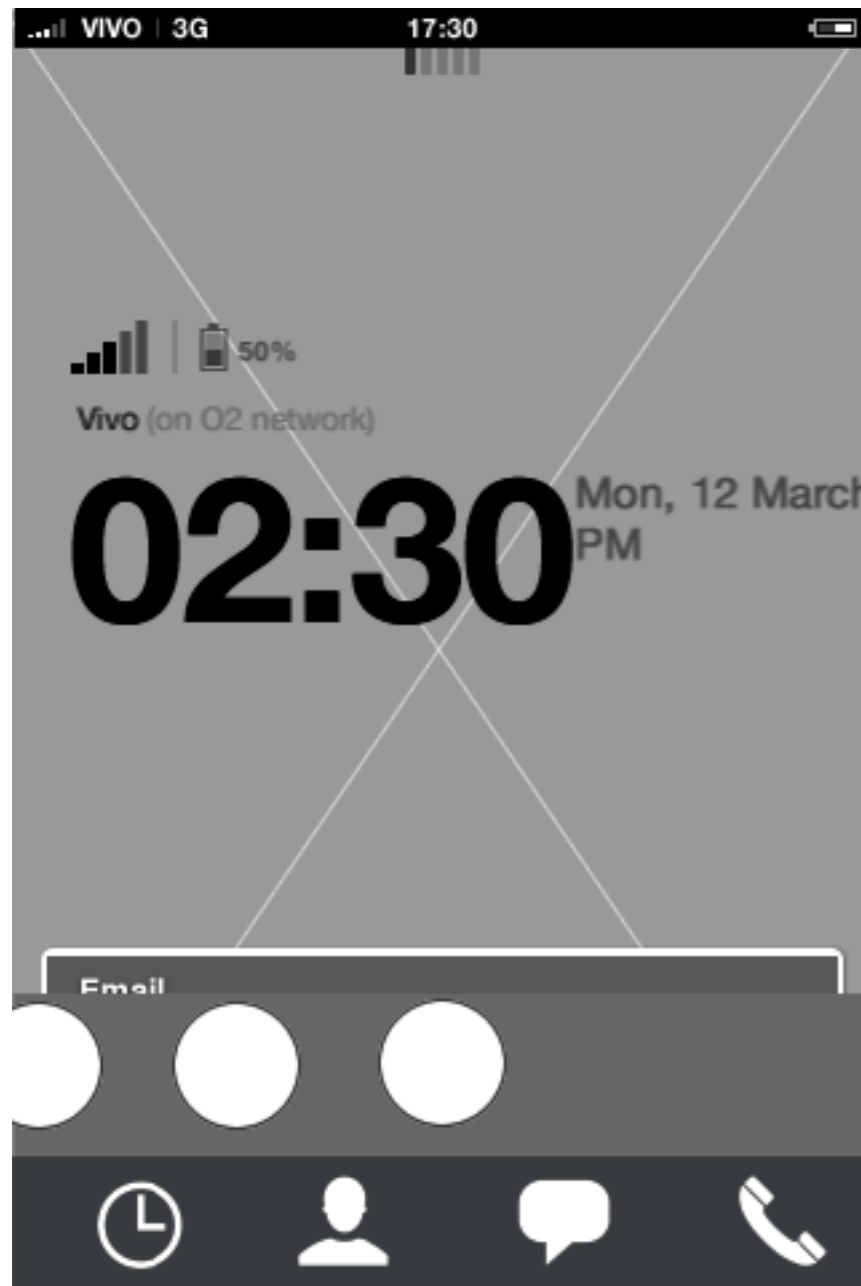
App launcher: edit mode - add to carousel animation



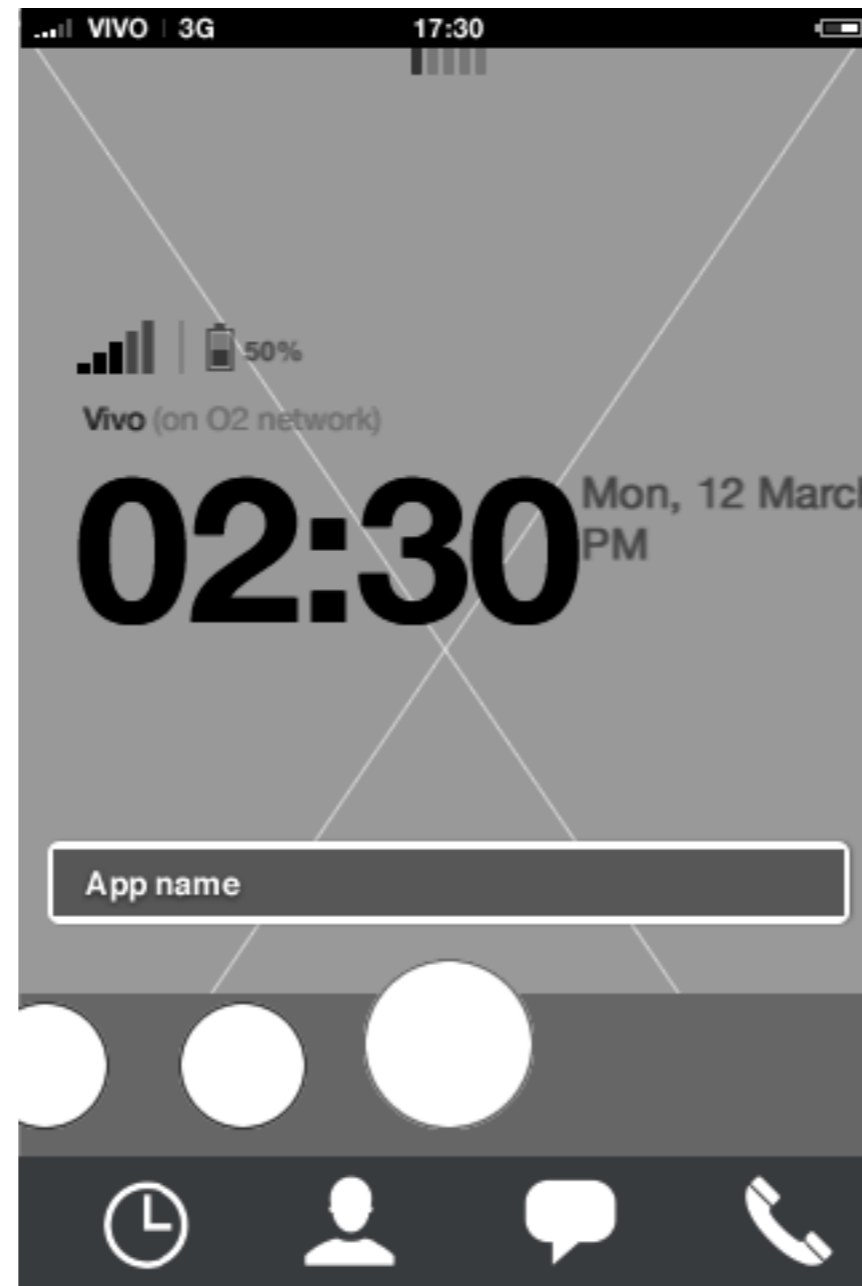
App launcher: edit mode - add to carousel animation

# Home screen

## App launcher: edit mode - add to carousel



**App launcher: edit mode - add to carousel animation**

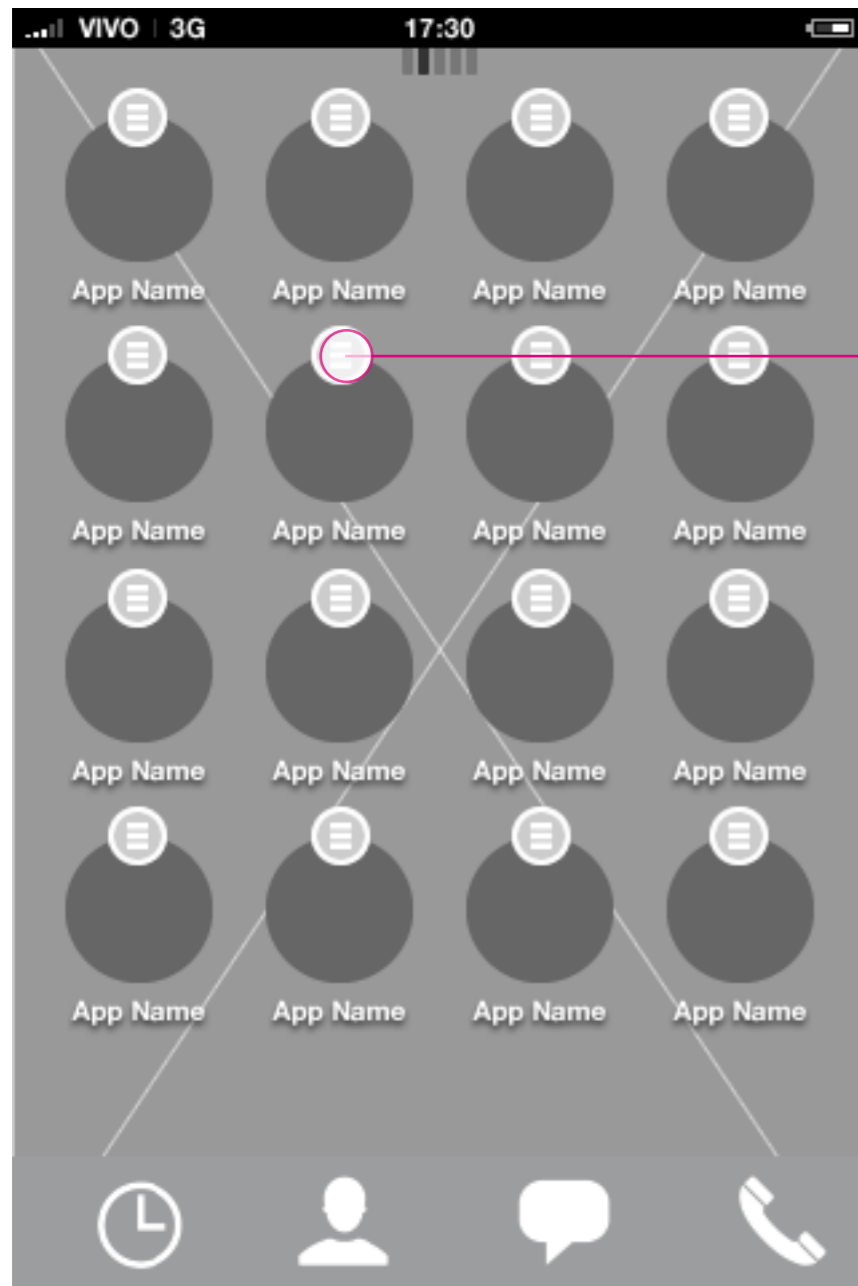


**App launcher: edit mode - add to carousel animation**

When animation finishes, the application added to the carousel gets in focus and is located in the last available carousel slot. In order to re-position the application, the user needs to enter edit mode.

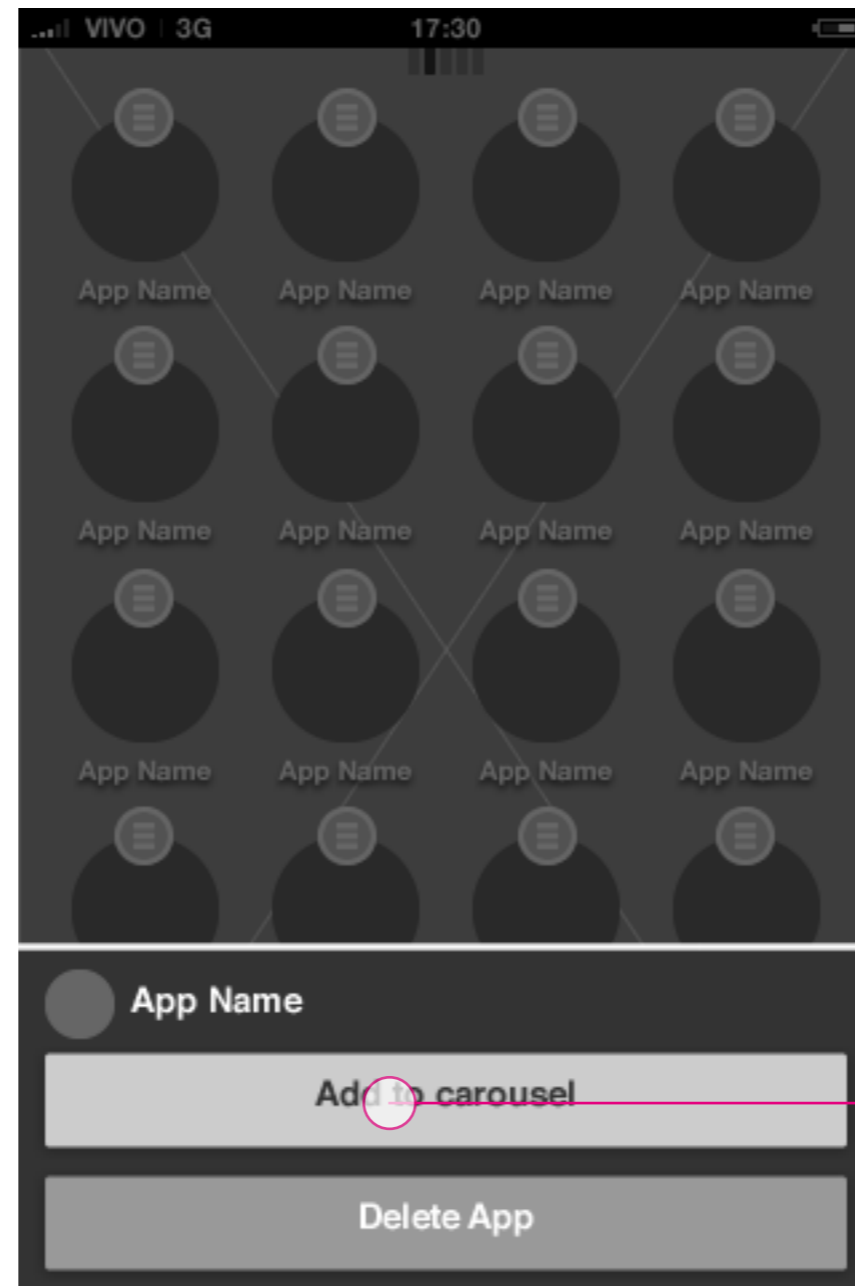
# Home screen

## App launcher: edit mode - add to full carousel

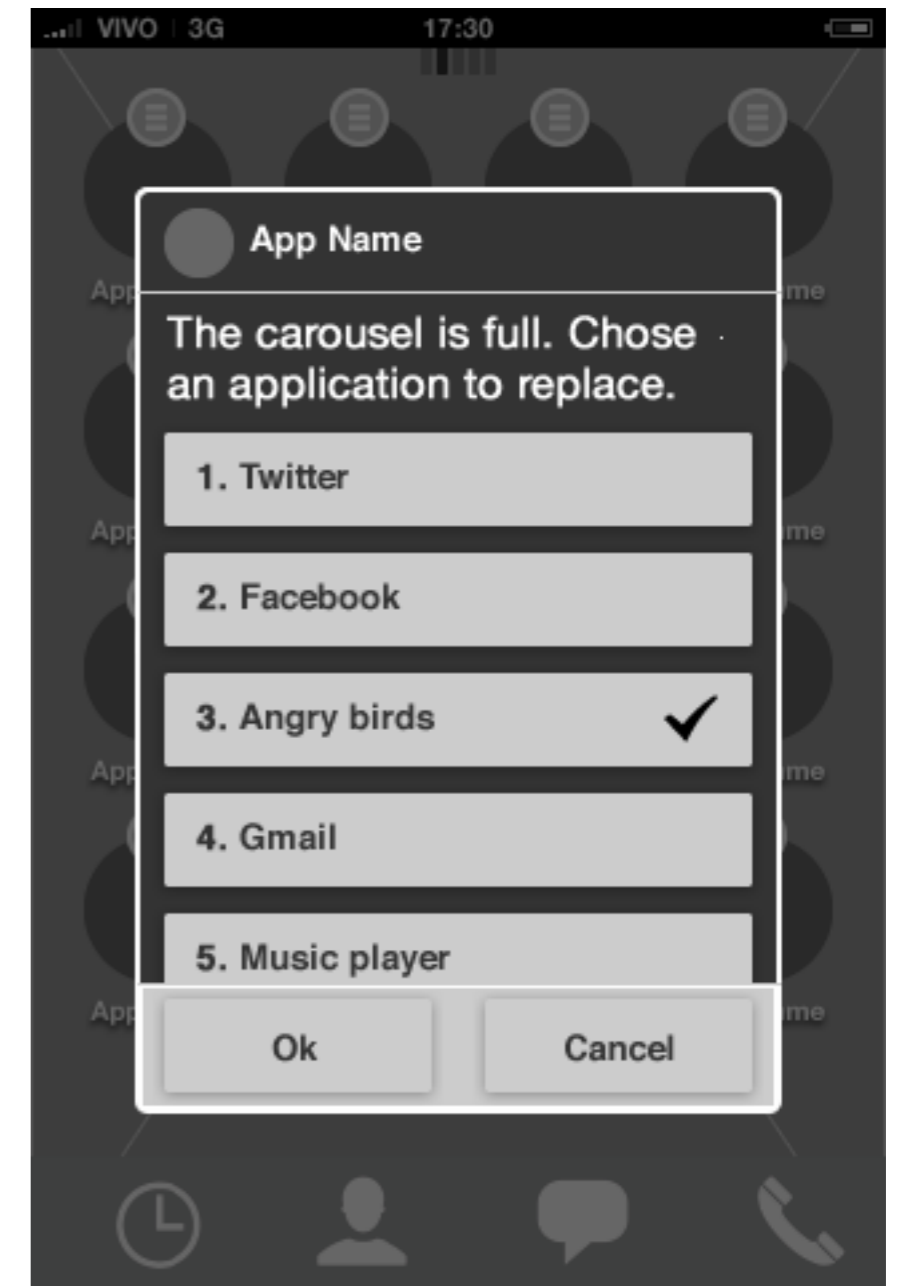


### App launcher: edit mode

Tap edit menu for a specific app to take application actions.



### App launcher: edit mode menu

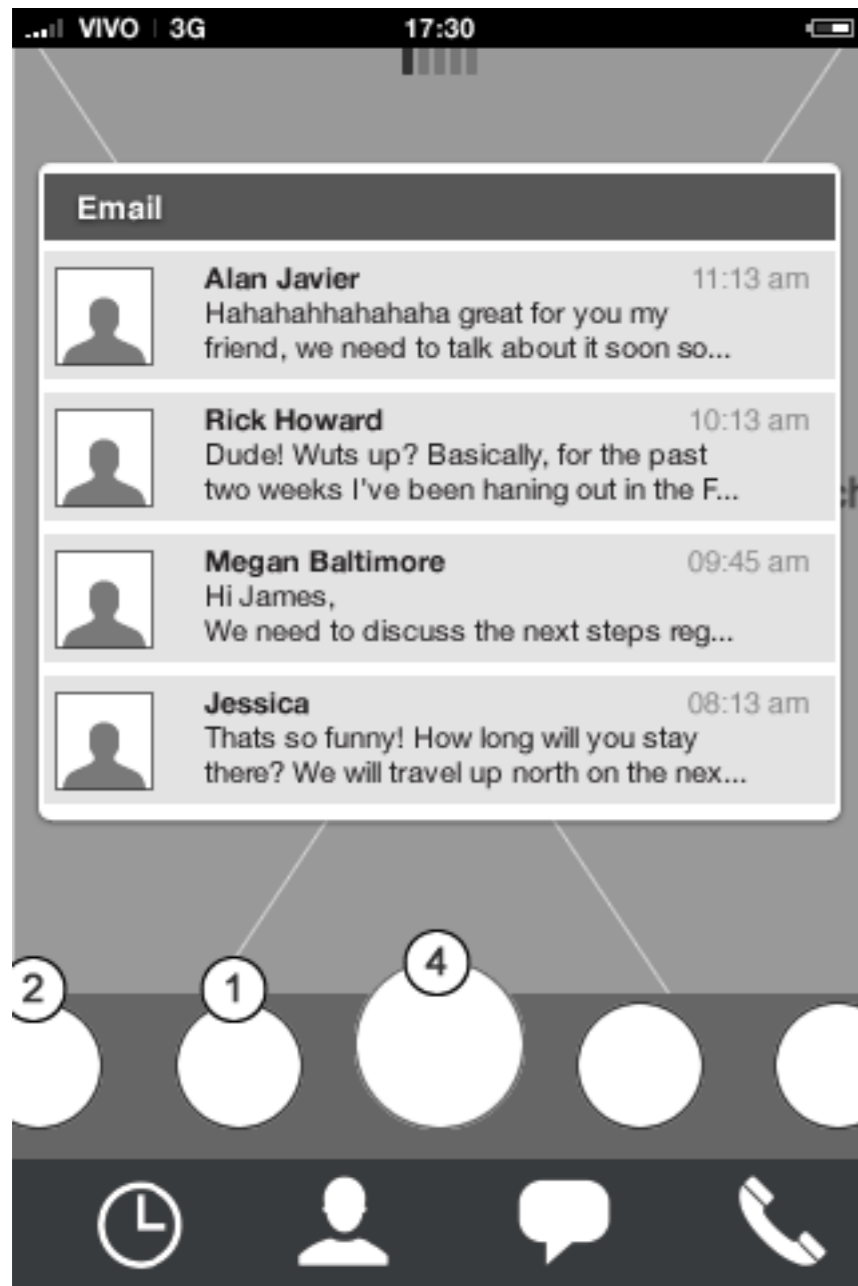


### App launcher: edit mode - add to carousel

When adding an app when the carousel is full, the user needs to replace an app since only 9 apps can fit the carousel. Upon confirming, the add app animation starts showing the position of the app.

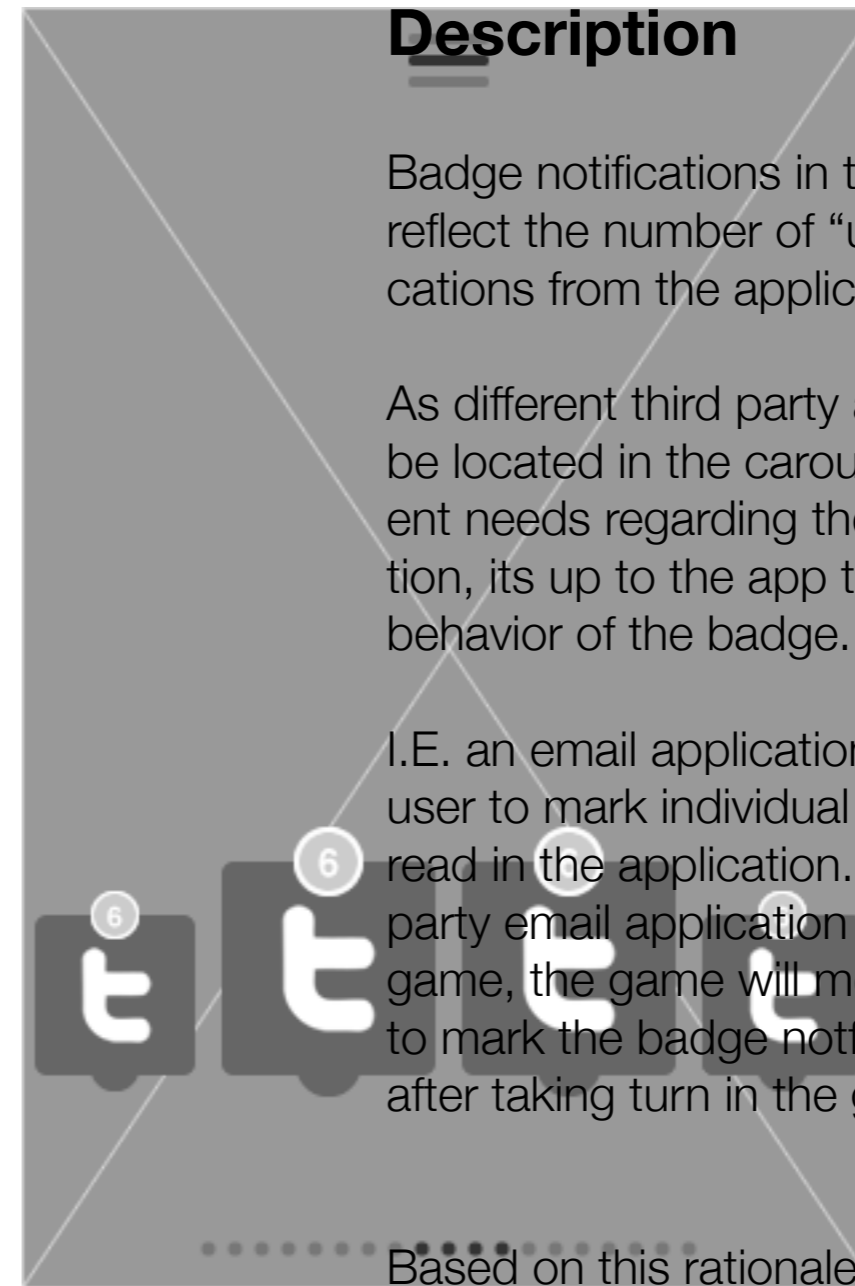
# Idle screen

## Badge behavior: Carousel



### Homescreen: Preview open

Badge notifications in the carousel will reflect the number of “unmarked” notifications from the application.



### Description

Badge notifications in the carousel will reflect the number of “unmarked” notifications from the application.

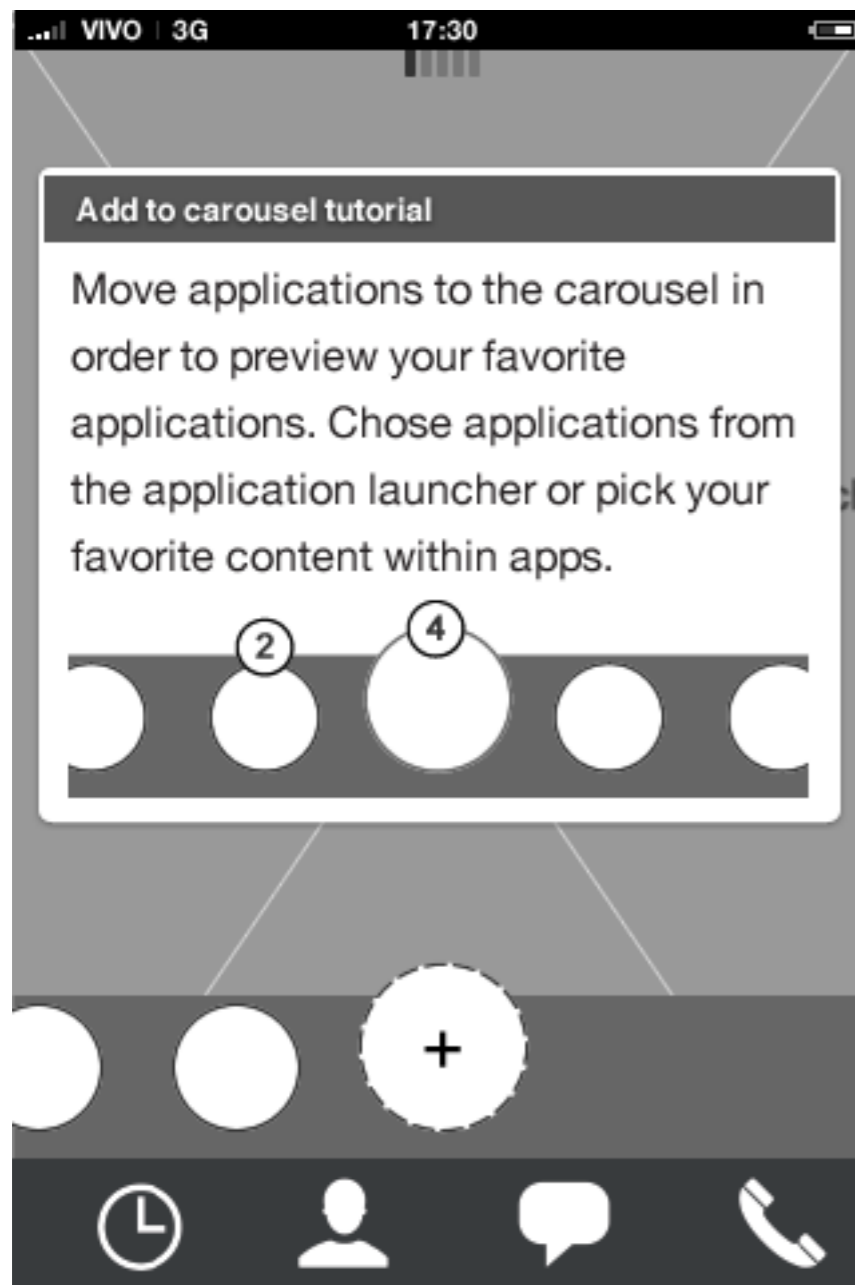
As different third party applications will be located in the carousel, all with different needs regarding the badge notification, its up to the app to determine the behavior of the badge.

I.E. an email application will require the user to mark individual messages as read in the application. Comparing a third party email application with a turn based game, the game will most likely to prefer to mark the badge notification as read after taking turn in the game.

Based on this rationale, its up to each application to determine the badge behavior.

# Home screen

## Carousel: Tutorial



**Homescreen: Add to carousel tutorial**  
Tutorial preview open.

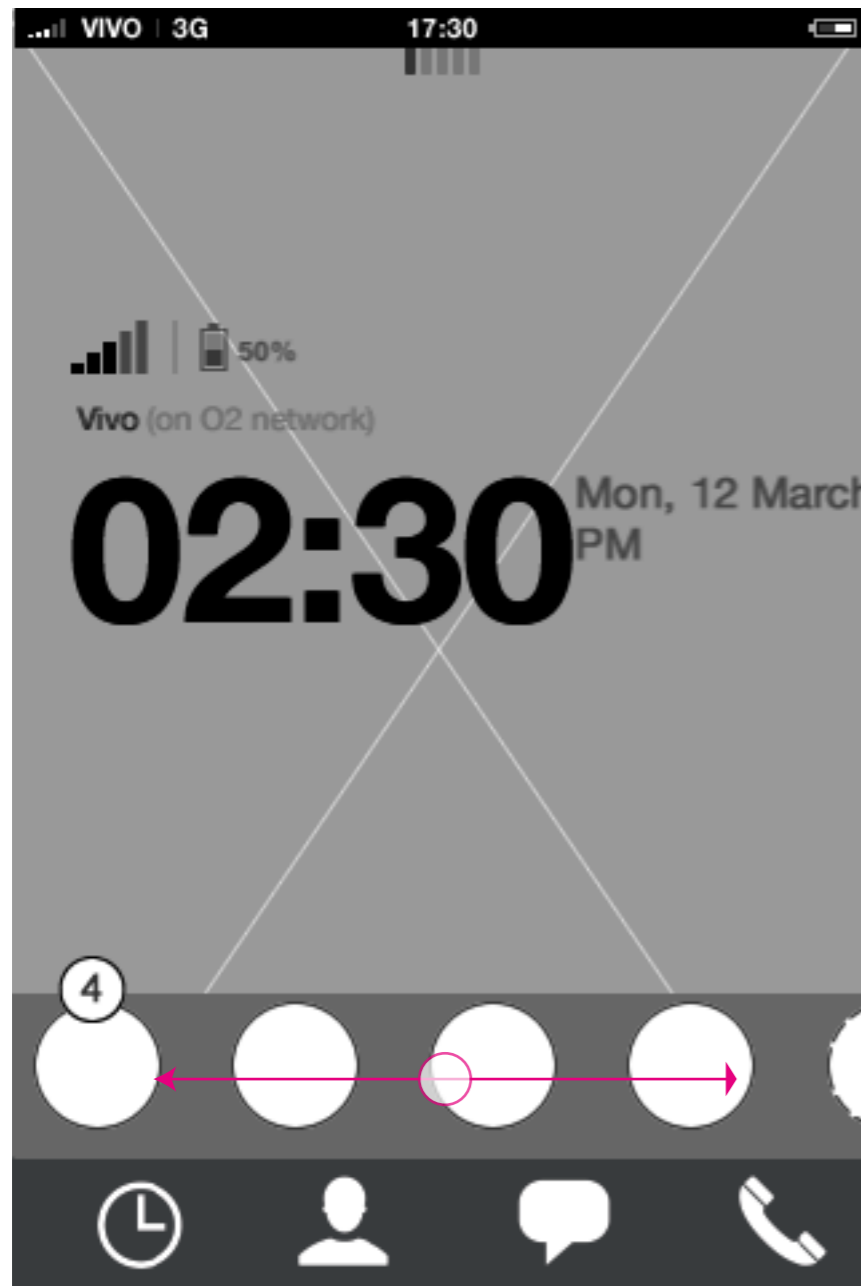
## Description

The add to carousel tutorial explains how applications can be added to the carousel. It also lets the user start with it straight away by tapping its app icon.

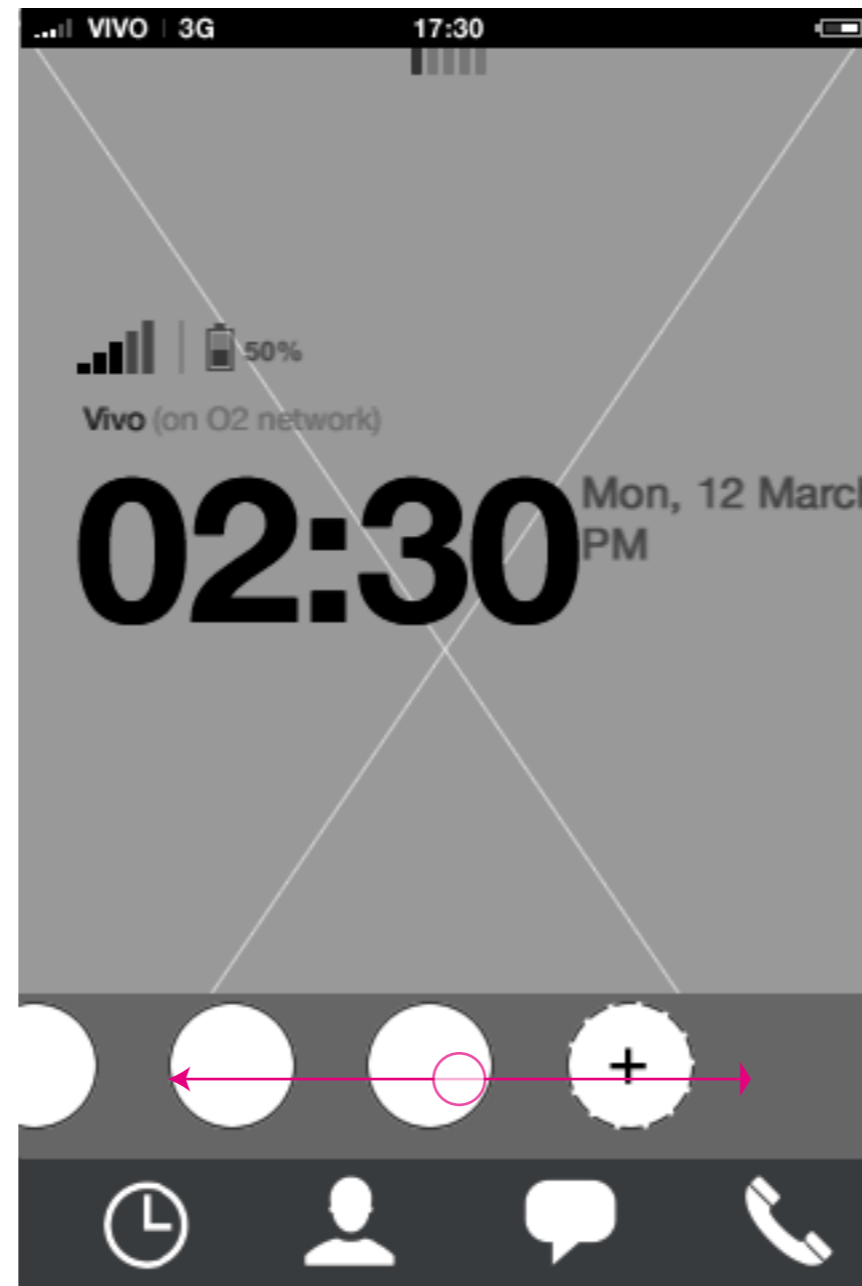
The tutorial preview has the same behavior as other applications, except that the content in the preview is static and purely for explanation.

The tutorial app can be removed through edit mode, but it can also be made visible again from edit mode.

# Home screen Carousel: Tutorial



**Homescreen: Add to carousel tutorial**  
Swiping to the very far end of the carousel, a add to carousel button will be available.



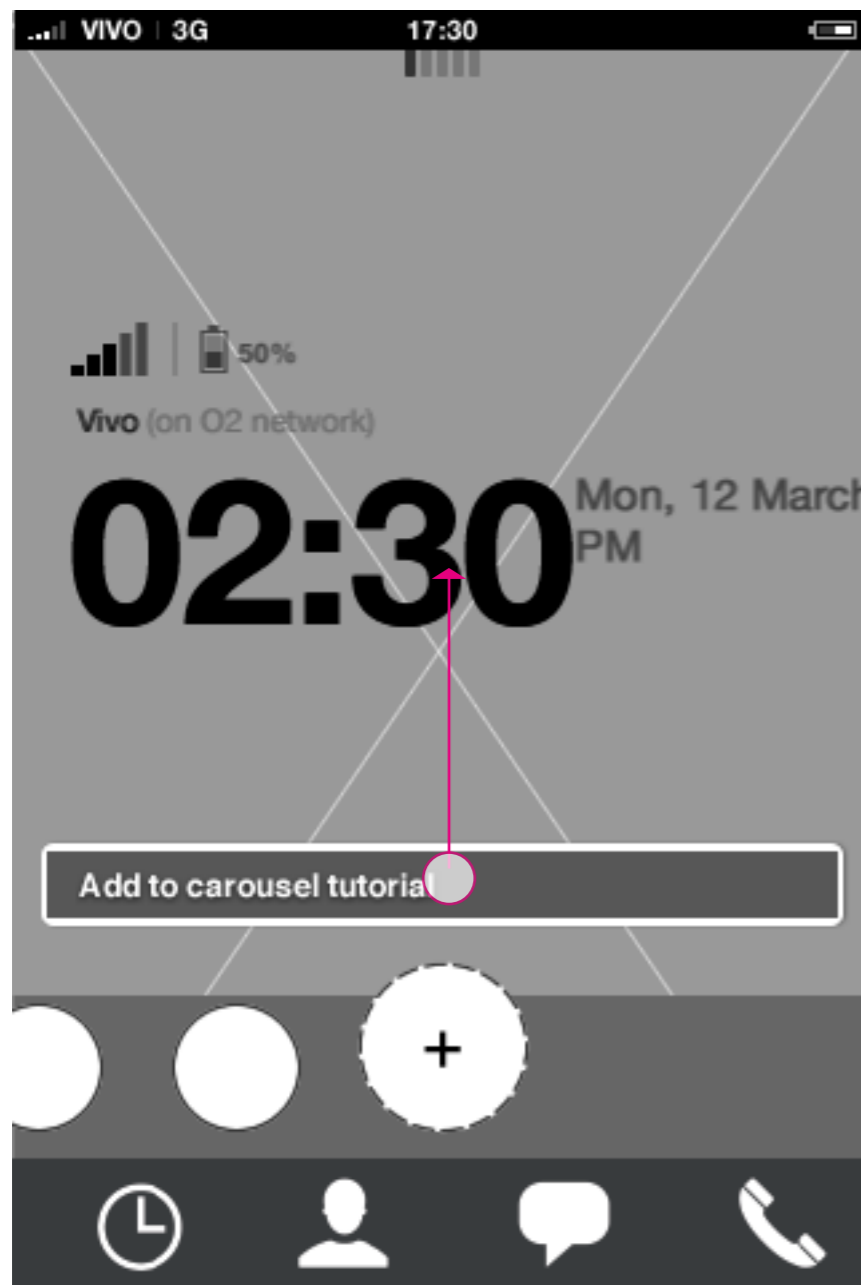
**Homescreen: Add to carousel tutorial**  
Swiping to the very far end of the carousel, a add to carousel button will be available.



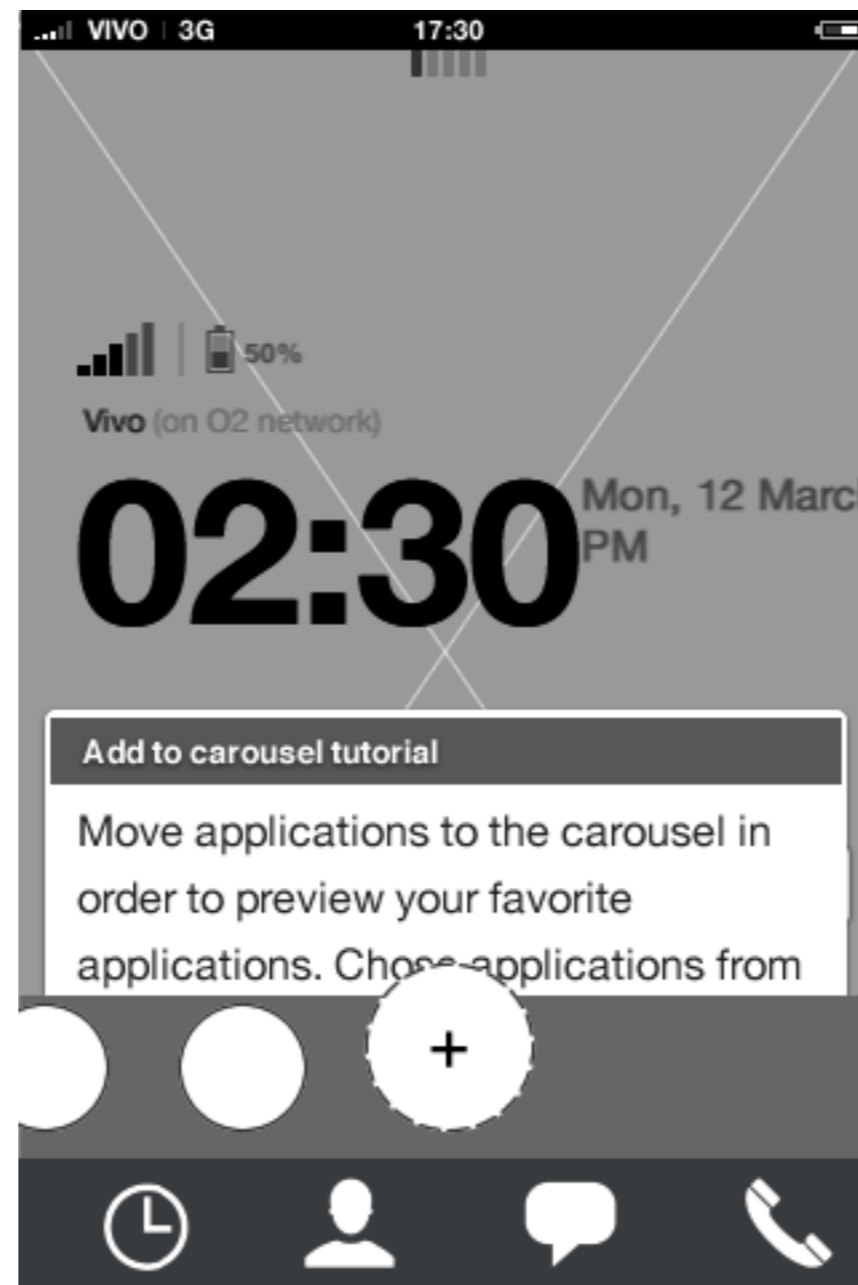
**Homescreen: Add to carousel tutorial**  
When the tutorial icon gets in focus, it behaves as any other focused application in the carousel.

# Home screen

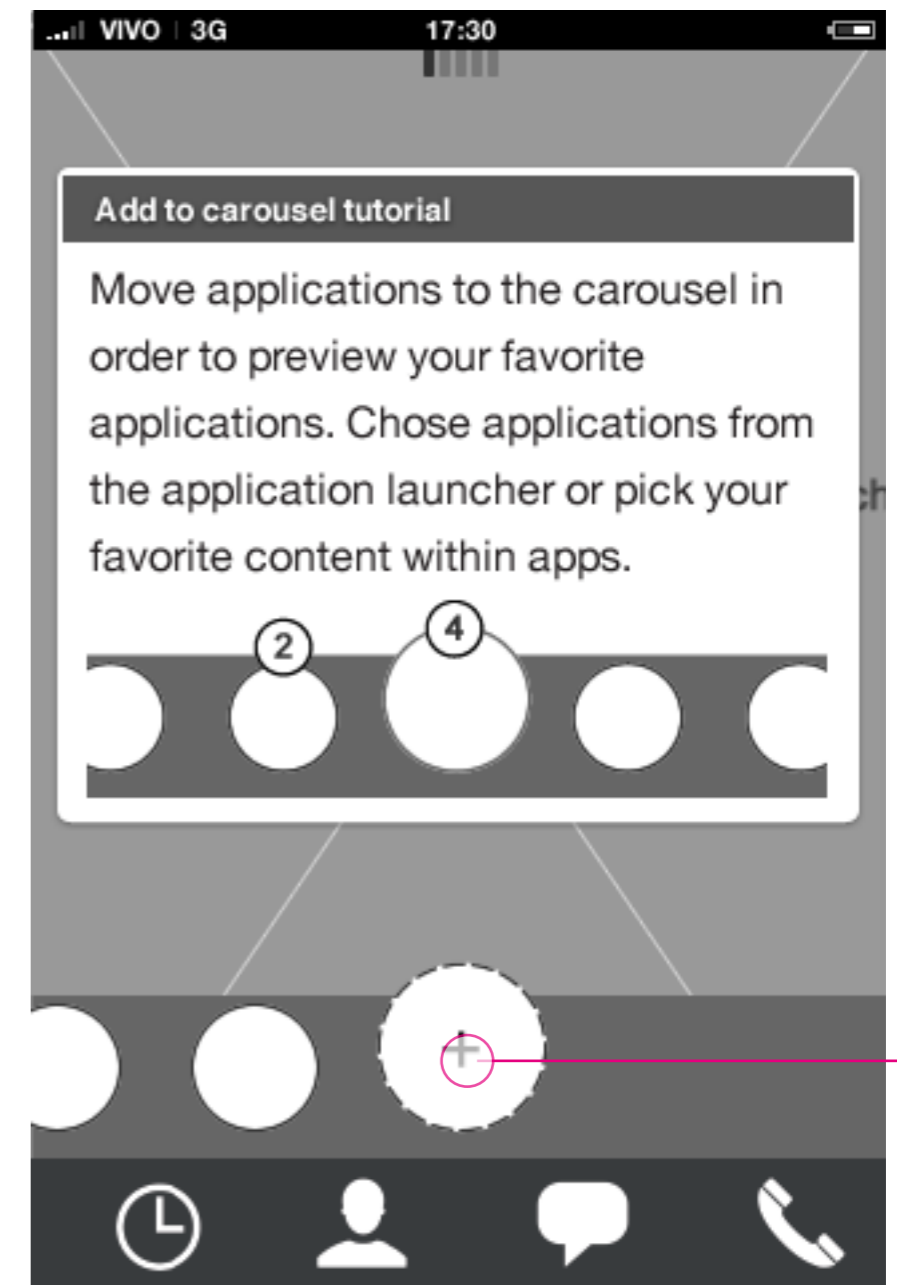
## Carousel: Tutorial



**Homescreen: Add to carousel tutorial**  
By tapping the title of the tutorial icon, the preview expands.

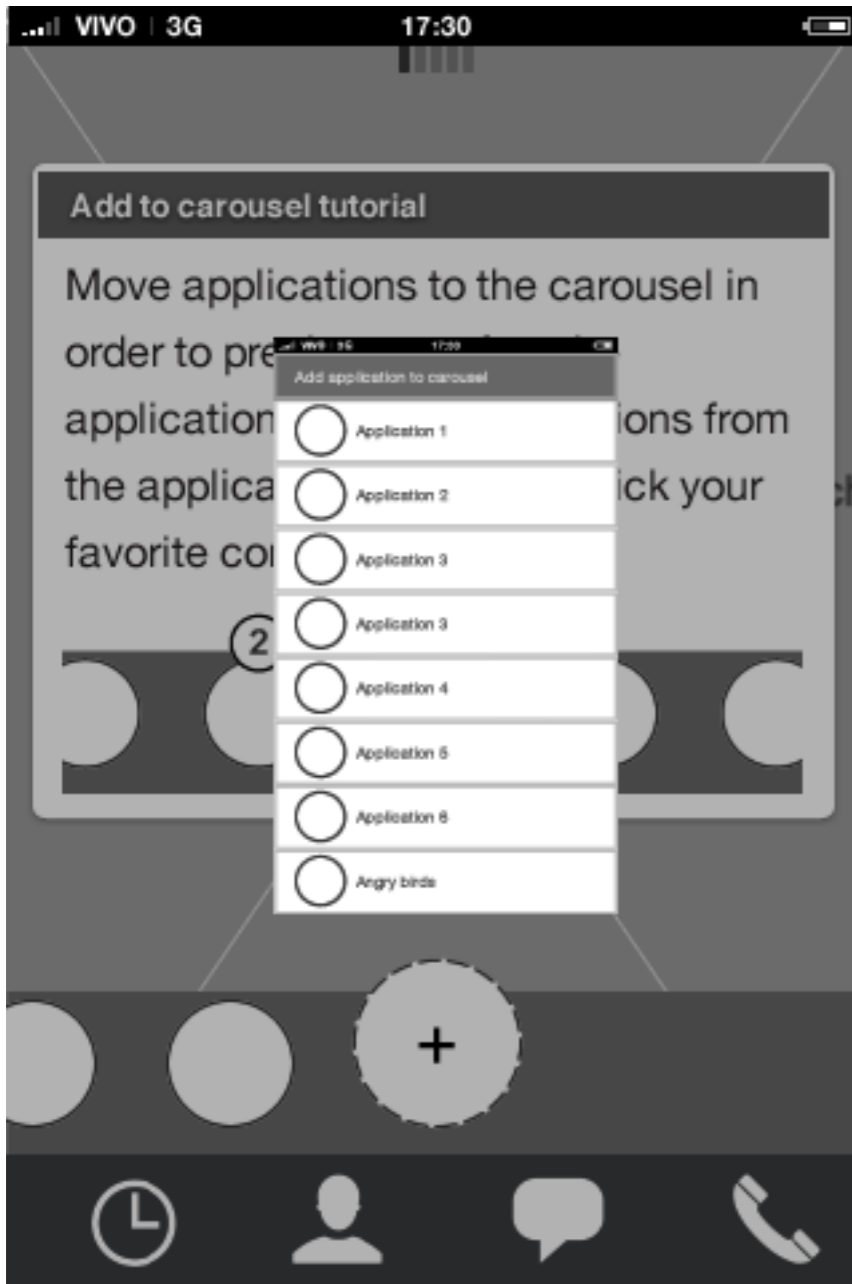


**Homescreen: Add to carousel tutorial**  
Preview animation

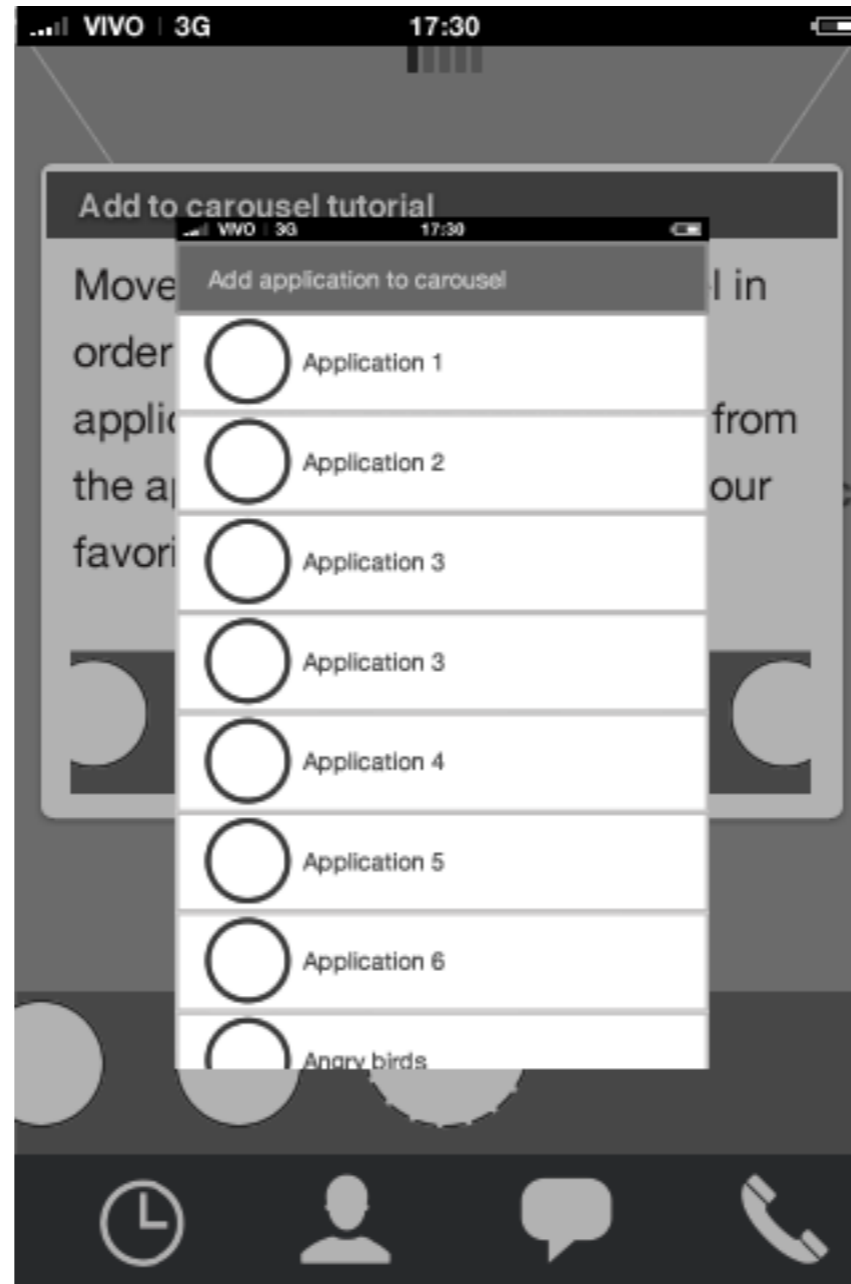


**Homescreen: Add to carousel tutorial**  
In the preview, the user will get a static explanation on how the carousel works (text TBD). By tapping the application icon (can be done without the preview expanded), the user starts add to carousel flow.

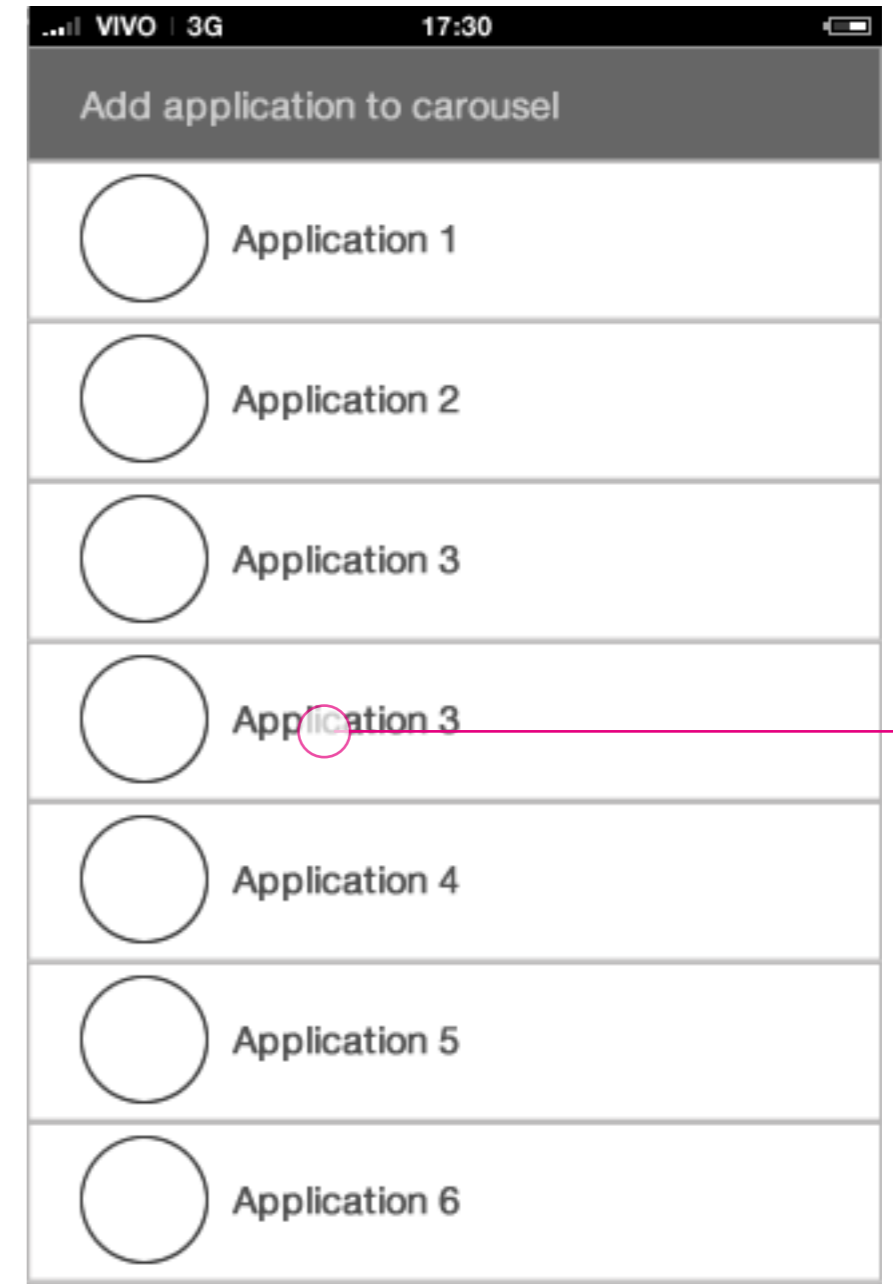
# Home screen Carousel: Tutorial



Homescreen: Add to carousel flow  
App picker animates in



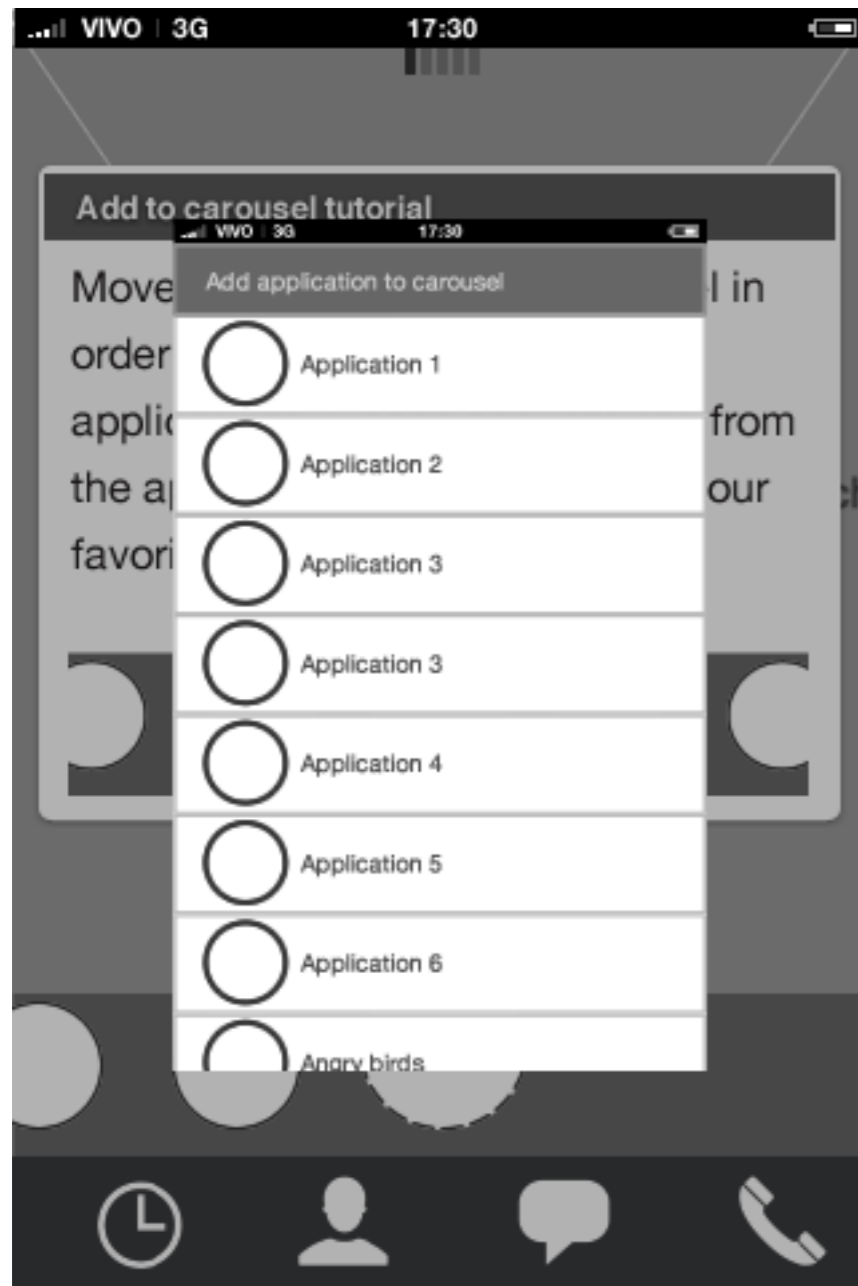
Homescreen: Add to carousel flow  
App picker animates in



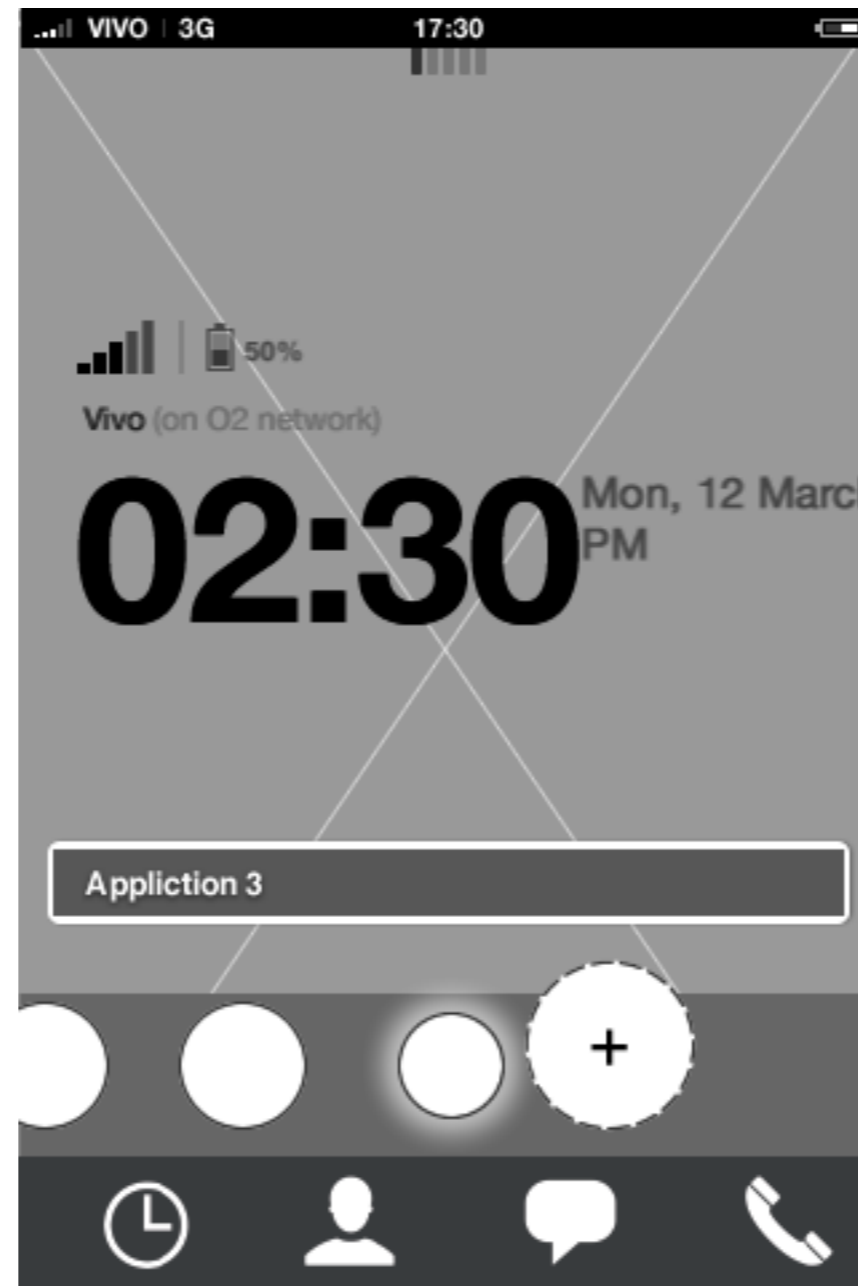
Homescreen: Add to carousel flow  
App picker



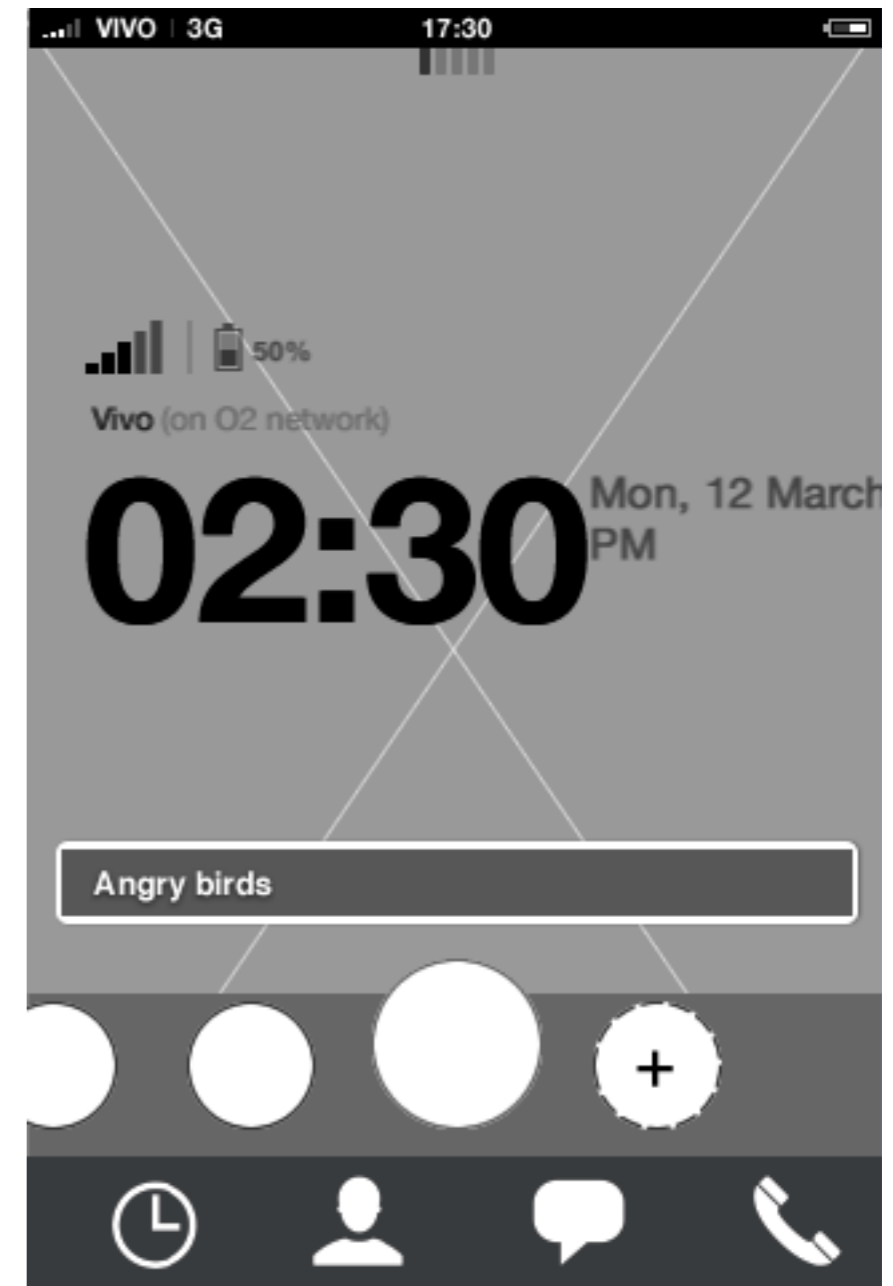
# Home screen Carousel: Tutorial



**Homescreen: Add to carousel flow**  
App picker animates away



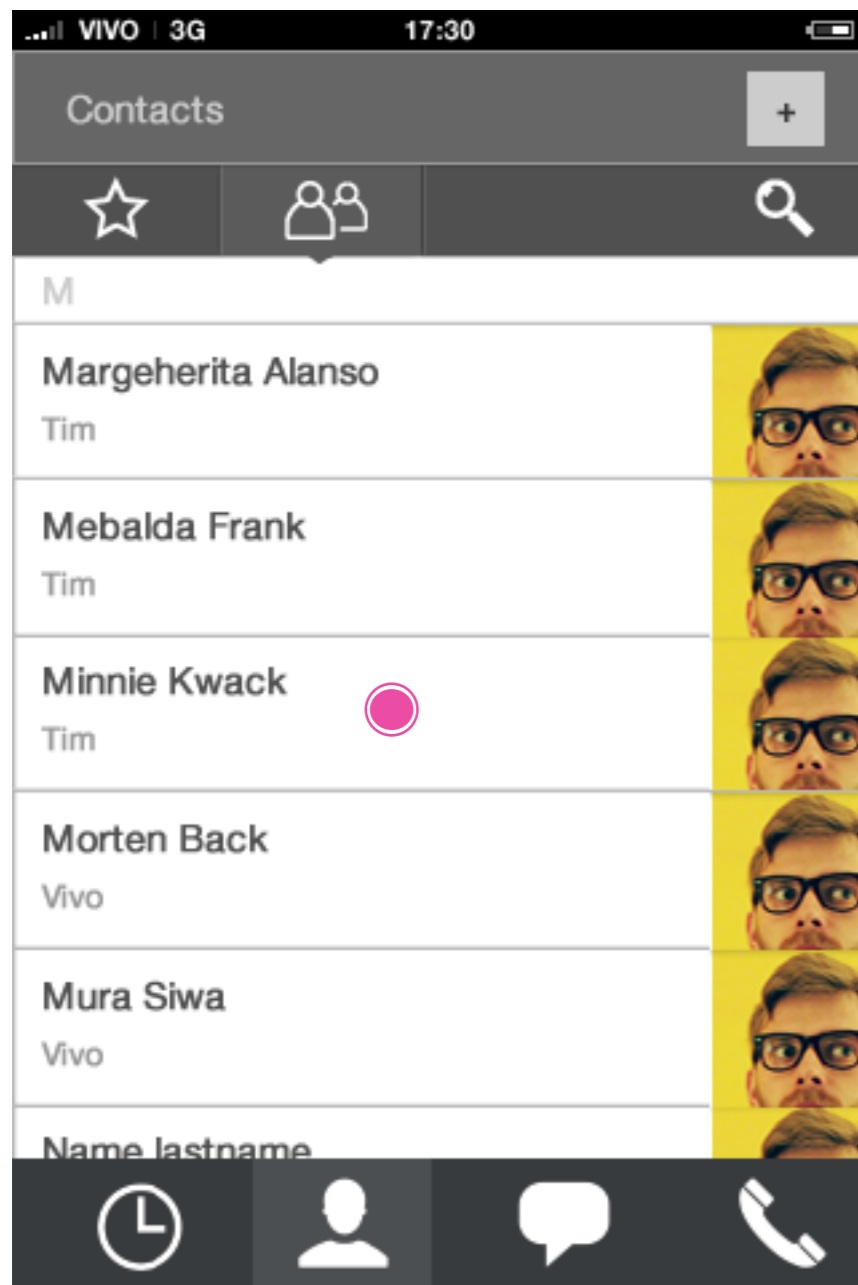
**Homescreen: Add to carousel flow**  
New app appears between last carousel app and the tutorial icon.



**Homescreen: Add to carousel flow**  
Once adding is done, the application gets focus and tooltip title displays app title.

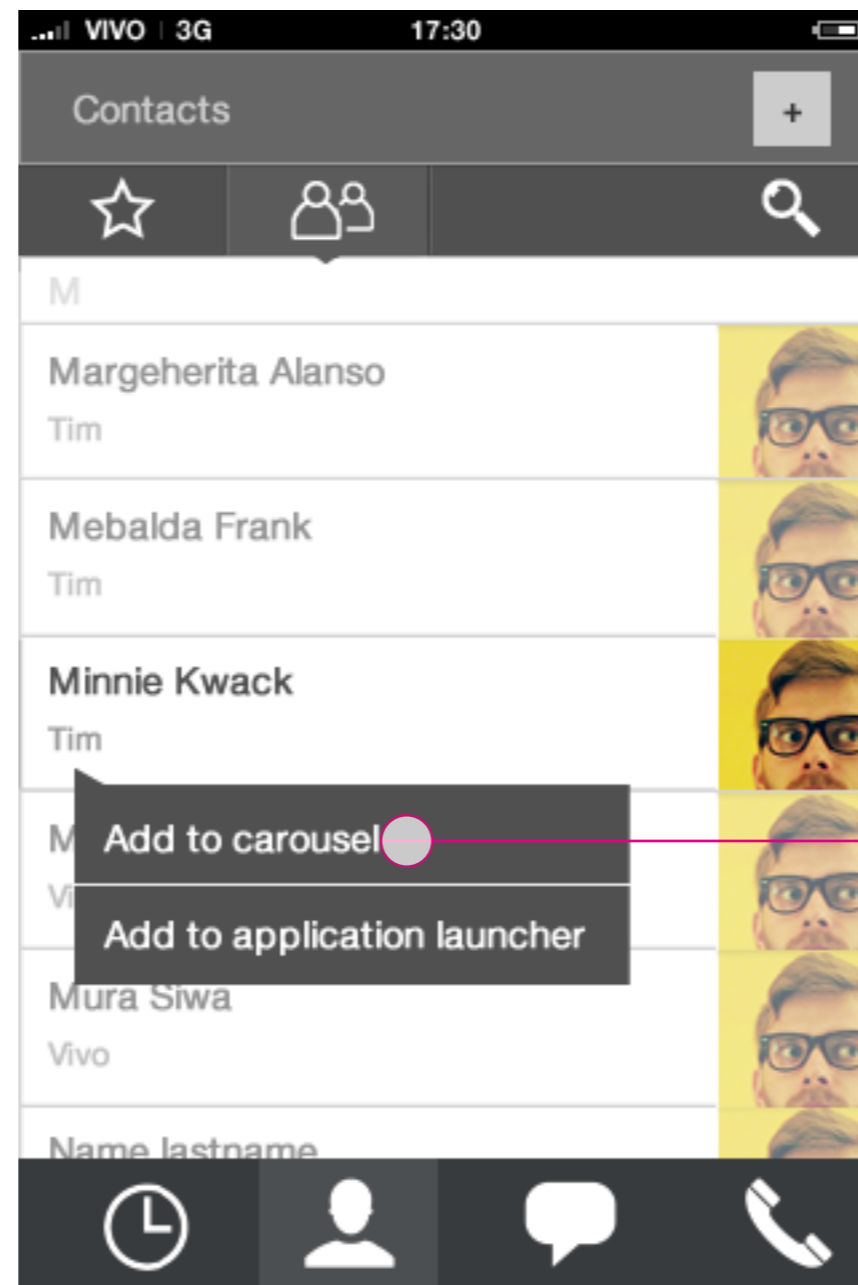
# Home screen

## Carousel: add contact to carousel



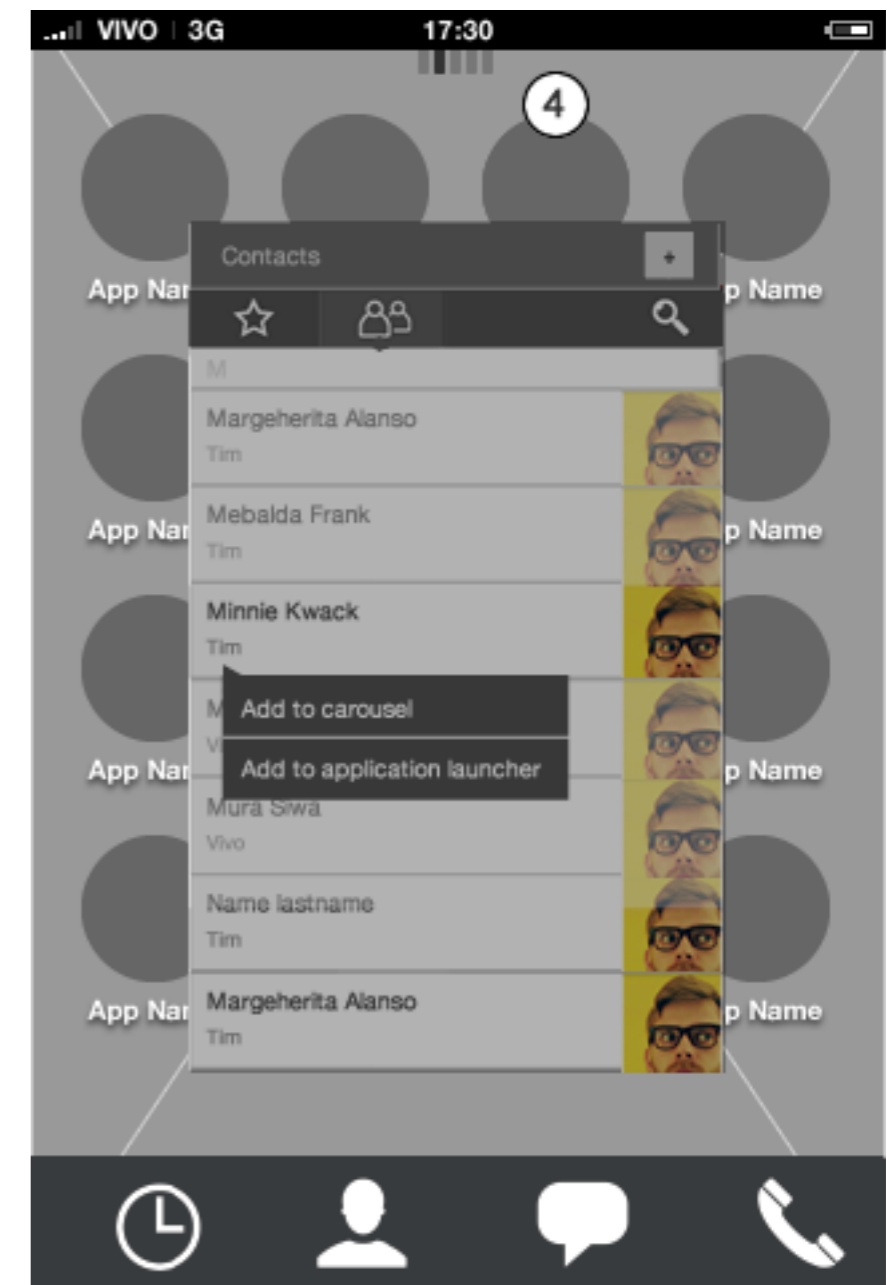
### Contacts

By long pressing a contact, contextual actions are shown letting the user add a contact to the carousel or the application launcher.



### Contacts: contextual menu

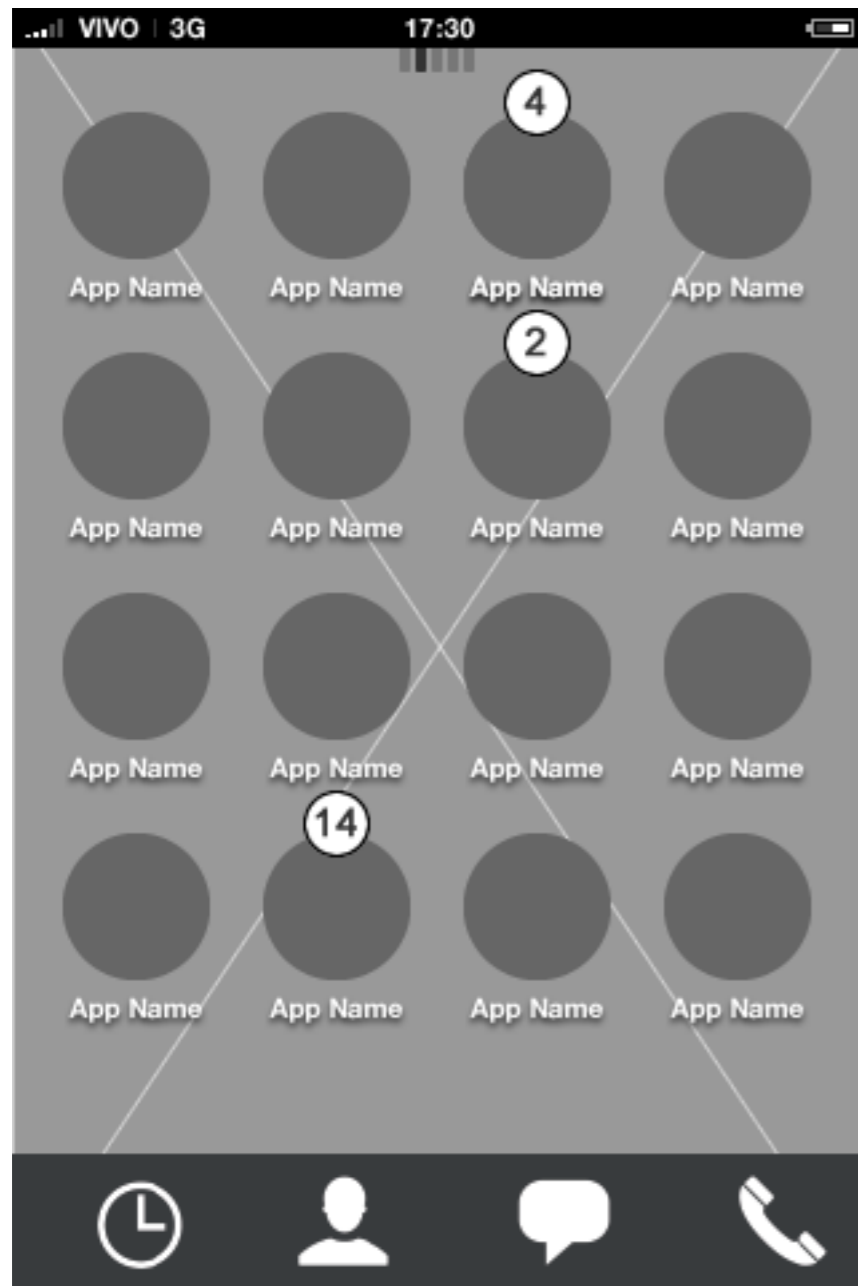
User taps add to carousel.



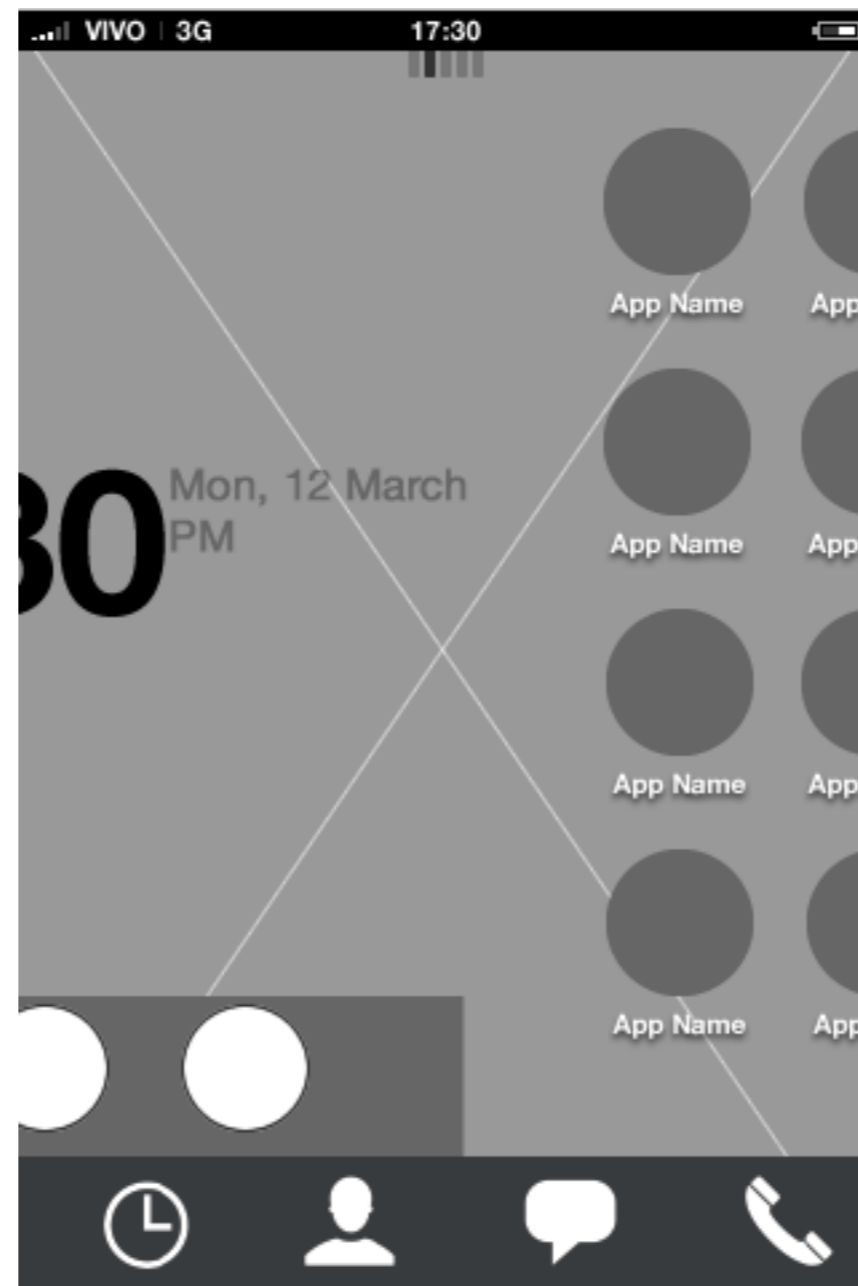
### Homescreen: Add to carousel animation

# Home screen

## Carousel: add contact to carousel



Homescreen: Add to carousel animation



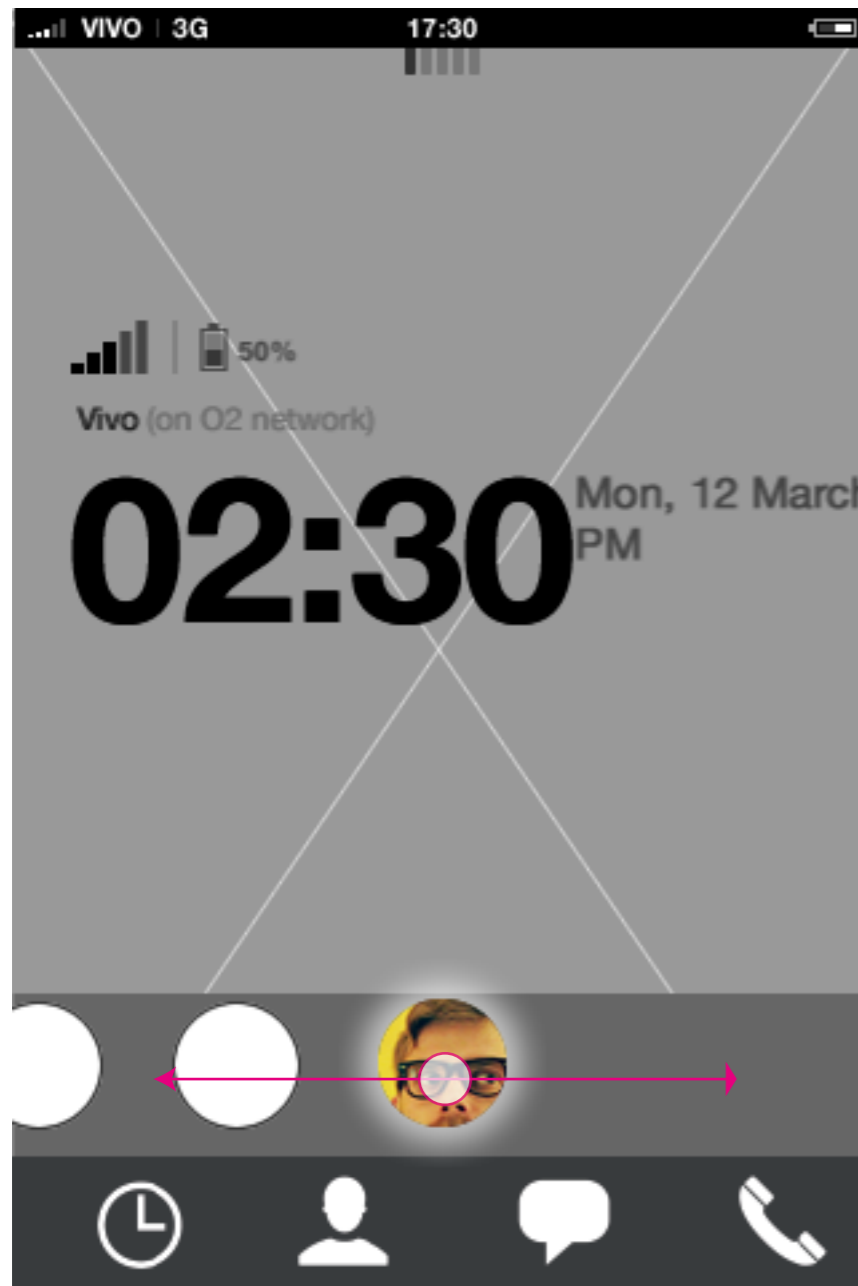
Homescreen: Add to carousel animation



Homescreen: Add to carousel animation

# Home screen

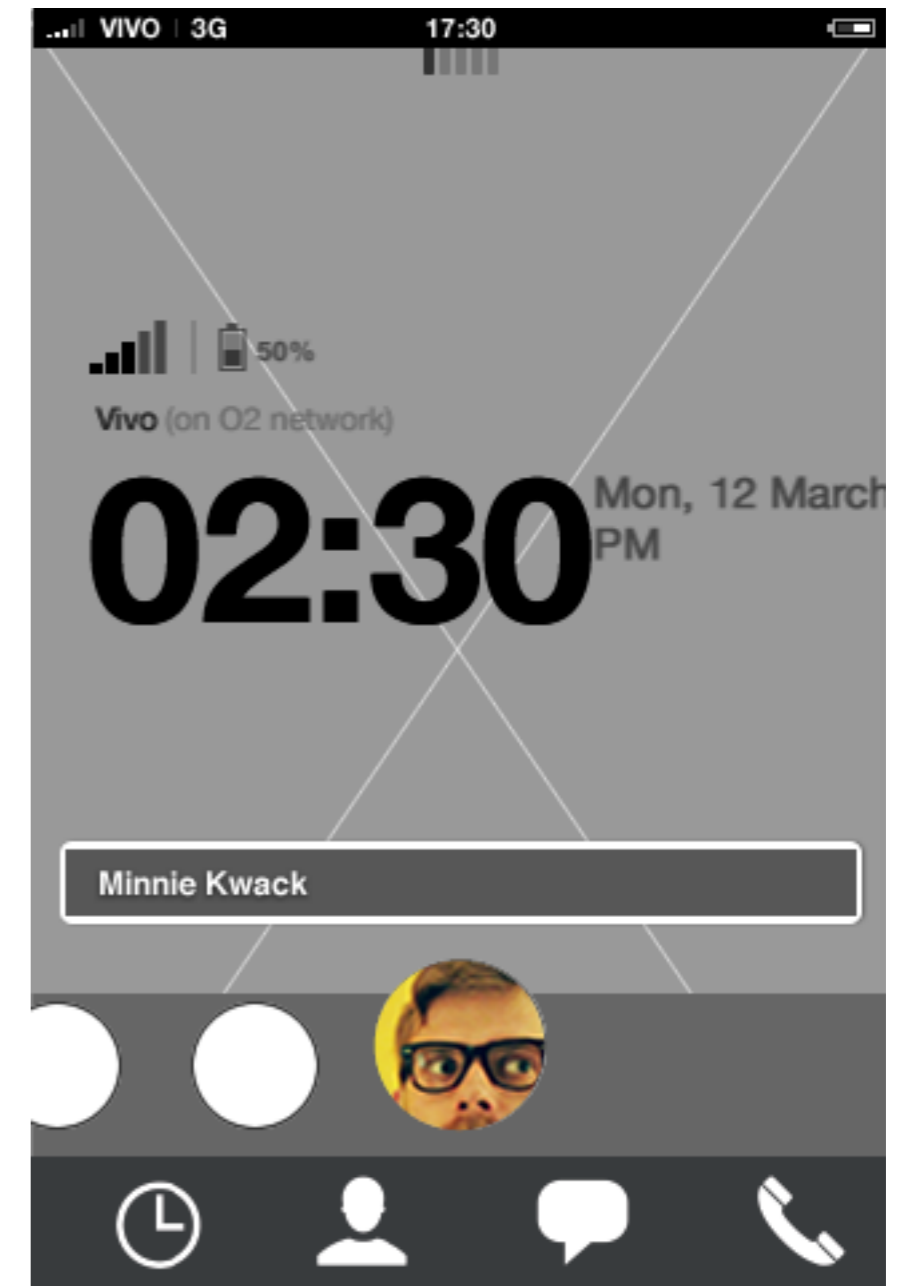
## Carousel: add contact to carousel



Homescreen: Add to carousel animation



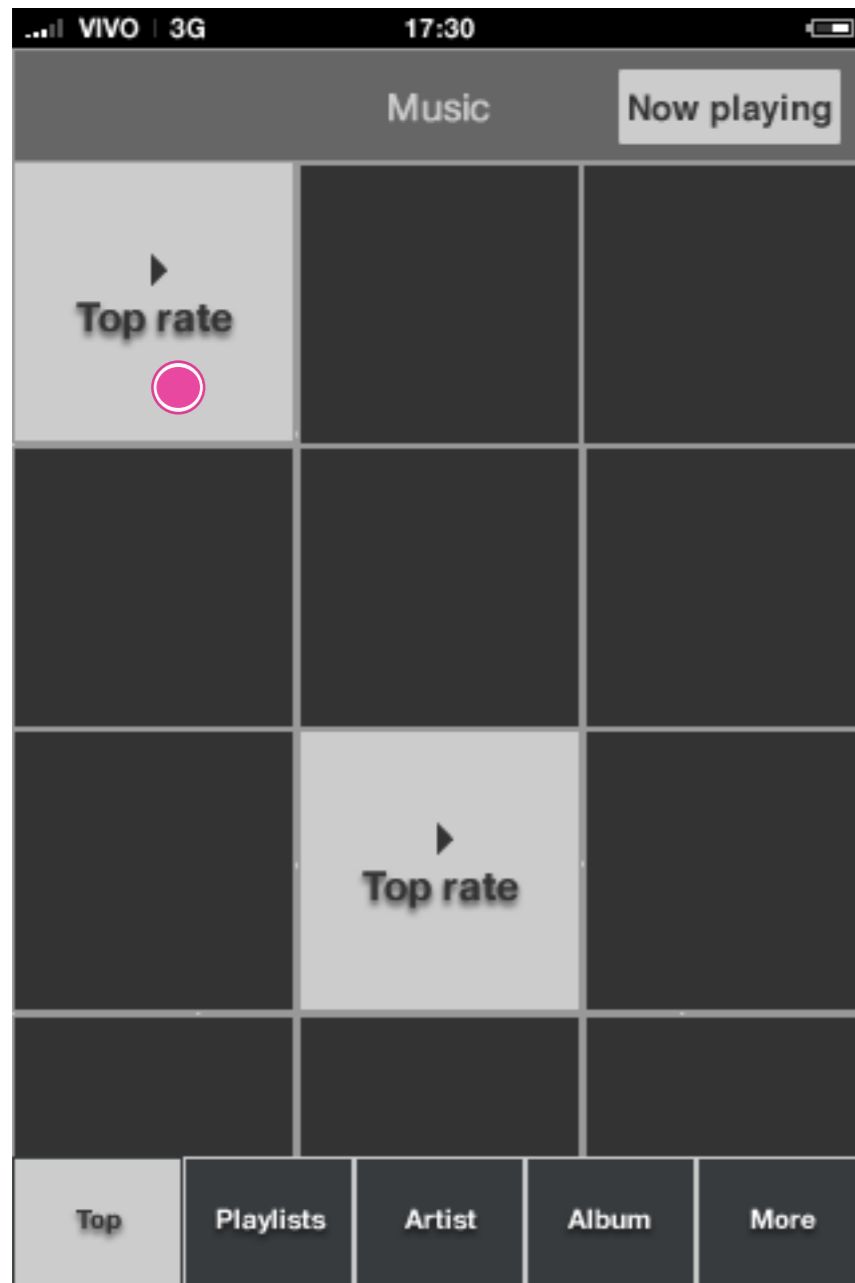
Homescreen: Add to carousel animation



Homescreen: Add to carousel animation  
When the animation finish, the added contact is in focus and the interactive tool tip appears.

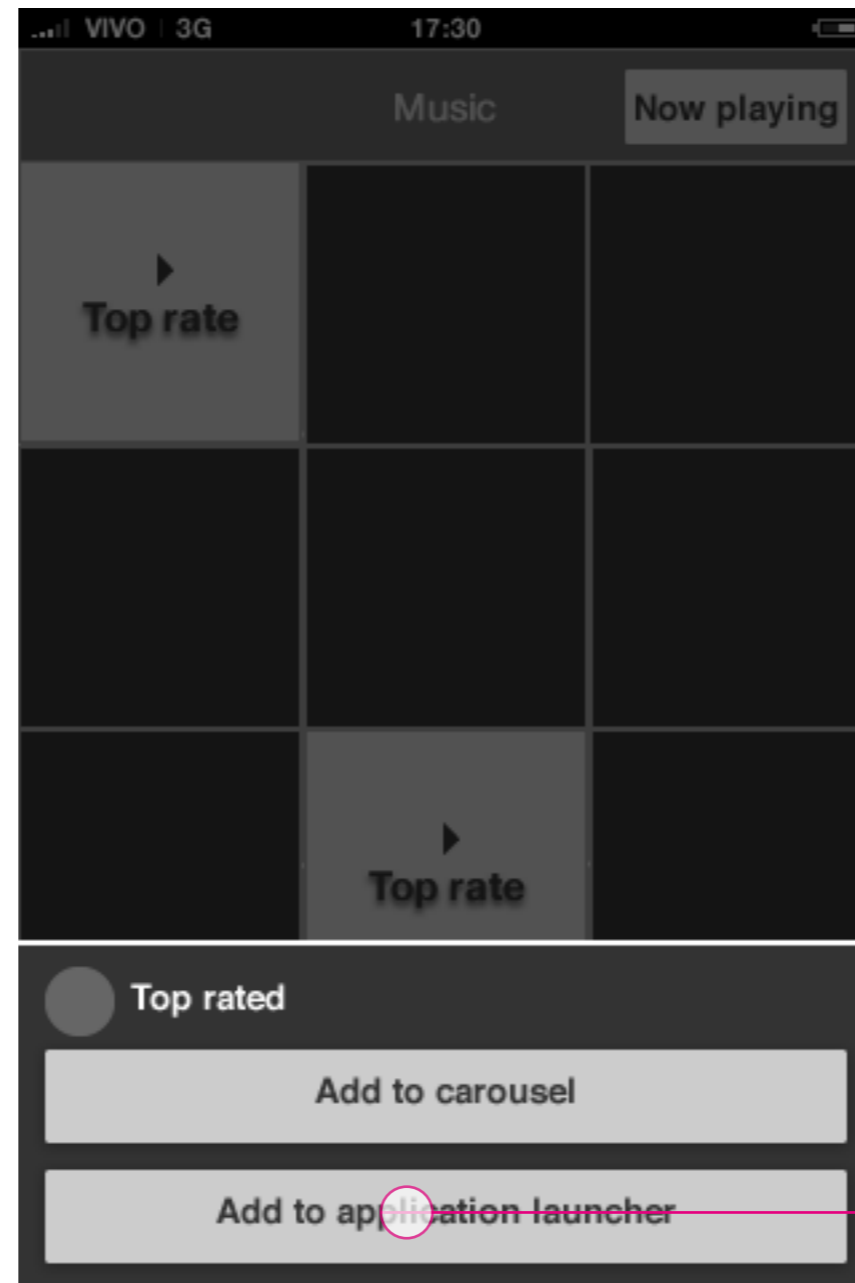
# Home screen

## Carousel: add playlist to application launcher



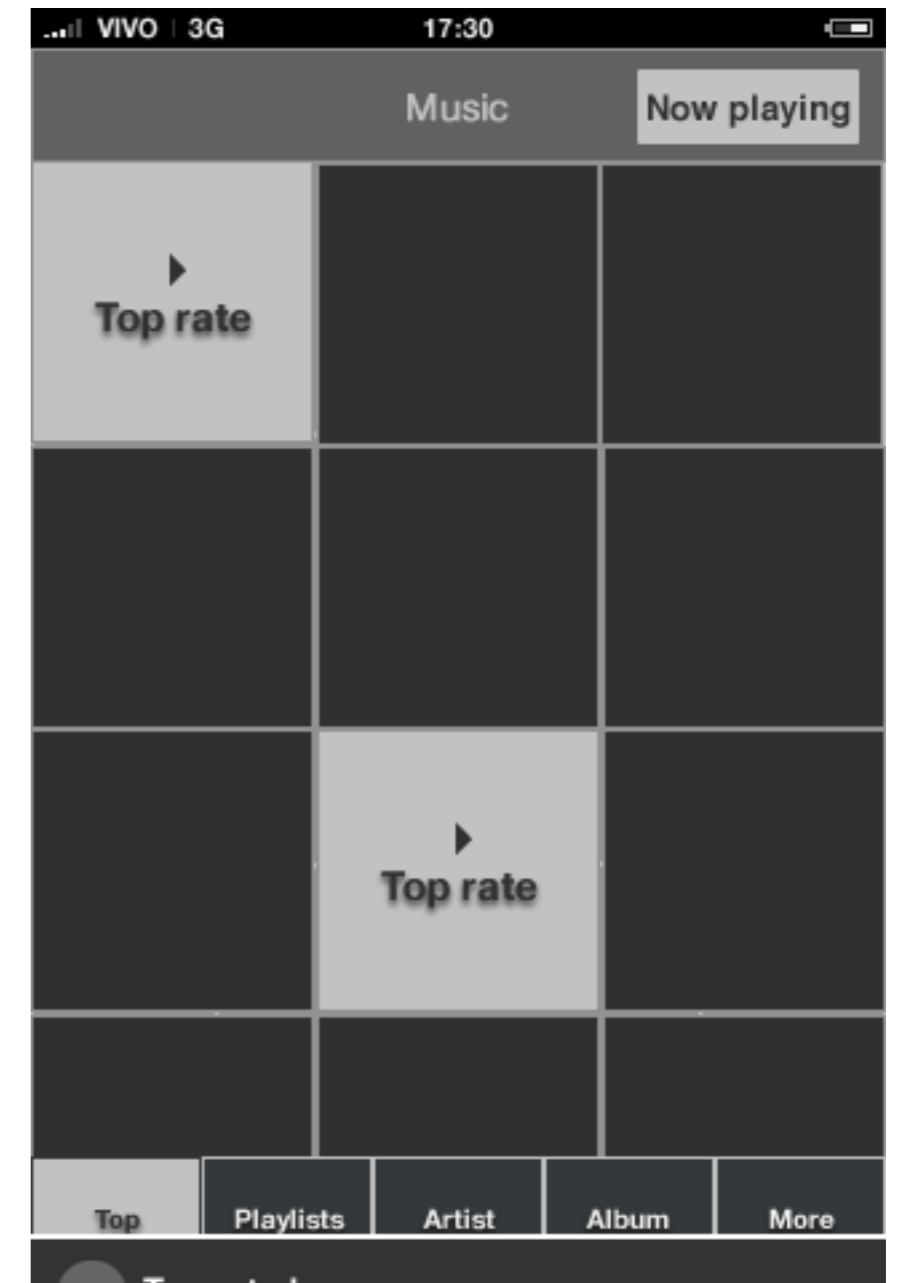
### Music player

By long pressing content, the user reveals contextual actions.



### Music player: contextual menu

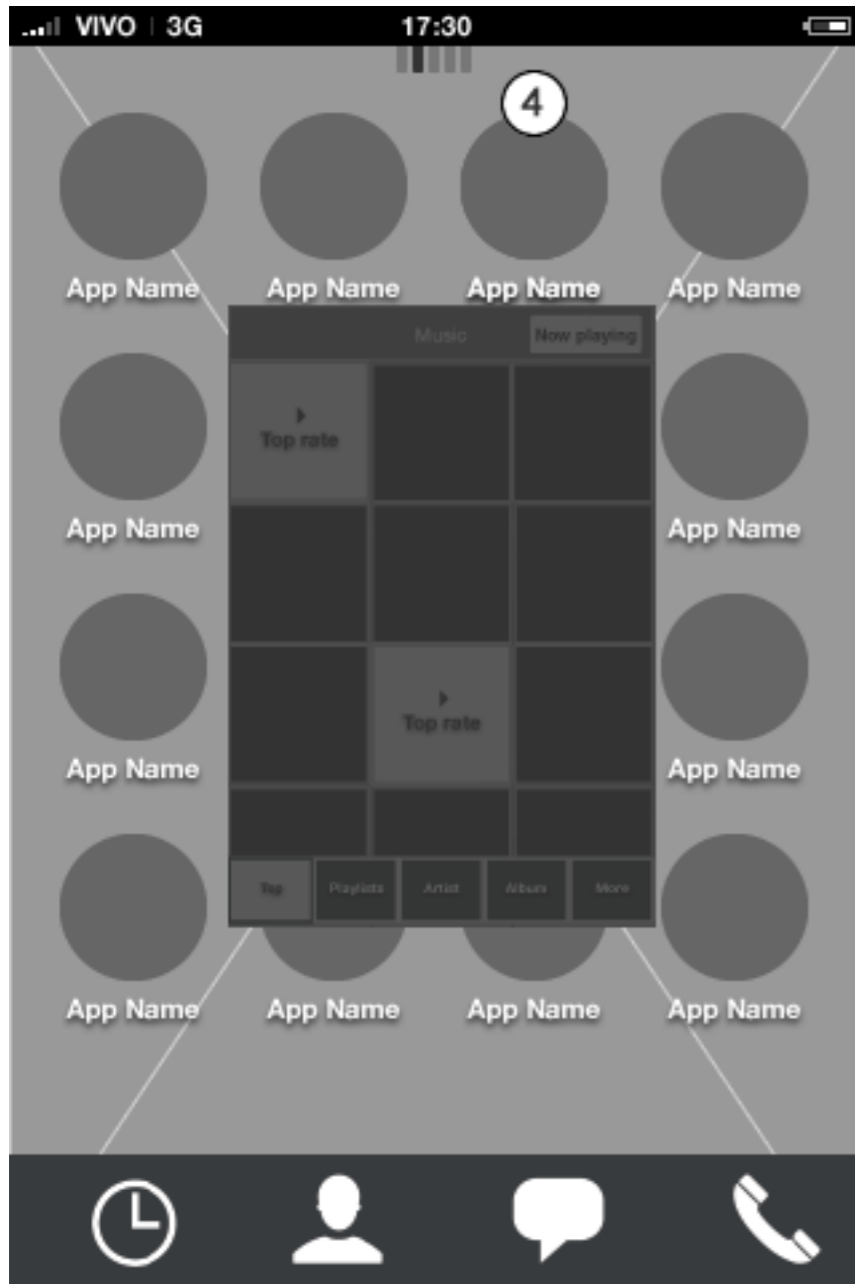
User taps add to application launcher



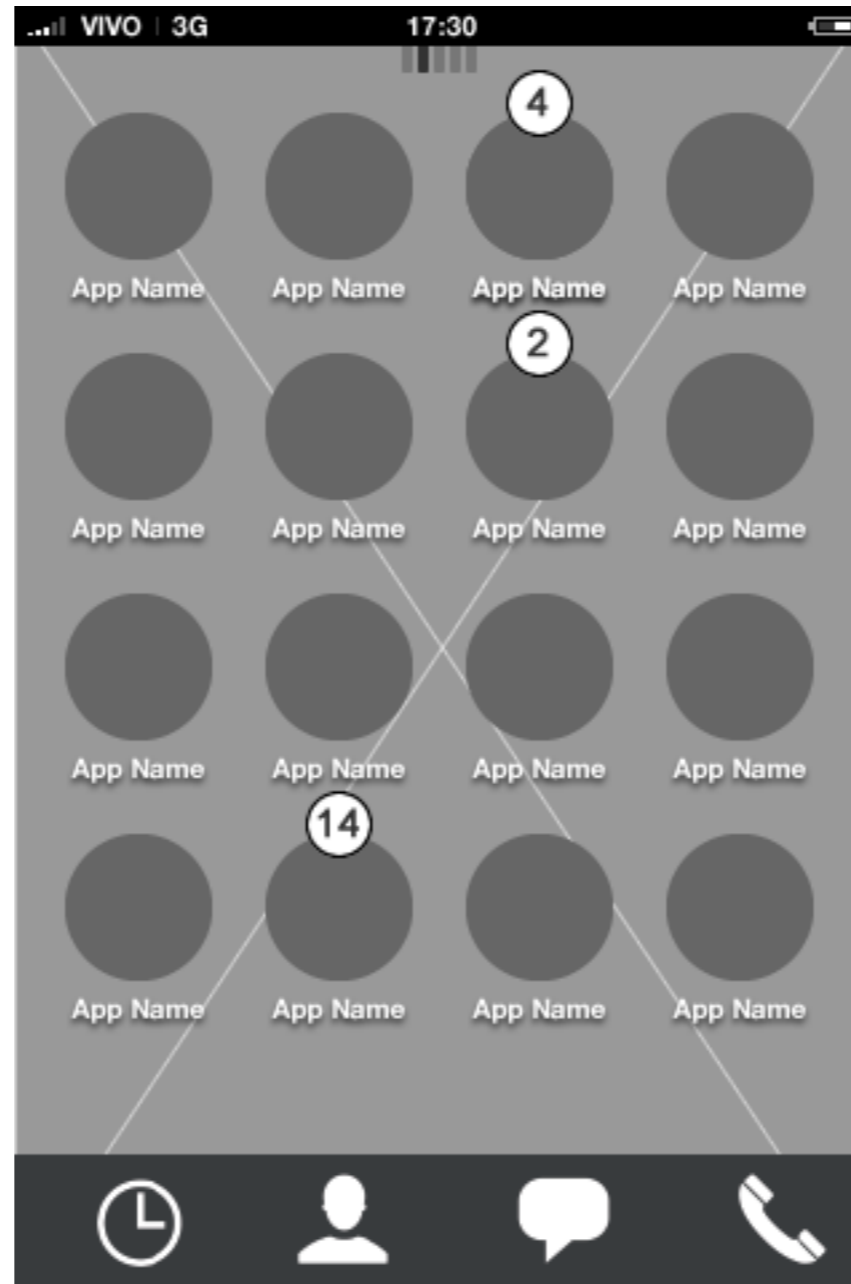
### Homescreen: Add to application launcher animation

# Home screen

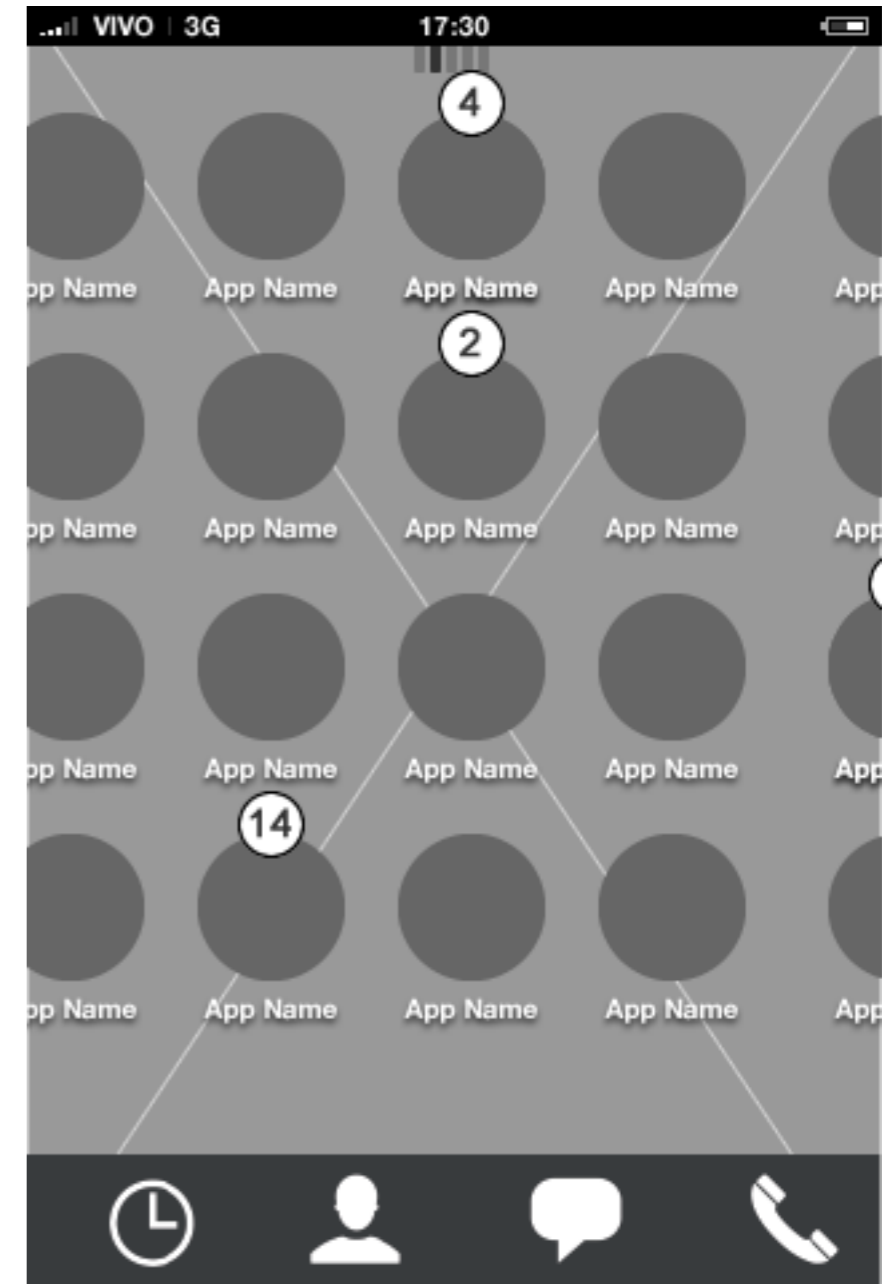
## Carousel: add playlist to application launcher



Homescreen: Add to application launcher animation



Homescreen: Add to application launcher animation



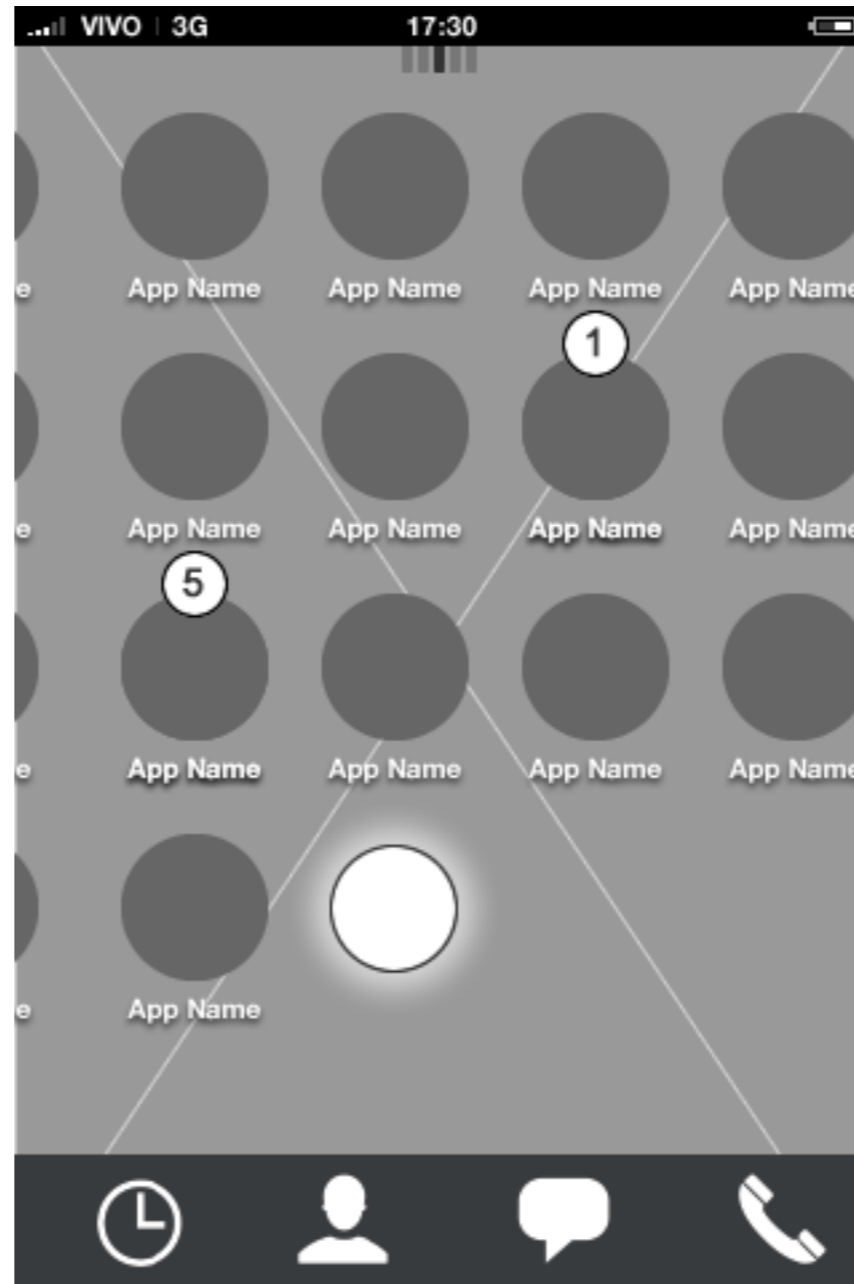
Homescreen: Add to application launcher animation

# Home screen

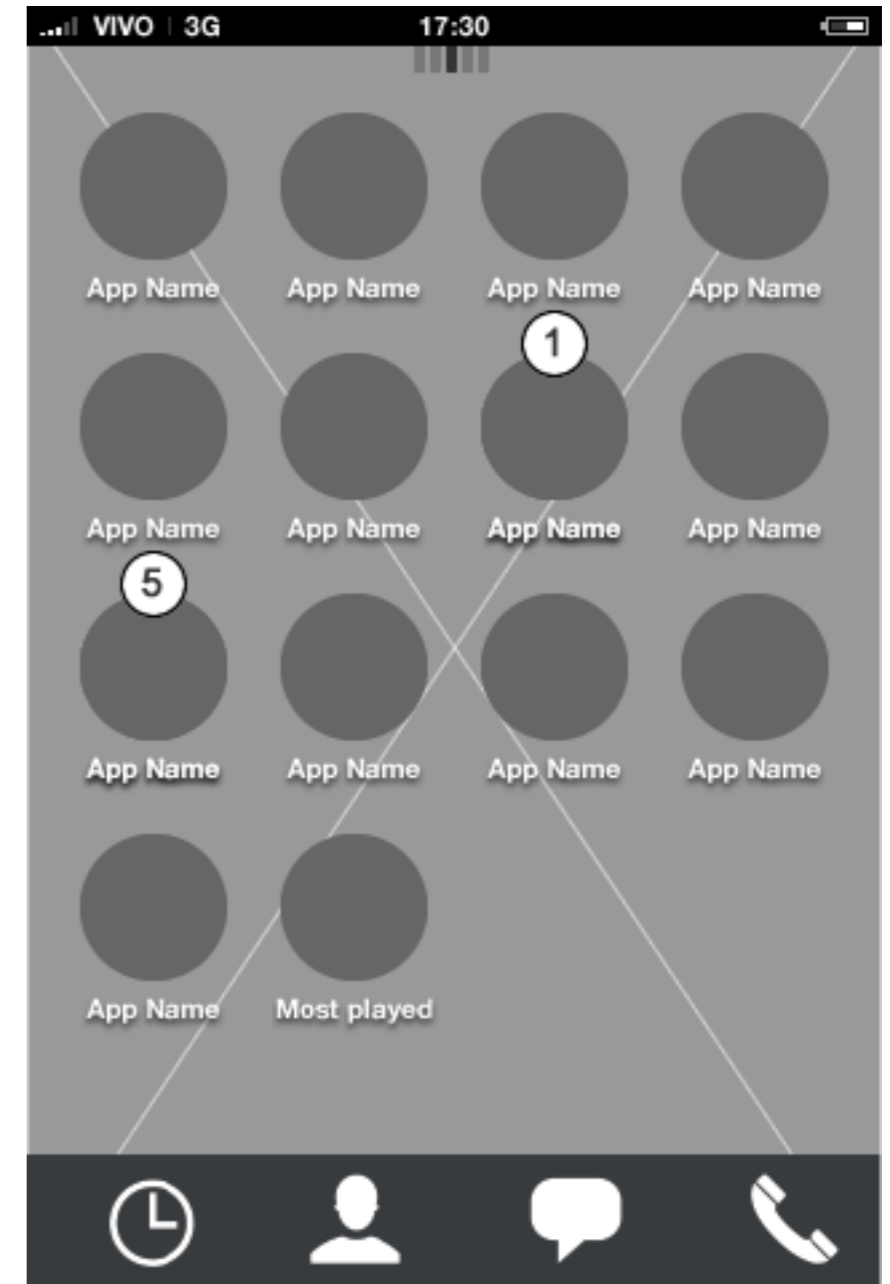
## Carousel: add playlist to application launcher



Homescreen: Add to application launcher animation



Homescreen: Add to application launcher animation



Homescreen: Add to application launcher animation