

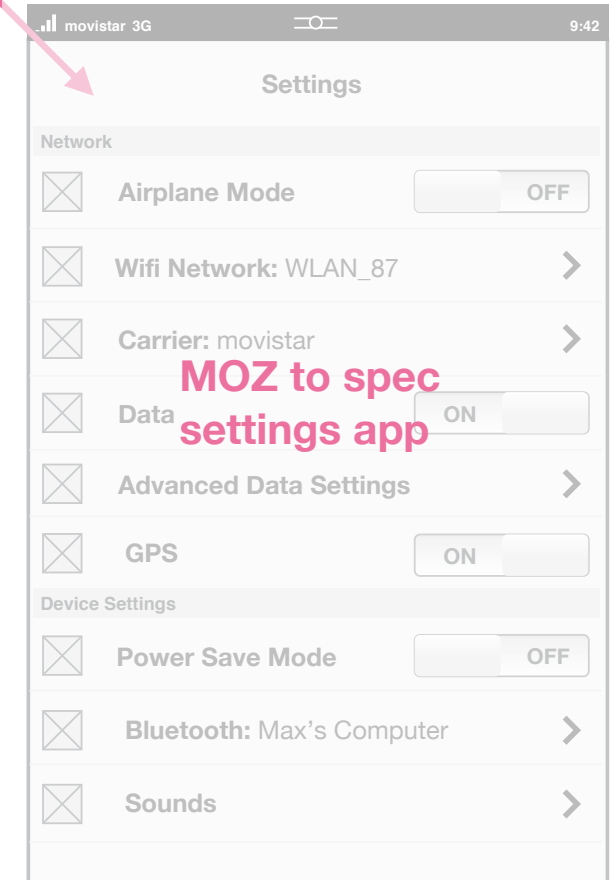
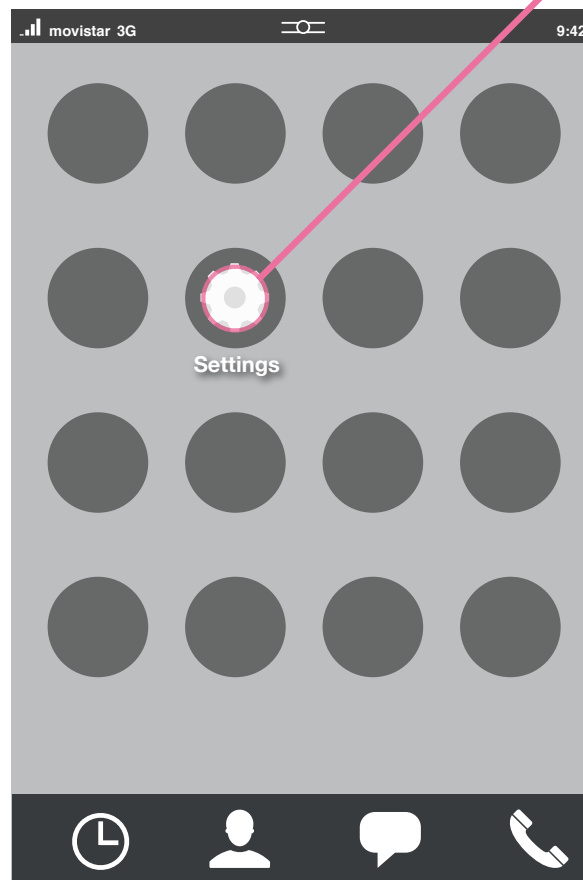
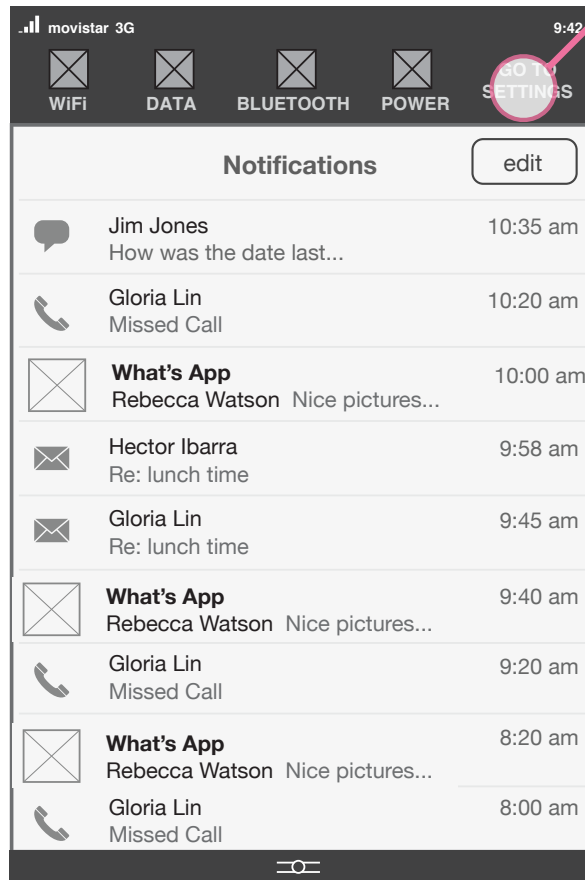
Settings - title?

TEF Recommendations..

Access to General Settings Settings

Settings Access

Accessed both from the Quick Settings area above the Notification Center, and from an Settings App icon in the grid.



Settings app access in Quick Settings

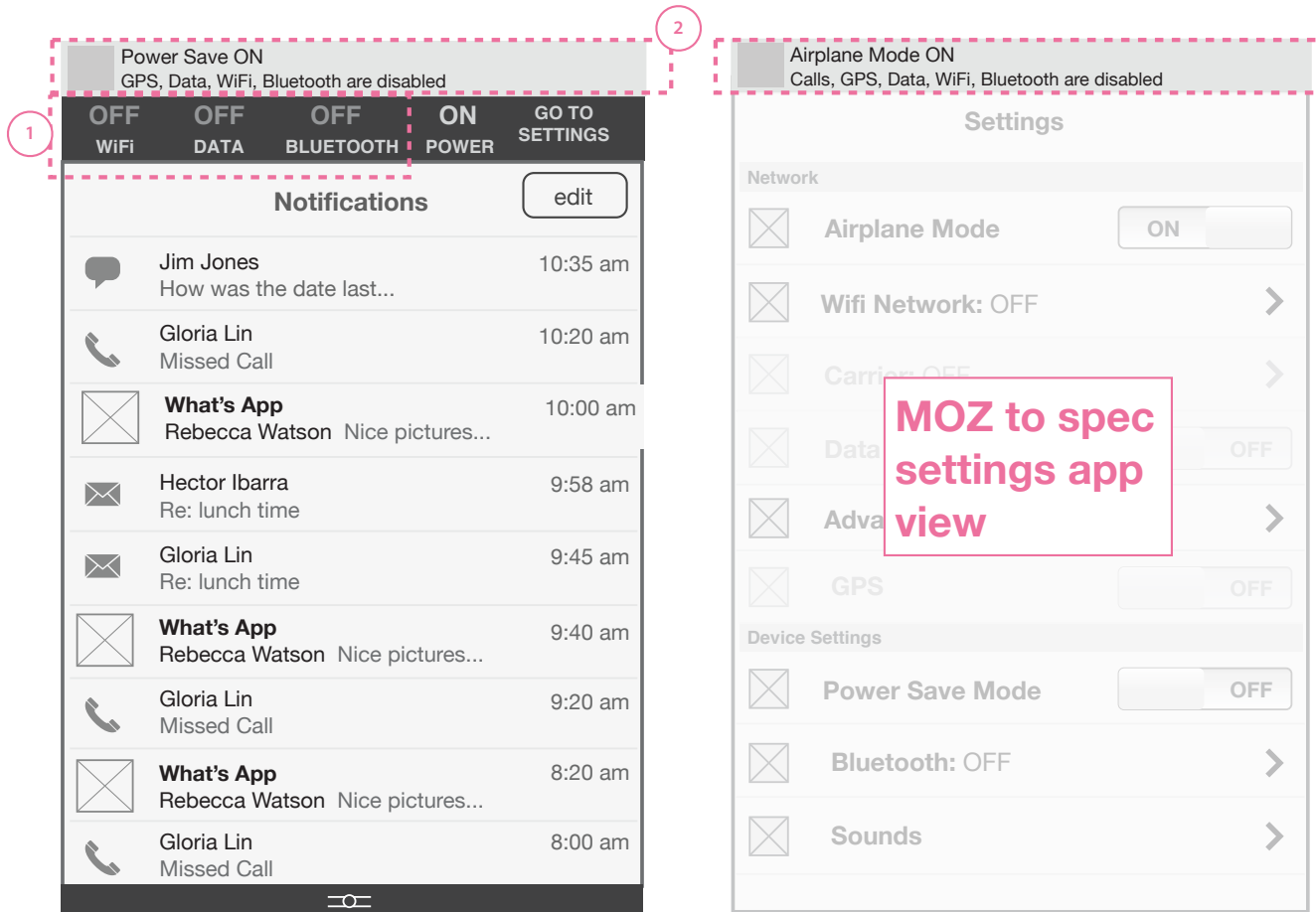
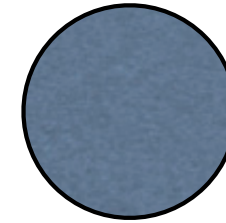


Settings in application grid



General Settings view

Mode Change Behavior Settings



Power Save Mode

Power save mode turns multiple settings off simultaneously to extend the life of the battery:

Data OFF

WiFi OFF

Bluetooth OFF

GPS OFF

When a user turns mode ON

1. All the above settings automatically move to the OFF position and are greyed out.
2. A passive notification appears with setting implications in the Status Bar.
3. When passive notification disappears, the network connectivity, data icon, wifi icon, bluetooth icon all disappear and Battery line visual is altered.

When a user turns mode OFF

All above settings except Bluetooth and Data move to the ON position.

Airplane Mode

Airplane Mode turns off the following settings simultaneously:

Data OFF

WiFi OFF

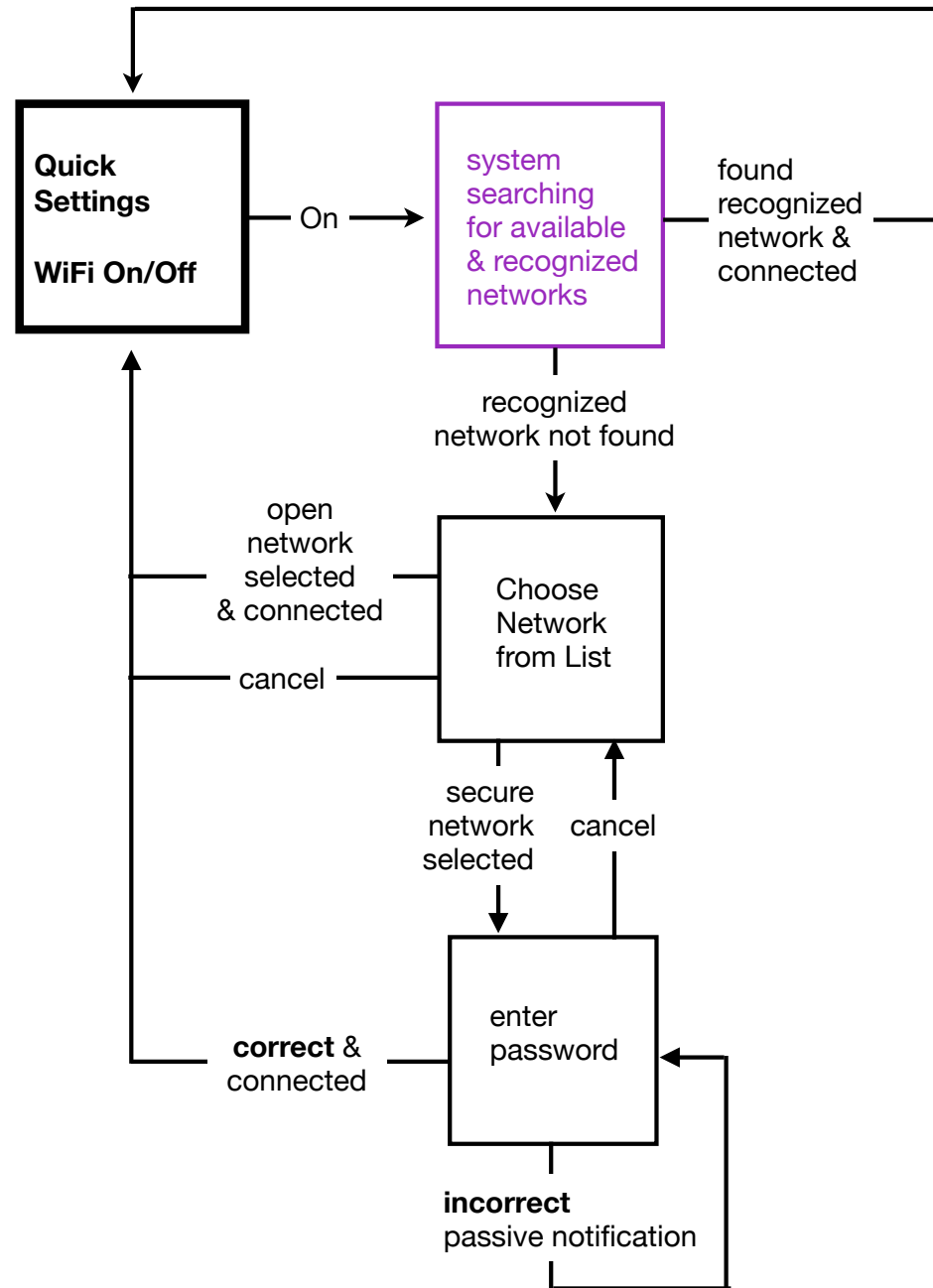
Bluetooth OFF

GPS OFF

Carrier Connection OFF

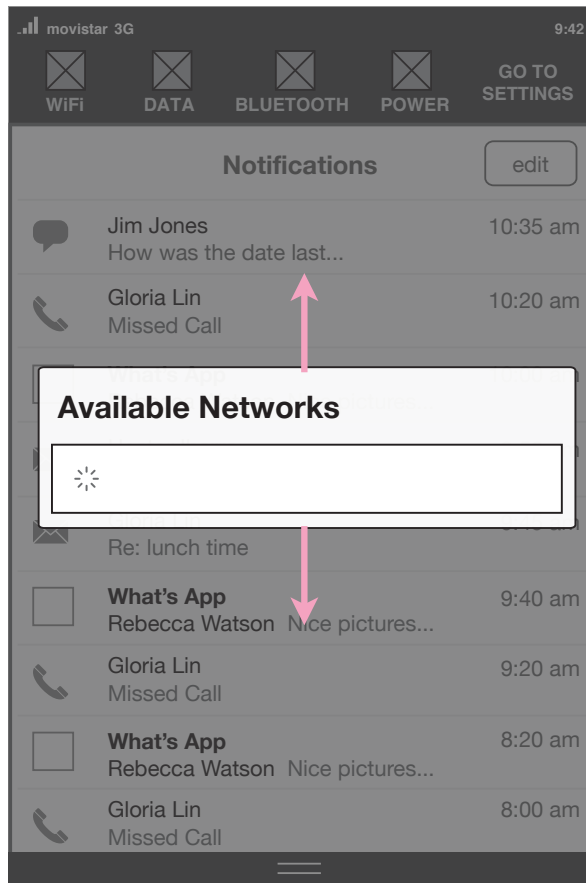
Flow for Wifi Connection from pop-up window

WiFi Setting

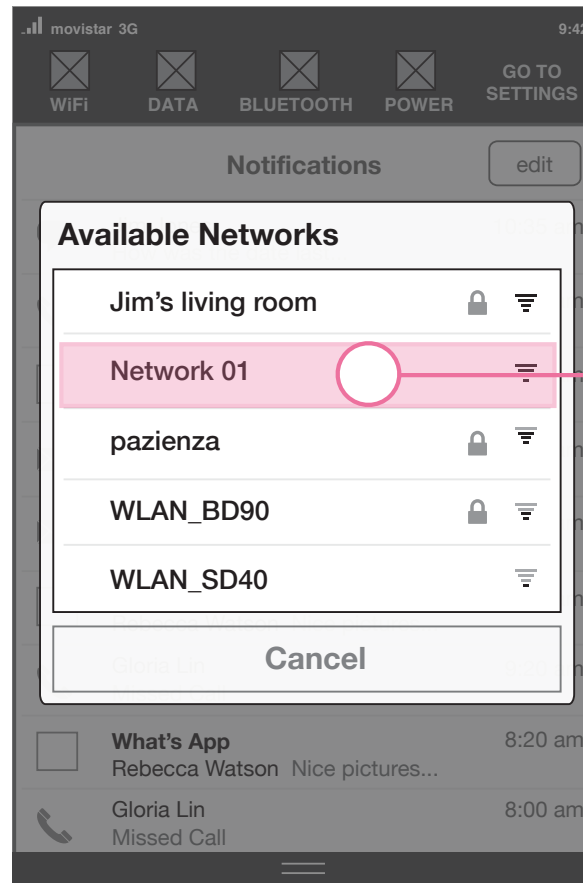


List Window & Connection Process Window

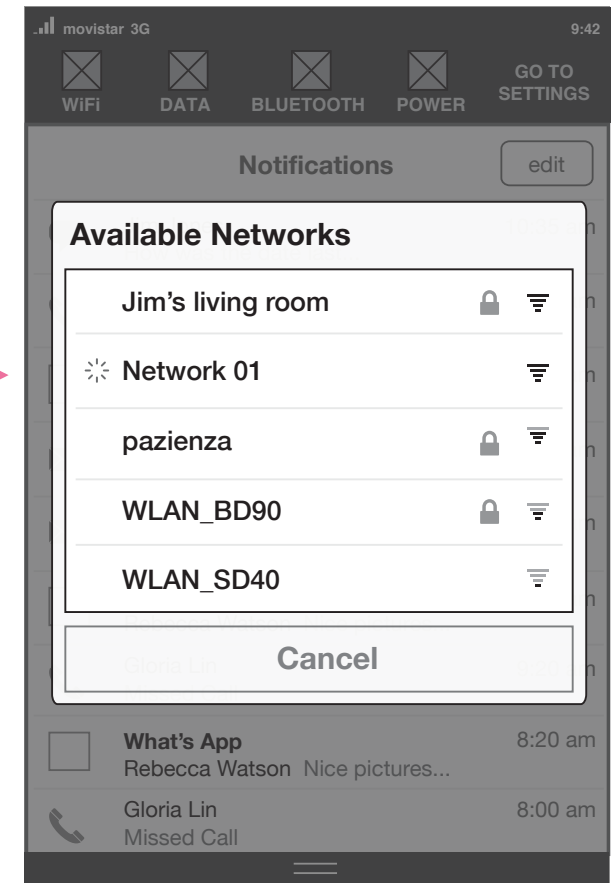
WiFi ON/OFF



System searching for available networks



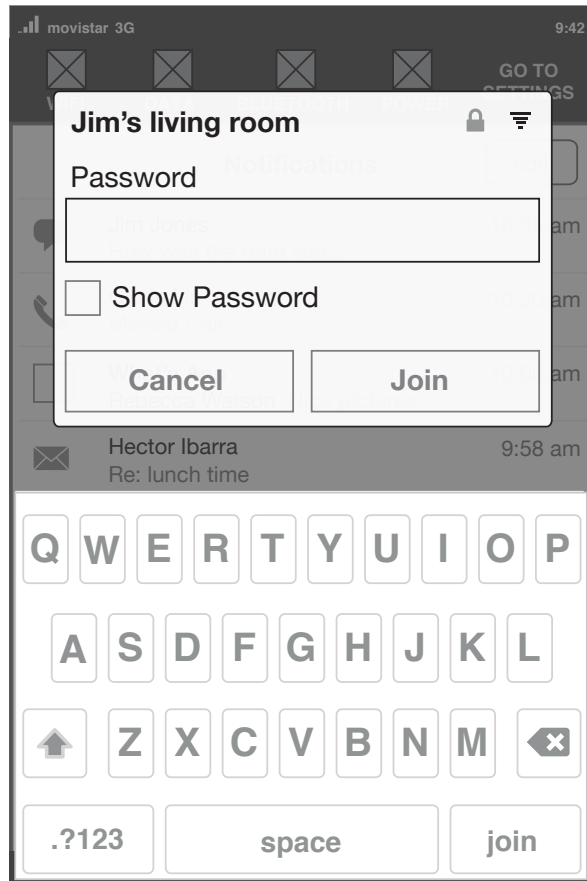
List of available networks ordered by connection strengths.



Device connecting to network

Password Entry

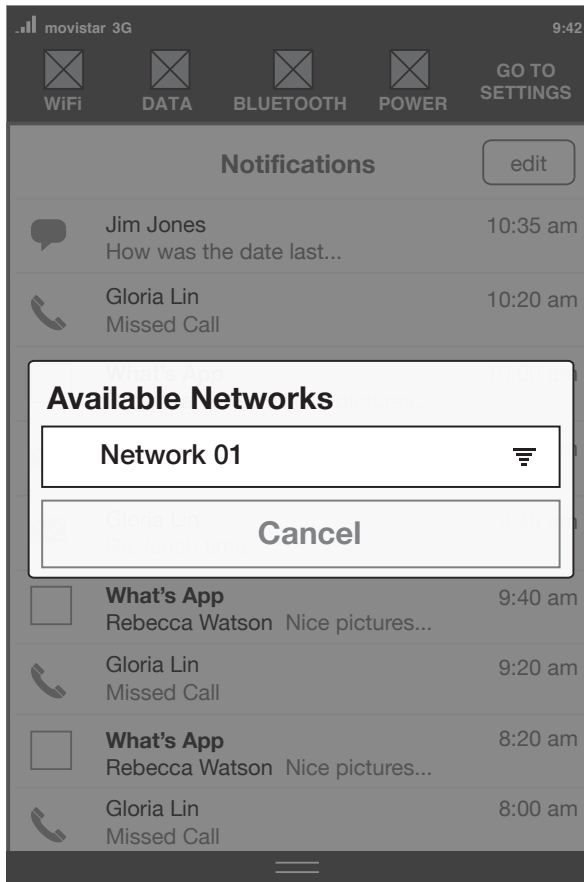
WiFi ON/OFF



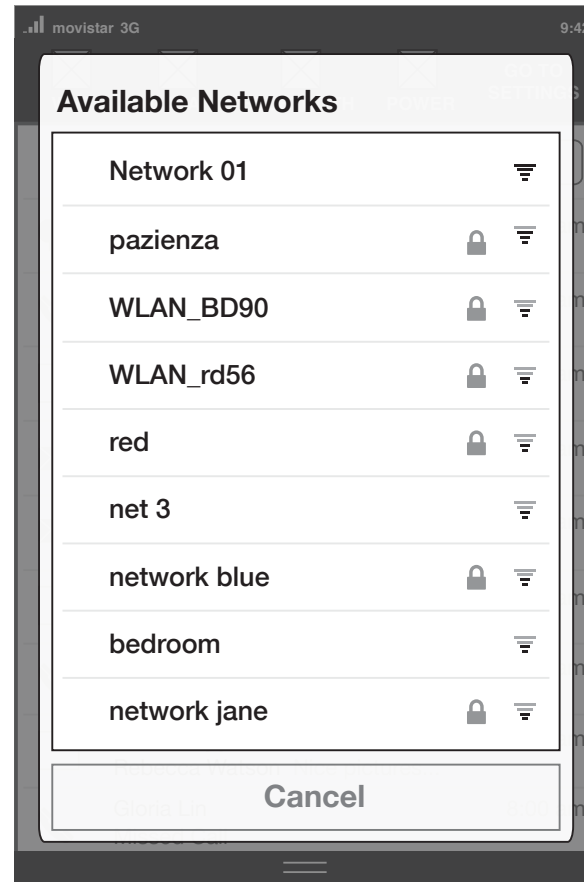
Network Password Entry
Keyboard slides in from below

List Behavior

WiFi ON/OFF



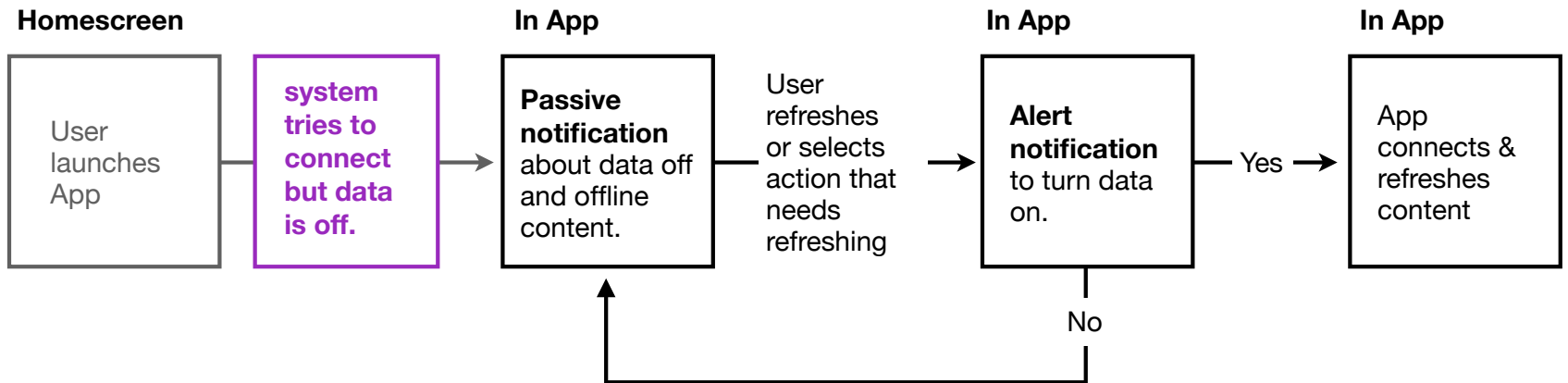
Short list - 1 item



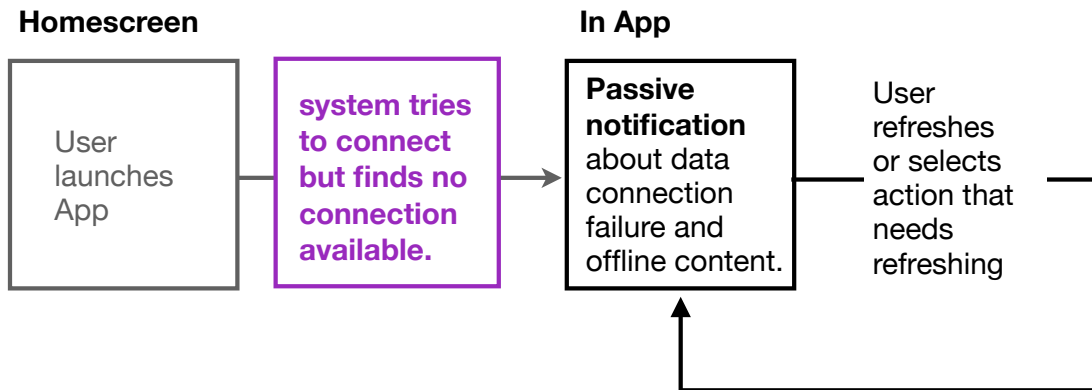
Long list - anything more makes list scrollable to reach it.

Flow for App Access Data Setting

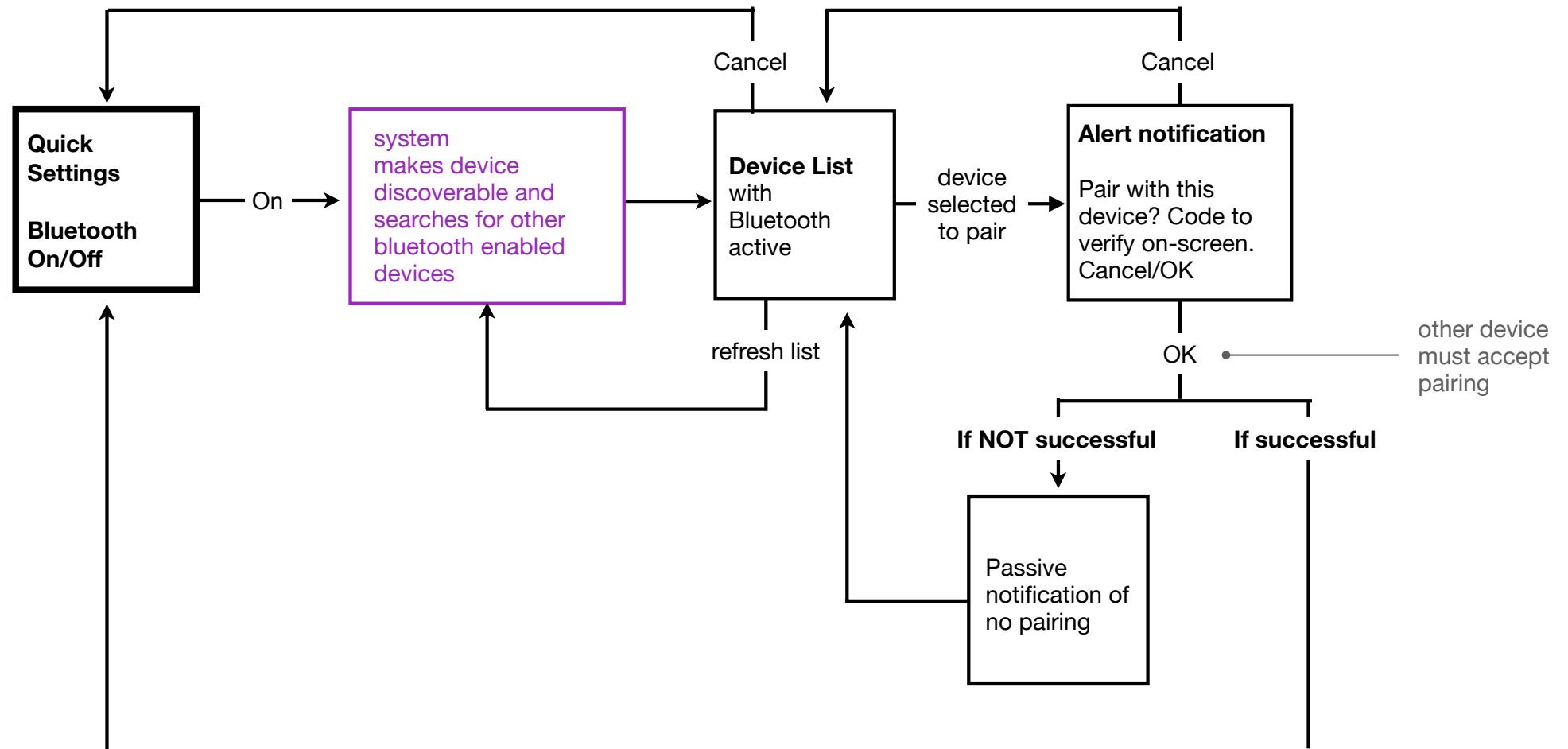
When **Data Off** and user enters App that requires data.



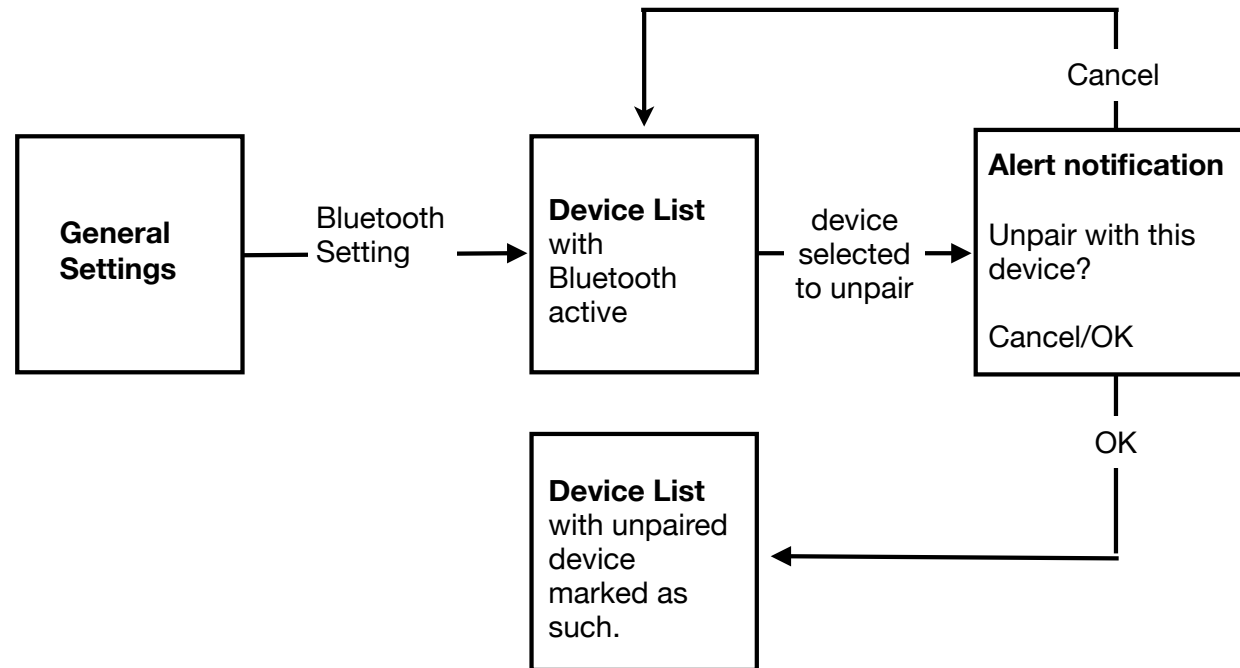
When **Data On** and user enters App with no coverage.



Flow to Pair Devices from pop-up window **Bluetooth Setting**

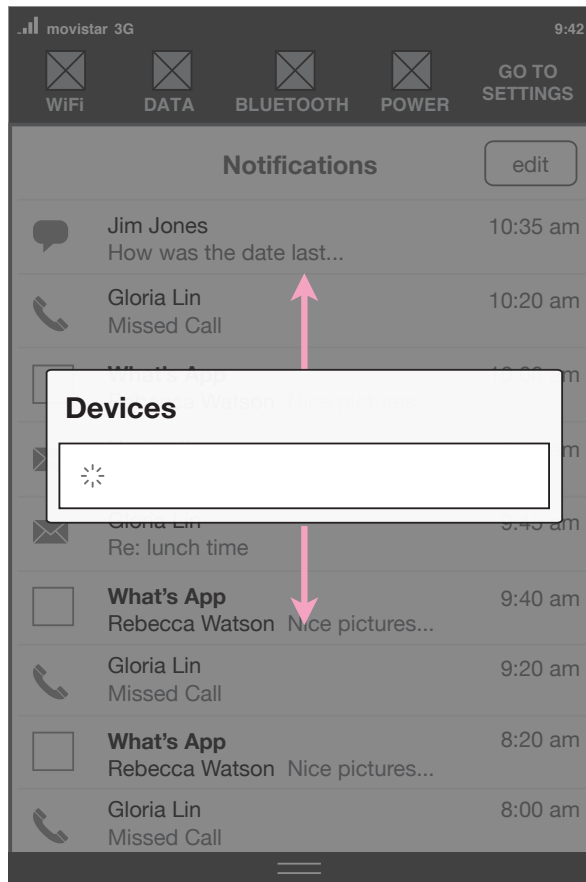


Flow to Unpair Devices from Settings Menu **Bluetooth Setting**



List Window & Connection Process Window

Bluetooth ON/OFF



System searching for available devices



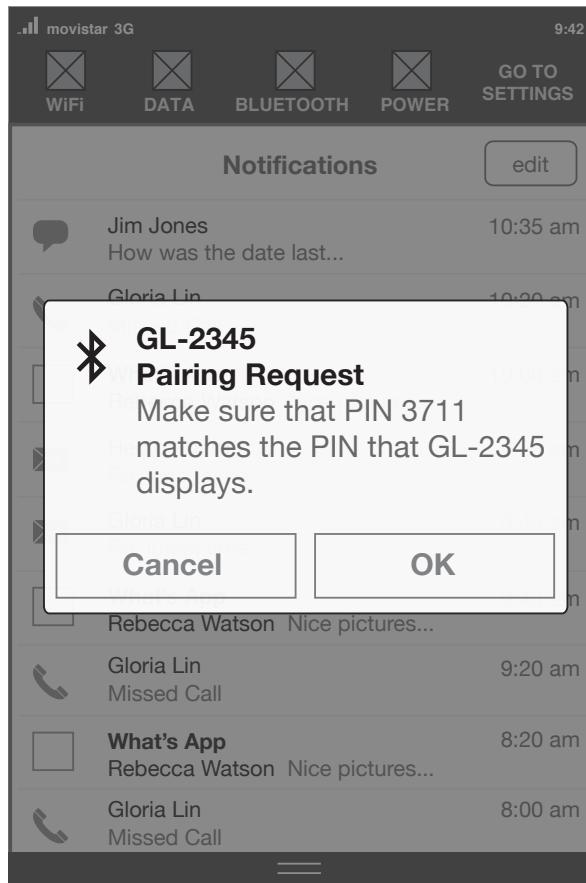
List of available devices
User selects one



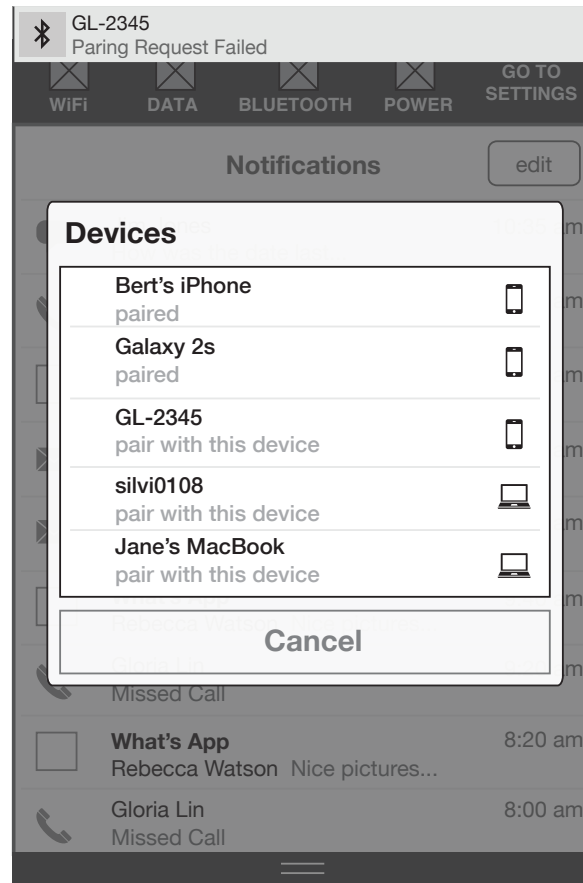
Connection processing

List Window & Connection Process Window

Bluetooth ON/OFF



Pairing Request



Passive Notification of Failed Pairing

