

Leadership

Starting with Drumbeat in Barcelona, we've become skilled at convening people and building networks.

This is our special sauce. We have a hands-on, "hacker spirit" convening style that keeps people coming back.

We now have a rich and diverse global network of over ~5,000 community leaders closely tied to Mozilla.

Evolving the networks we've already built, we will: Grow a global network of highly talented leaders who want to tackle the big issues of the web ('hills') and sustain the internet as a global public resource.

Leadership Network



Champion

CONNIE YOWELL, CEO
COLLECTIVE SHIFT

“Mozilla has been a real ally over the past five years, helping shape the new platform for learning that we’re building at Collective Shift.”

Champions play a central role in promoting Mozilla and building our influencer network.

- key supporter of Mozilla leadership and education work
- provided \$10.8M in funding while at MacArthur
- just launched LRNG platform using Mozilla’s badges tech and web literacy curriculum
- co-chairs the Badge Alliance with Mozilla



Executive

GENE KIMMELMAN, EXECUTIVE
DIRECTOR, PUBLIC KNOWLEDGE

“This is a critical moment in Internet policy in America. We need partners like Mozilla — both in Washington and at the grassroots.”

Executives lead organizations that play a key role in Mozilla networks.

- original member of Mozilla’s Public Policy Module group
- helped Mozilla establish itself as member of US internet advocacy coalition
- current host of a Mozilla Open Web fellow and advisor for overall program
- key ally on net neutrality campaign



Professional

JACKIE MOORE, FOUNDER
LEVEL UP YOUTH MAKER SPACE

“Teens are already hanging out in malls looking for something to do. Creating interactive items keeps them engaged because it empowers them to do something *they* control.”

Professionals leverage Mozilla tools, content and practices as part of their everyday work.

- transitioned from corporate IT to teach tech to young people
- turned urban shopping mall shop into a robotics lab for youth
- this work supported in part by grant from Hive Chicago
- regular participant in MozFest and Hive Chicago community



Emerging Leader

HARLO HOLMES,
THE GUARDIAN PROJECT

“Once you’re a Knight-Mozilla fellow, you’re carrying quite a brand behind you. It grants you access to people and organizations you never would have dreamed of.”

Emerging leaders are exceptional individuals who contribute to the broader Mozilla community in exchange for a unique, high impact career experience.

- put her security skills to work through Open News fellowship at the *New York Times*
- post fellowship: creating secure open source apps to protect journalists and human rights workers
- divides time between coding and teaching forward by educating others
- still active in Mozilla and Open News networks



Young Leader

DIAN INA MAHENDRA, MOZILLA
INDONESIA COMMUNITY

“There are still many people living with limited resources in Indonesia, preventing them from pursuing higher education. I see the web as an unlimited resource for everyone.”

Young leaders learn valuable skills while working on Mozilla programs, giving them valuable experience to bring into their lives and careers.

- Regional Coordinator for Mozilla Clubs
- received leadership training from Mozilla Clubs and participation teams
- pioneered ways to teach coding / web literacy in public parks without devices or wifi
- led Webmaker launch in 13 cities (community teams, localization, marketing, comms)



mozilla Festival

2010-2015

7,000 participants
from **50** countries

facillitated by

1,500
community leaders

building *relationships and networks* in...

EDUCATION

WEB LITERACY

PRIVACY

WEB OF THINGS

MOBILE

JOURNALISM

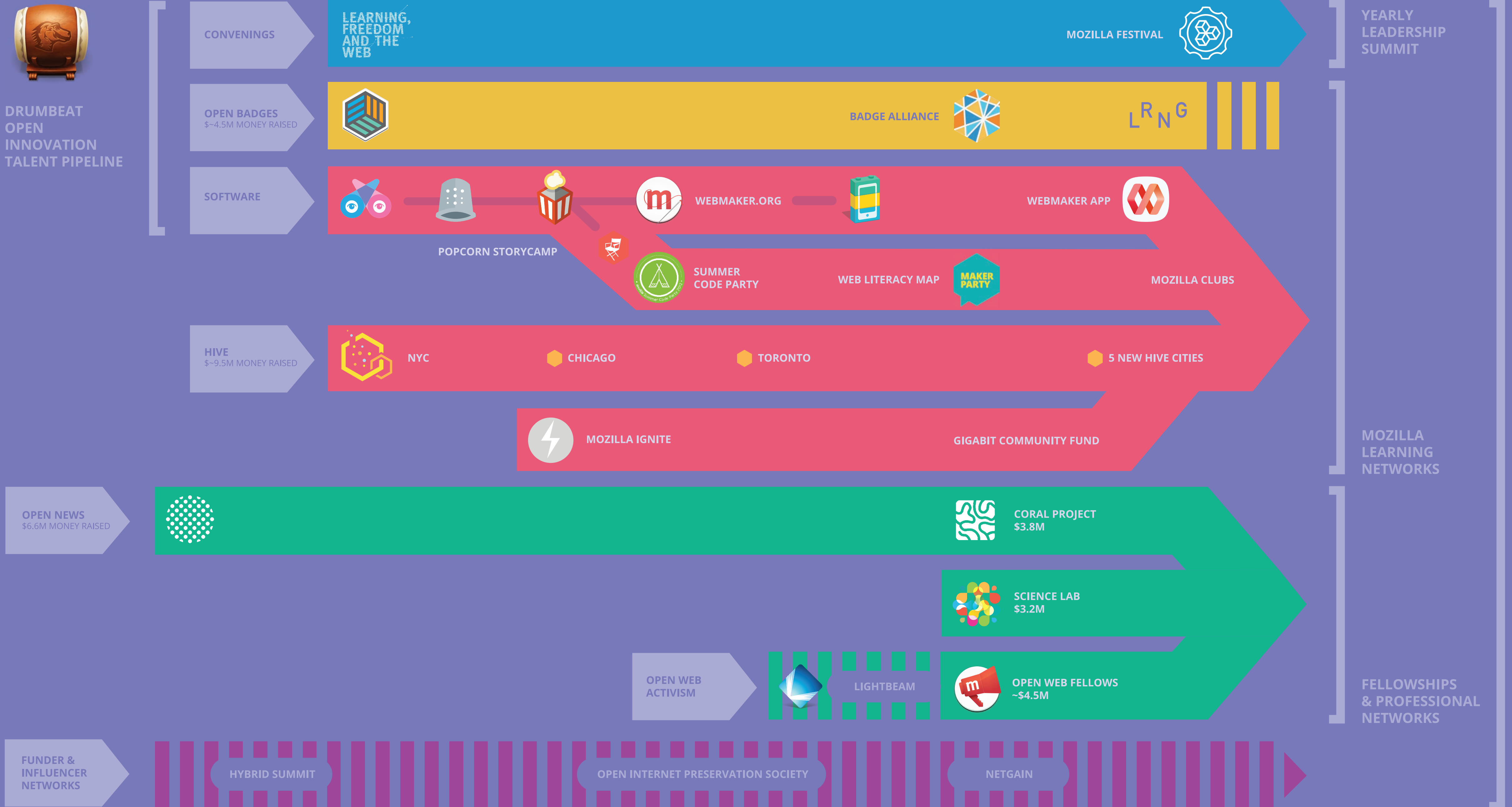
ADVOCACY

Evolution of Leadership Network

Since 2010, we've been building networks with public interest and philanthropic organizations that share our interest in open web issues.

These networks draw new people into Mozilla's mission—and enable us to cultivate leaders, catalyze new innovations, and wield influence.

What is common across these networks is an open, collaborative, networked way of working. People come through Mozilla networks and have an opportunity to be recognized for meaningful work with a supportive, global community. This "network of networks" is something we can grow and strengthen in our next 5 years.



Year	Outside Investment Spent on Building Leadership Networks
2010	\$1.1m
2011	\$2.8m
2012	\$5m
2013	\$5.4m
2014	\$5.1m
2015	\$7.8M ESTIMATED
2016+	